

ZOOMLION ALL TERRAIN CRANE ZAT2500H853



ZOOMLION

Zoomlion Heavy Industry Science & Technology Co.,Ltd.
Add: No.677, Lugu Road, Zoomlion Industrial Park, Changsha, Hunan, China, 410205
Copyright©2021 Zoomlion. All rights reserved. Reproduction and copying of any part of contents is not allowed for any purposes without Zoomlion's approval.



Product specifications are subject to change without notice and obligation. The photographs and/or drawing in this document are for illustrative purposes only. Please consult your local ZOOMLION dealer for more information.
website:en.zoomlion.com 2021.10.08

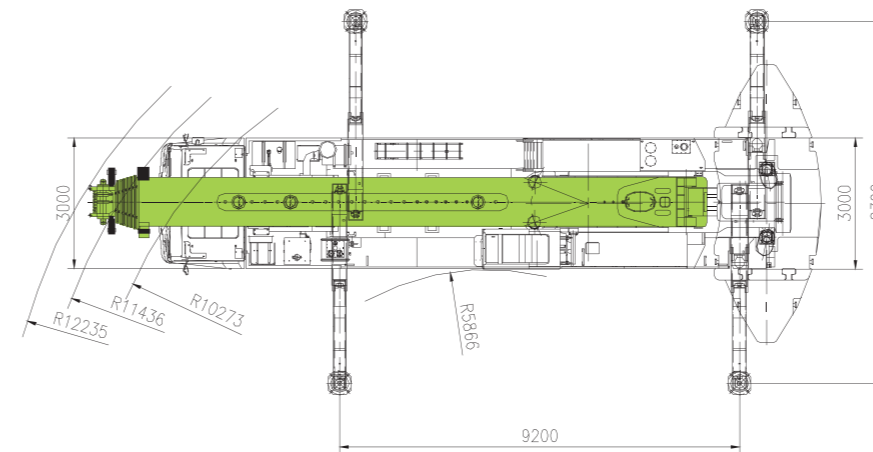
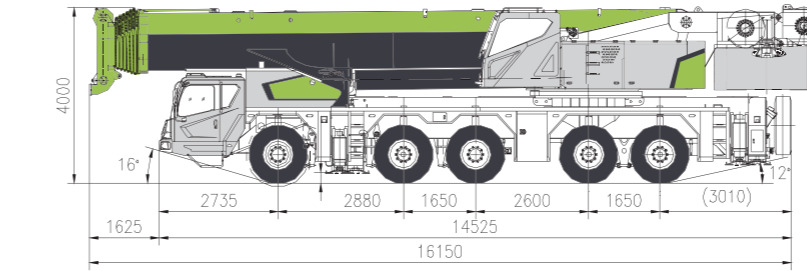
ZOOMLION

4.0
PRODUCTS

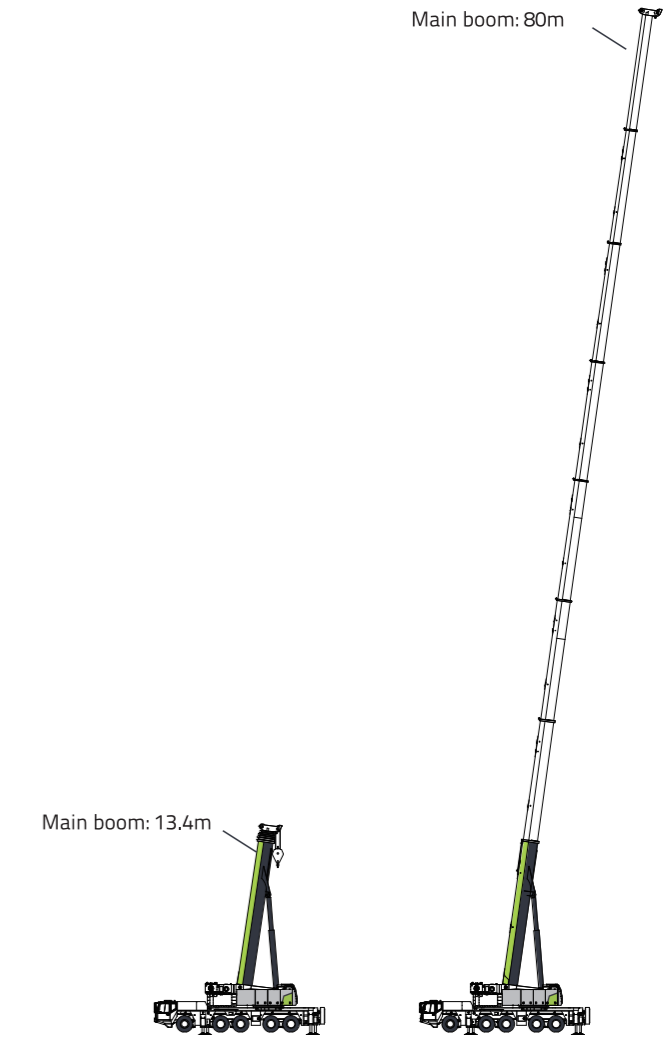
CONTENTS

CRANE DIMENSIONS	2
BOOM / JIBS COMBINATION	2-4
CRANE AND COMPONENT WEIGHTS	5
LIFTING PERFORMANCE	6-23
TECHNICAL SPECIFICATIONS	24
MAIN TECHNICAL PARAMETERS	25

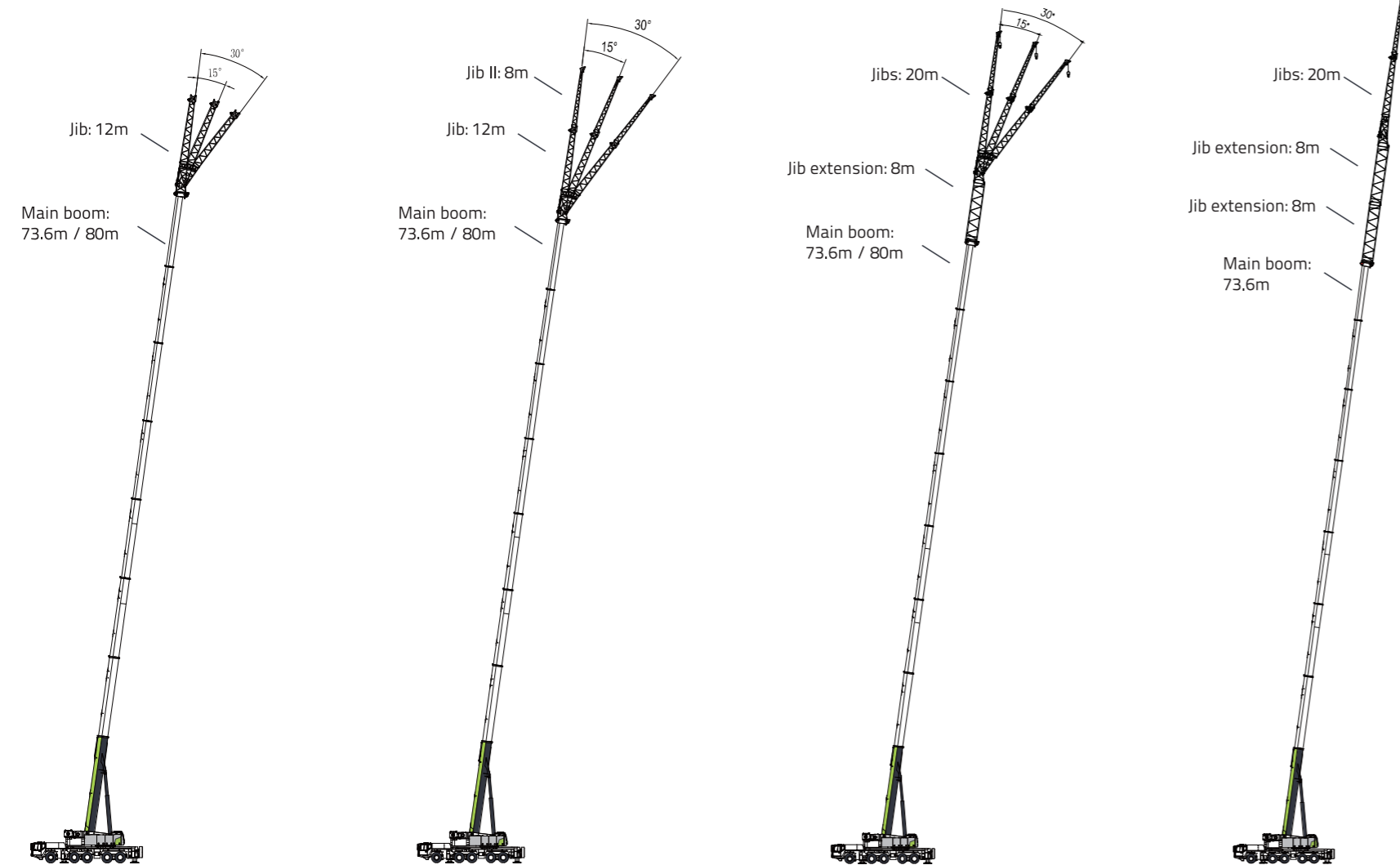
CRANE DIMENSIONS



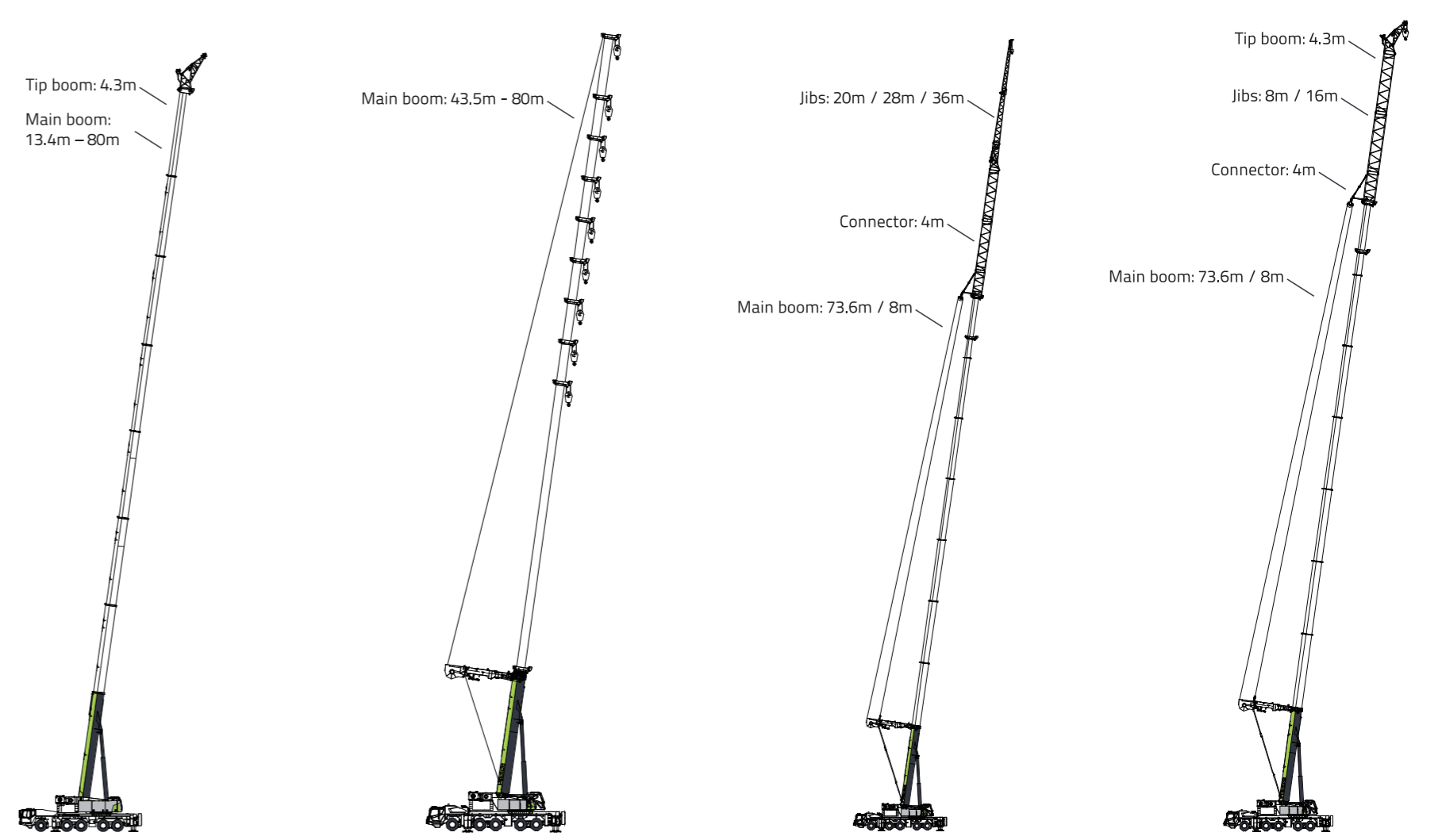
BOOM / JIBS COMBINATION



BOOM / JIBS COMBINATION



BOOM / JIBS COMBINATION



CRANE AND COMPONENT WEIGHTS

Axle	1	2	3	4	5	Total weight
T	9.45	9.45	12	12	12	54.9

Hook Detailed Description

Hook Load T	No. of Sheaves	No. of Lines	Weight Kg	Remark
220(anchor)	11	22	3410	optional
130(anchor)	7	14	2100	
80(anchor)	4	9	1700	
50(anchor/normal)	2	5	1250	optional
25	1	3	900	optional
12	0	1	500	

Working Speed

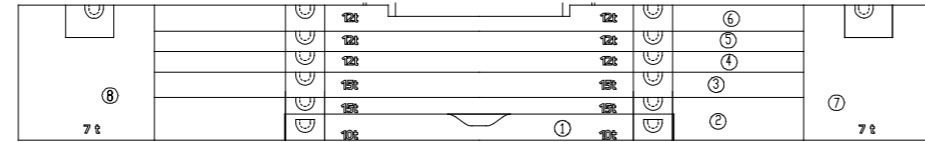
Symbol	km/h MAX.	%	Symbol
445/95R25	80	48	12 / R2

Drive	Operation Speed	Rope diameter/length	Max. single line pull
1	125m/min	Φ 24mm/380m	12500Kg
2	70m/min	Φ 24mm/250m	12500Kg
360	0~1.5r/min		
4	65/130s		
5	750/750s		

Counterweight

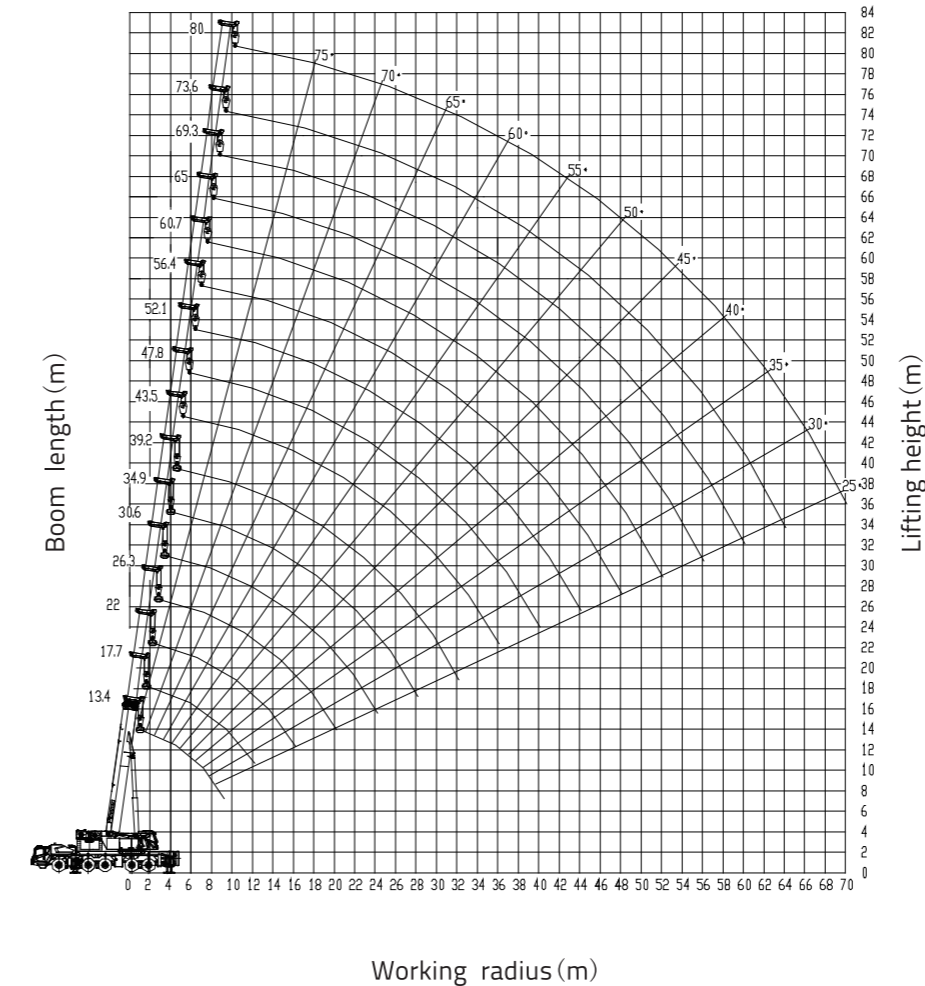
Counterweight	Size(L*W*H) mm	Weight T / piece	10T	25T	40T	52T	64T	76	90T
①	2980*2450*1060	10	1	1	1	1	1	1	1
②	5000*2450*370	15		1	1	1	1	1	1
③	5000*2450*235	15			1	1	1	1	1
④	5000*2450*198	12				1	2	2	2
⑤	5000*2450*200	12						1	1
⑥	1310*1260*1040	7						1	1
⑦	1310*1260*1040	7							1

Note: 90T counterweight combination is an optional.



LIFTING PERFORMANCE

Main Boom



Unit: t

Working radius (m)	Outriggers completely extended 8.3 m, with 90 t counterweight, over full range														
	Main boom length (m)														
	13.4*	17.7	17.7	17.7	17.7	17.7	17.7*	22.0	22.0	22.0	22.0	22.0	22.0	22.0*	
3.0	250*	53.0	90.0	100.0	110.0	125.0	150*	41.7	60.0	89.5	100.0	110.0	125.0	140*	
3.5	160*	51.0	90.0	100.0	110.0	125.0	150*	39.4	57.5	83.5	100.0	110.0	125.0	140*	
4.0	150*	49.0	90.0	100.0	110.0	125.0	145*	37.2	55.1	78.0	100.0	110.0	125.0	135*	
4.5	145*	47.0	90.0	100.0	110.0	125.0	135*	35.2	53.2	73.5	97.0	106.0	120.0	128.0	
5.0	135*	45.5	87.0	95.0	110.0	125.0	128.0	33.4	51.2	69.2	93.0	102.0	120.0	122.0	
5.5	127.0	44.0	84.0	90.0	110.0	119.0	121.0	31.8	49.4	65.4	88.5	97.0	115.0	116.0	
6.0	120.0	42.7	80.0	85.3	110.0	113.0	115.0	30.3	47.7	62.0	84.0	92.0	110.0	110.0	
7.0	107.0	39.7	72.0	76.8	100.0	102.0	103.0	27.8	44.5	55.9	76.0	83.0	99.0	99.0	
8.0	94.5	37.2	65.9	70.2	91.0	92.0	92.0	25.6	41.9	51.1	69.5	76.0	89.0	89.0	
9.0	82.5	35.2	60.6	64.5	83.0	83.0	83.0	23.8	39.6	47.0	64.0	70.0	82.0	82.0	
10.0		33.4	56.1	59.7	75.0	75.0	75.0	22.2	37.6	43.5	59.3	65.0	74.0	74.0	
11.0		31.8	52.3	55.6	68.0	68.0	68.0	21.0	35.9	40.6	55.3	60.5	67.0	67.0	
12.0		30.5	49.0	52.0	62.0	61.5	60.5	19.8	34.3	38.0	51.8	56.5	60.0	60.0	
14.0								17.7	31.5	33.6	45.8	50.0	50.0	50.0	
16.0								16.1	28.5	30.1	41.0	42.5	42.5	42.5	
Reeving	14	14						14							
Hook	130t														
Telescoping mode	I	1	1	1	1	1	1	1	1	1	1	1	1	2	
	II	1	1	1	1	1	1	2	1	1	1	1	2	2	
	III	1	1	1	1	1	2	1	1	1	1	2	2	1	
	IV	1	1	1	1	2	1	1	1	1	2	2	1	1	
	V	1	1	1	2	1	1	1	1	1	2	2	1	1	
	VI	1	1	2	1	1	1	1	1	2	2	1	1	1	
	VII	1	2	1	1	1	1	1	3	2	1	1	1	1	

LIFTING PERFORMANCE

Main Boom

Unit: t

Working radius (m)	Outriggers completely extended 8.3 m, with 90 t counterweight, over full range															
	Main boom length (m)															
	26.3	26.3	26.3	26.3	26.3	26.3	26.3*	30.6	30.6	30.6	30.6	30.6	30.6	30.6*		
3.0	41.5	51.8	62.5	90.0	100.0	110.0	125.0									
3.5	38.9	48.5	60.5	86.0	100.0	110.0	125.0									
4.0	36.7	45.7	58.5	82.0	100.0	110.0	125.0	38.1	40.8	41.0	60.0	90.0	100.0	110.0		
4.5	34.7	43.1	56.6	78.0	94.5	110.0	120.0	36.1	38.7	38.9	58.5	86.0	100.0	110.0		
5.0	33.0	40.9	54.9	75.0	90.0	110.0	115.0	34.1	36.6	36.7	56.8	82.0	100.0	110.0		
5.5	31.3	38.8	53.3	71.7	85.1	108.0	110.0	32.3	34.7	34.8	55.1	78.0	96.0	105.0		
6.0	29.9	37.0	51.8	68.4	80.7	103.0	105.0	30.7	33.0	33.1	53.6	74.0	91.5	100.0		
7.0	27.3	33.6	48.8	62.5	72.9	94.0	94.0	27.9	30.1	30.1	50.8	66.8	83.5	91.0		
8.0	25.1	30.7	44.8	57.5	66.7	86.0	86.0	25.5	27.6	27.6	48.1	61.0	76.5	84.0		
9.0	23.2	28.2	41.1	53.4	61.4	79.0	79.0	23.6	25.5	25.4	45.0	56.0	70.5	78.0		
10.0	21.6	26.1	38.0	49.7	56.8	73.0	73.0	22.0	23.7	23.6	42.0	52.0	65.5	72.0		
11.0	20.2	24.3	35.3	46.5	52.8	66.0	66.0	20.5	22.1	22.0	39.4	48.5	61.0	65.0		
12.0	19.0	22.7	33.0	44.0	49.4	60.0	60.0	19.2	20.7	20.6	37.2	45.5	57.0	59.2		
14.0	16.9	20.1	29.1	39.0	43.5	51.0	51.0	17.0	18.3	18.2	32.9	40.0	50.0	50.3		
16.0	15.2	18.0	25.9	35.1	38.7	44.0	44.0	15.3	16.4	16.2	29.5	35.6	44.3	43.7		
18.0	13.9	16.3	23.5	32.0	35.1	38.4	38.0	13.8	14.8	14.6	26.8	32.1	39.0	38.4		
20.0	12.8	14.9	21.5	29.3	31.8	33.5	32.0	12.6	13.5	13.3	24.5	29.3	34.5	33.2		
22.0								11.6	12.4	12.2	22.6	26.8	29.9	28.4		
24.0								10.7	11.4	11.2	21.0	24.5	26.0	24.5		
Reeving	11						10									
Hook	130 t						10									
Telescoping mode	I	1	1	1	1	1	1	2	1	1	1	1	1	1	2	
	II	1	1	1	1	1	2	2	1	1	1	1	1	1	2	2
	III	1	1	1	1	2	2	2	1	1	1	1	2	2	2	2
	IV	1	1	1	2	2	2	1	1	1	1	2	2	2	2	2
	V	1	1	2	2	2	1	1	1	1	2	3	2	2	2	1
	VI	2	3	2	2	1	1	1	1	3	3	2	2	2	1	1
	VII	3	2	2	1	1	1	1	3	2	2	2	1	1	1	1

Unit: t

Working radius (m)	Outriggers completely extended 8.3 m, with 90 t counterweight, over full range															
	Main boom length (m)															
	34.9	34.9	34.9	34.9	34.9	34.9	34.9	34.9	39.2	39.2	39.2	39.2	39.2	39.2		
5.0	33.3	33.3	37.3	45.2	59.0	89.0	100.0									
5.5	31.7	31.7	35.6	43.2	57.8	86.0	97.0									
6.0	30.4	30.3	34.0	41.2	56.5	83.0	94.0	27.5	30.5	35.0	36.7	41.4	58.5	90.0		
7.0	27.7	27.6	31.1	37.7	54.0	76.0	88.0	25.0	27.8	32.2	33.6	37.8	56.0	84.0		
8.0	25.4	25.3	28.5	34.5	51.5	70.0	82.0	23.0	25.6	29.8	30.9	34.8	54.0	79.0		
9.0	23.6	23.4	26.4	32.0	49.5	65.0	76.0	21.5	23.9	28.0	28.8	32.4	52.5	73.5		
10.0	21.9	21.7	24.5	29.7	47.0	60.5	70.0	19.9	22.1	26.0	26.7	30.0	50.5	68.0		
11.0	20.4	20.2	22.9	27.7	44.2	56.5	64.0	18.6	20.7	24.5	25.0	28.1	48.5	63.0		
12.0	19.1	18.8	21.3	25.8	41.5	53.0	58.5	17.5	19.4	23.1	23.4	26.3	46.0	58.0		
14.0	16.9	16.6	18.8	22.7	36.8	46.6	50.0	15.4	17.1	20.5	20.6	23.1	41.2	50.0		
16.0	15.0	14.7	16.7	20.2	33.1	41.6	43.5	13.7	15.2	18.3	18.3	20.5	37.5	43.6		
18.0	13.5	13.2	15.0	18.1	30.1	37.4	38.0	12.3	13.6	16.5	16.4	18.4	34.3	38.6		
20.0	12.3	11.9	13.6	16.5	27.6	33.5	33.5	11.1	12.3	14.9	14.8	16.6	31.5	34.5		
22.0	11.2	10.9	12.4	15.0	25.3	30.3	29.5	10.1	11.2	13.6	13.5	15.1	28.9	30.5		
24.0	10.2	9.9	11.3	13.7	23.3	27.5	25.6	9.2	10.2	12.4	12.3	13.8	26.3	26.8		
26.0	9.4	9.1	10.4	12.6	21.6	24.5	22.4	8.5	9.4	11.4	11.3	12.6	24.1	23.6		
28.0	8.7	8.4	9.6	11.7	20.1	21.5	19.7	7.8	8.7	10.5	10.4	11.6	22.1	20.9		
30.0								7.2	8.0	9.7	9.6	10.7	19.9	18.6		
32.0								6.7	7.4	9.0	8.9	9.9	17.9	16.6		
Reeving	9						8									
Hook	130 t						10									
Telescoping mode	I	1	1	1	1	1	1	2	1	1	1	1	1	1	2	
	II	1	1	1	1	1	2	2	1	1	1	1	1	1	2	2
	III	1	1	1	1	2	2	2	1	1	1	2	3	2	2	2
	IV	1	1	2	3	2	2	2	1	2	3	3	2	2	2	2
	V	2	3	3	2	2	2	2	3	3	3	2	2	2	2	2
	VI	3	3	2	2	2	2	1	3	3	2	2	2	2	2	2
	VII	3	2	2	2	2	1	1	3	2	2	2	2	2	2	1

LIFTING PERFORMANCE

Main Boom

Unit: t

Working radius (m)	Outriggers completely extended 8.3 m, with 90 t counterweight, over full range															
	Main boom length (m)															
	43.5	43.5	43.5	43.5	43.5	43.5	43.5*	47.8	47.8	47.8	47.8	47.8	47.8	47.8*		
7.0	25.7	28.8	30.8	34.8	40.6	51.0	62.5									
8.0	24.0	27.0	28.7	32.4	37.9	47.5	59.9	24.9	27.0	30.0	35.0	40.5	50.0	59.5		
9.0	22.5	25.4	26.8	30.2	35.5	44.5	57.5	23.2	25.0	27.9	32.5	37.8	47.0	56.5		
10.0	20.9	23.7	24.9	28.1	33.2	41.5	55.3	21.7	23.2	26.0	30.3	35.6	44.0	53.0		
11.0	19.5	22.3	23.3	26.2	31.2	39.0	53.2	20.4	21.7	24.4	28.4	33.5	41.5	49.8		
12.0	18.3	21.0	21.8	24.5	29.3	36.5	51.2	19.2	20.3	22.9	26.7	31.6	39.2	47.0		
14.0	16.2	18.6	19.2	21.6	26.0	32.5	46.2	17.1	18.0	20.3	23.7	28.2	35.0	41.8		
16.0	14.4	16.6	17.0	19.1	23.2	28.9	42.0	15.3	16.0	18.0	21.2	25.4	31.5	37.5		
18.0	12.9	15.0	15.2	17.0	20.8	25.9	38.4	13.9	14.4	16.2	19.2	23.3	28.7	33.8		
20.0	11.6	13.6	13.7	15.3	18.9	23.4	34.5	12.7	13.0	14.6	17.4	21.3	26.3	30.8		
22.0	10.6	12.4	12.4	13.8	17.2	21.4	31.3	11.6	11.8	13.2	15.8	19.5	24.0	27.9		
24.0	9.7	11.4	11.3	12.6	15.8	19.6	27.5	10.7	10.8	12.0	14.4	17.9	22.0	25.4		
26.0	8.9	10.5	10.3	11.5	14.5	17.9	24.5	9.8	9.8	10.9	13.2	16.5	20.3	23.2		
28.0	8.2	9.7	9.5	10.5	13.4	16.5	21.7	9.1	9.0	10.0	12.1	15.3	18.7	21.4		
30.0	7.6	9.0	8.7	9.6	12.4	15.3	19.4	8.4	8.3	9.2	11.2	14.2	17.3	19.2		
32.0	7.0	8.3	8.0	8.9	11.5	14.2	17.6	7.8	7.6	8.5	10.4	13.2	16.0	17.1		
34.0	6.5	7.6	7.4	8.2	10.7	13.2	15.9	7.2	7.0	7.8	9.7	12.2	14.9	15.3		
36.0	6.0	7.1	6.8	7.6	10.0	12.4	14.4	6.7	6.5	7.2	9.0	11.3	13.9	13.7		
38.0								6.2	6.0	6.6	8.4	10.5	12.9	12.3		
40.0								5.8	5.6	6.1	7.8	9.8	11.5	11.1		
Reeving	6						5									
Hook	80 t						80 t									
Telescoping mode	I	1	1	1	1	1	1	2	1	1	1	1	1	2	3	
	II	1	1	1	1	2	3	2	1	1	1	2	3	3	2	
	III	1	1	2	3	3	2	2	1	2	3	3	3	2	2	
	IV	2	3	3	3	2	2	2	3	3	3	3	2	2	2	
	V	3	3	3	2	2	2	2	3	3	3	2	2	2	2	
	VI	3	3	2	2	2	2	2	3	3	2	2	2	2	2	
	VII	3	2	2	2	2	2	2	3	2	2	2	2	2	2	

Unit: t

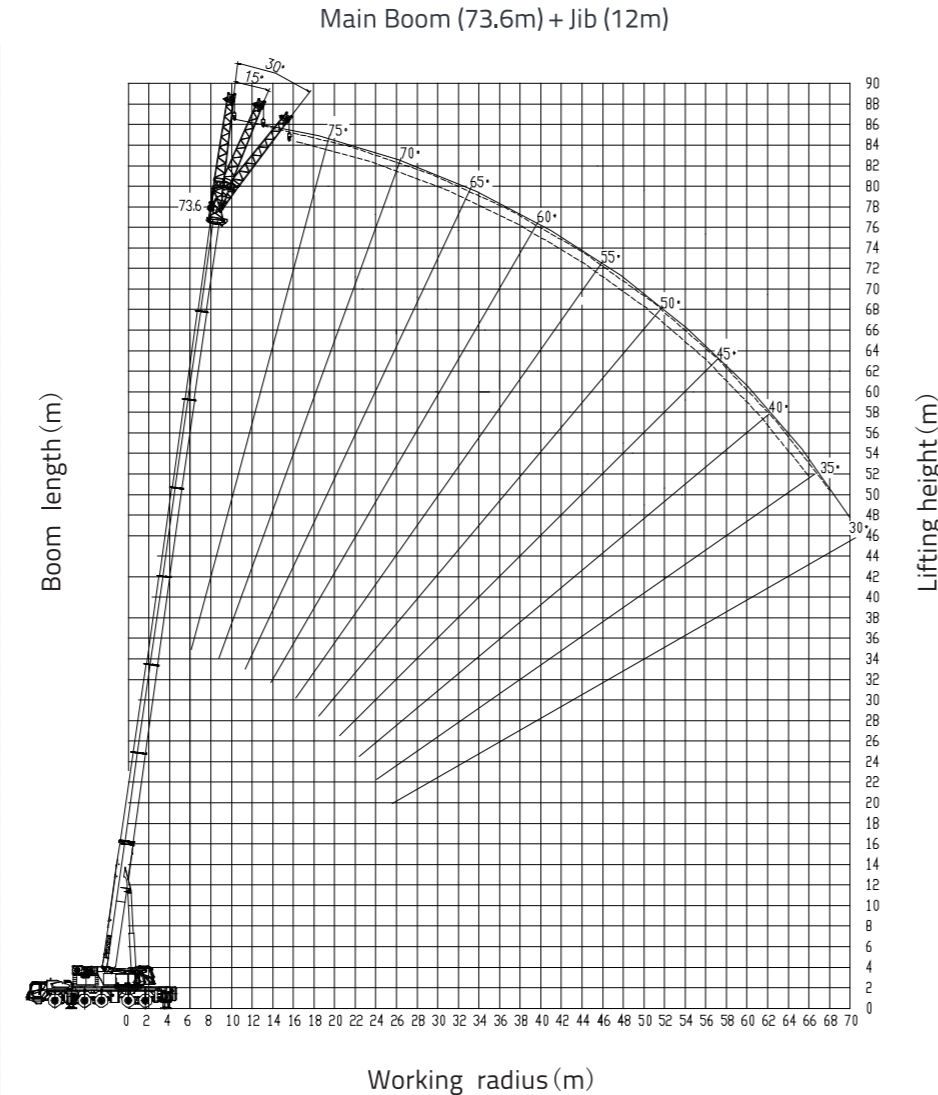
Working radius (m)	Outriggers completely extended 8.3 m, with 90 t counterweight, over full range													
	Main boom length (m)													
	52.1	52.1	52.1	52.1	52.1	52.1*	56.4	56.4	56.4	56.4	56.4	56.4	56.4*	56.4*
9.0	23.7	26.0	30.0	35.1	40.3	48.0								
10.0	22.1	24.3	28.2	32.8	38.0	45.5	21.8	24.7	28.1	32.3	36.0			
11.0	20.7	22.8	26.5	30.9	35.8	43.0	20.9	23.8	27.2	31.3	35.0			
12.0	19.4	21.5	25.1	29.3	34.1	41.0	19.9	22.6	26.0	29.9	33.6			
14.0	17.2	19.1	22.3	26.1	30.7	37.0	17.8	20.3	23.4	27.0	30.7			
16.0	15.3	17.1	20.0	23.5	28.0	34.0	16.1	18.4	21.4	24.7	28.3			
18.0	13.8	15.5	18.1	21.4	25.6	31.0	14.8	16.9	19.6	22.8	26.3			
20.0	12.5	14.0	16.3	19.5	23.									

LIFTING PERFORMANCE

Main Boom

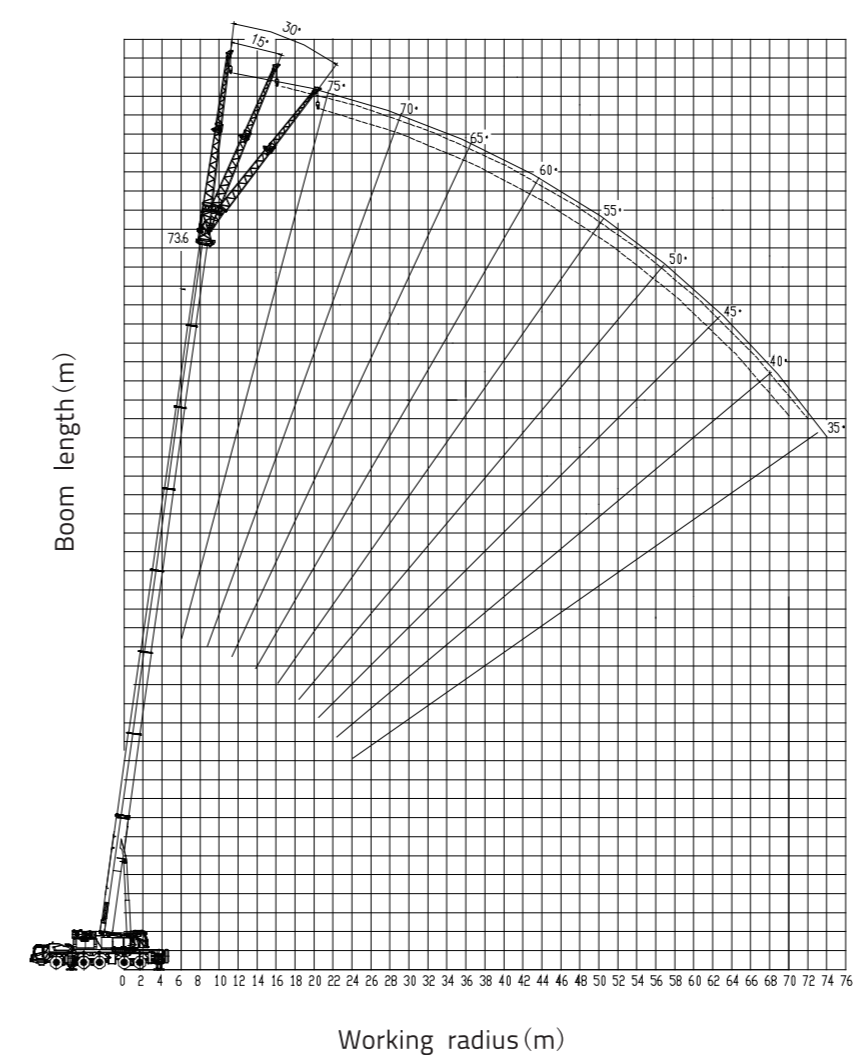
Unit: t

Working radius (m)	Outriggers completely extended 8.3 m, with 90 t counterweight, over full range										
	Main boom length (m)										
	60.7	60.7	60.7	60.7*	65.0	65.0	65.0*	69.3	69.3*	73.6*	80.0*
11.0	20.3	22.9	26.0	29.0							
12.0	19.6	22.2	25.2	28.2	19.3	21.6	24.0				
14.0	18.1	20.5	23.5	26.4	18.3	20.6	22.9	17.6	19.2		
16.0	16.7	19.1	21.9	24.6	17.2	19.4	21.7	16.8	18.4	15.0	
18.0	15.5	17.7	20.4	23.0	16.1	18.2	20.4	16.0	17.6	14.6	11.0
20.0	14.4	16.5	19.0	21.5	15.1	17.2	19.3	15.2	16.8	14.2	10.8
22.0	13.4	15.4	17.6	20.1	14.0	16.0	17.9	14.4	16.0	13.7	10.6
24.0	12.4	14.3	16.4	18.8	13.0	14.8	16.6	13.6	15.2	13.1	10.4
26.0	11.5	13.3	15.3	17.6	12.1	13.9	15.6	12.9	14.4	12.5	10.2
28.0	10.7	12.3	14.3	16.5	11.4	13.1	14.7	12.2	13.6	11.9	10.0
30.0	9.9	11.4	13.3	15.5	10.8	12.3	13.9	11.5	12.8	11.4	9.7
32.0	9.2	10.6	12.4	14.5	10.2	11.6	13.1	10.8	12.1	10.9	9.3
34.0	8.6	9.9	11.6	13.5	9.6	10.9	12.4	10.2	11.4	10.4	8.9
36.0	8.0	9.2	10.8	12.5	9.0	10.2	11.7	9.7	10.8	9.9	8.5
38.0	7.4	8.6	10.1	11.6	8.4	9.6	10.9	9.2	10.2	9.4	8.2
40.0	6.9	8.0	9.5	10.7	7.8	9.0	10.2	8.7	9.6	9.0	7.9
42.0	6.4	7.5	8.9	9.9	7.3	8.4	9.5	8.2	9.1	8.6	7.6
44.0	6.0	7.0	8.3	9.2	6.8	7.9	8.8	7.7	8.6	8.2	7.3
46.0	5.6	6.5	7.8	8.6	6.4	7.4	8.2	7.2	8.0	7.8	7.0
48.0	5.2	6.1	7.3	8.0	6.0	7.0	7.6	6.8	7.5	7.3	6.7
50.0	4.8	5.7	6.8	7.1	5.6	6.6	7.1	6.4	7.0	6.9	6.4
52.0	4.5	5.4	6.4	6.4	5.3	6.1	6.6	6.0	6.5	6.5	6.1
54.0					5.0	5.7	6.1	5.7	6.0	6.1	5.8
56.0					4.7	5.3	5.5	5.3	5.6	5.7	5.4
58.0								5.0	5.2	5.3	5.0
60.0								4.7	4.8	4.9	4.6
62.0										4.6	4.3
64.0										4.3	4.0
66.0										4.0	3.7
68.0											3.4
70.0											3.1
Reeving	3			3			2		2		2
Hook	80 t			25 t			25 t		25 t		25 t
Telescoping mode	I	1	1	2	3	1	2	3	2	3	4
	II	2	3	3	3	3	3	3	3	3	4
	III	3	3	3	3	3	3	3	3	3	4
	IV	3	3	3	3	3	3	3	3	3	4
	V	3	3	3	2	3	3	3	3	3	4
	VI	3	3	2	2	3	3	2	3	3	4
	VII	3	2	2	2	3	2	2	3	2	4

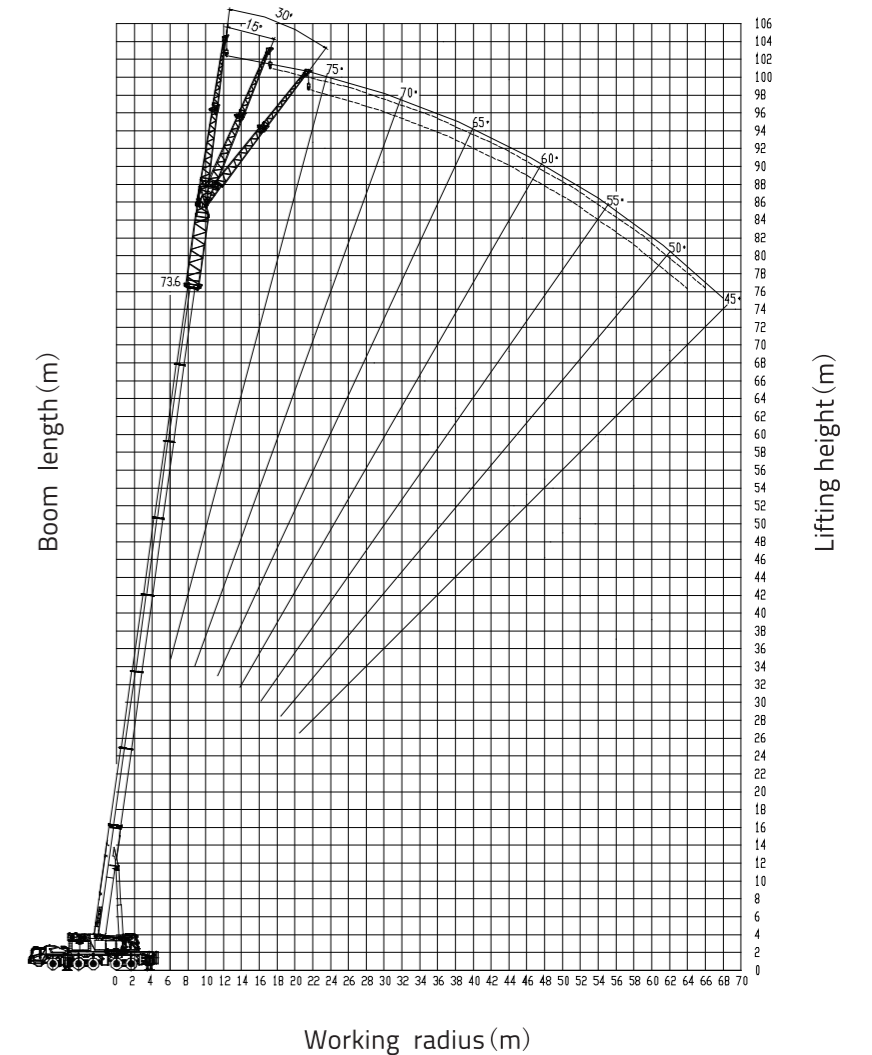


LIFTING PERFORMANCE

Main Boom (73.6m) + Jib (20m)

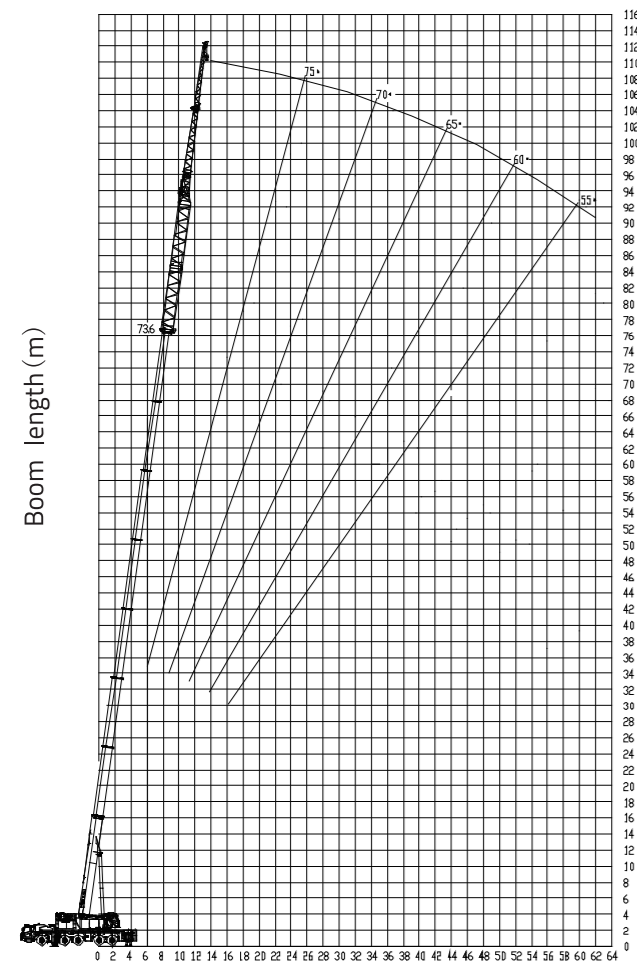


Main Boom (73.6m) + Jib (28m)



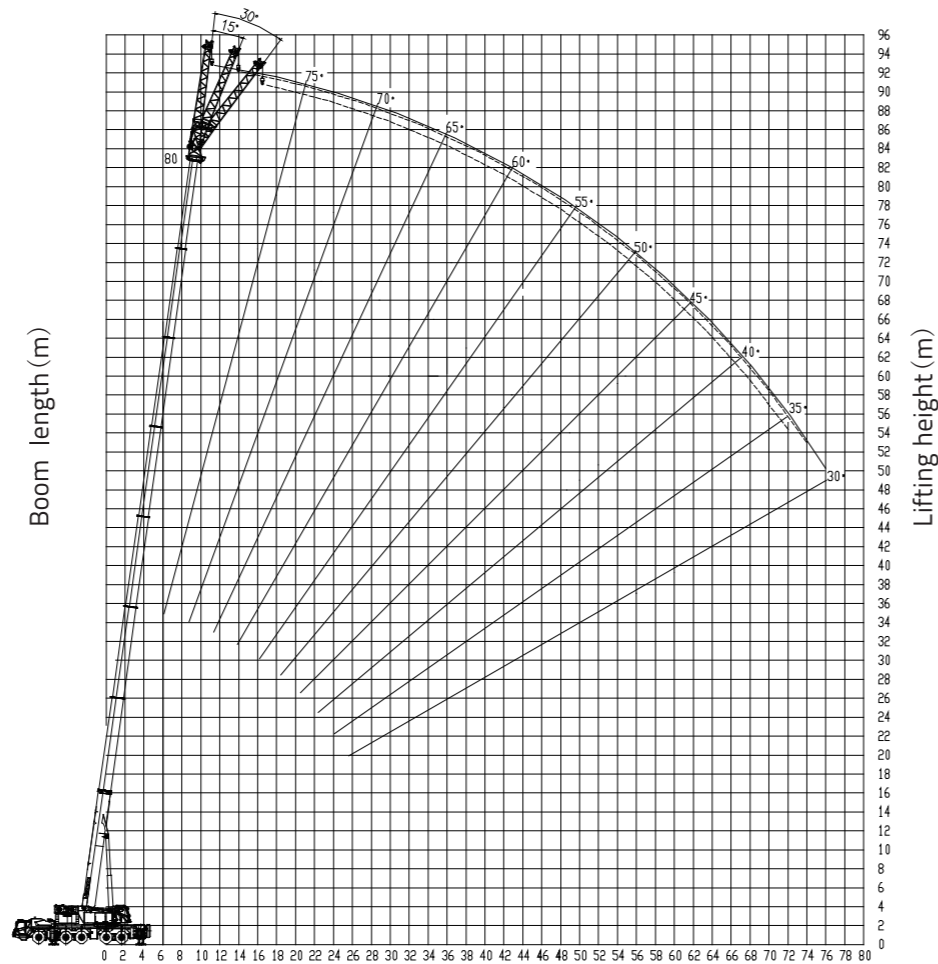
LIFTING PERFORMANCE

Main Boom (73.6m) + Jib (36m)



Working radius (m)

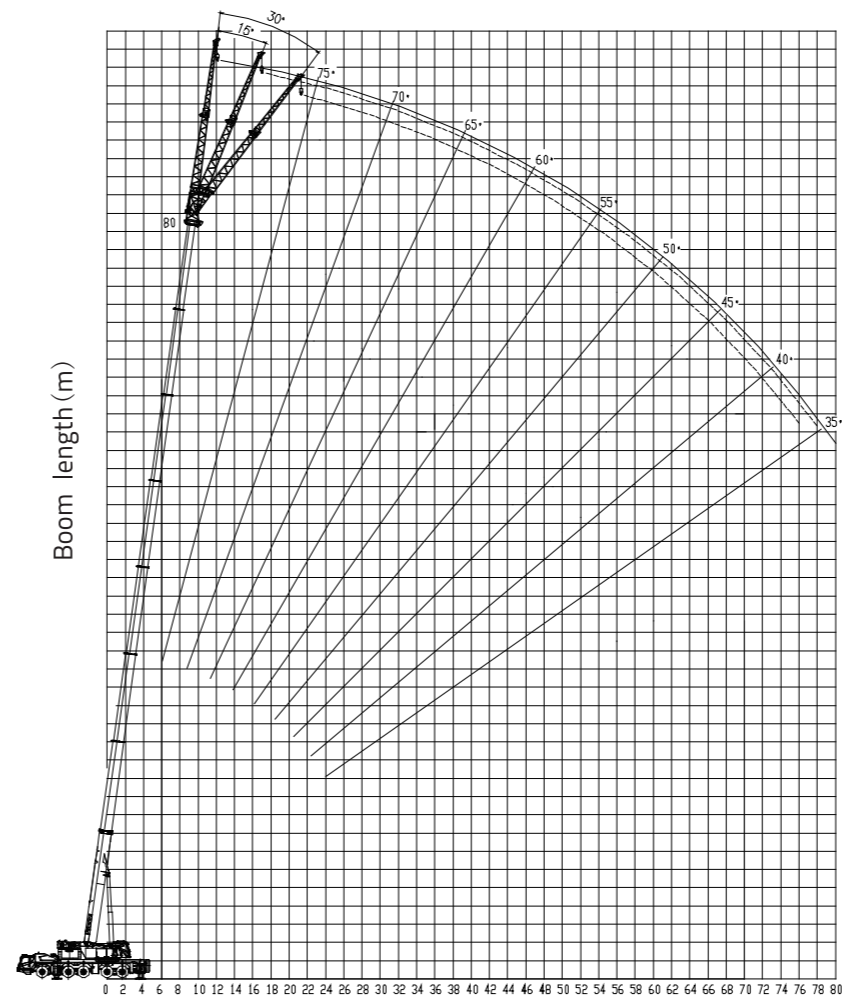
Main Boom (80m) + Jib (12m)



Working radius (m)

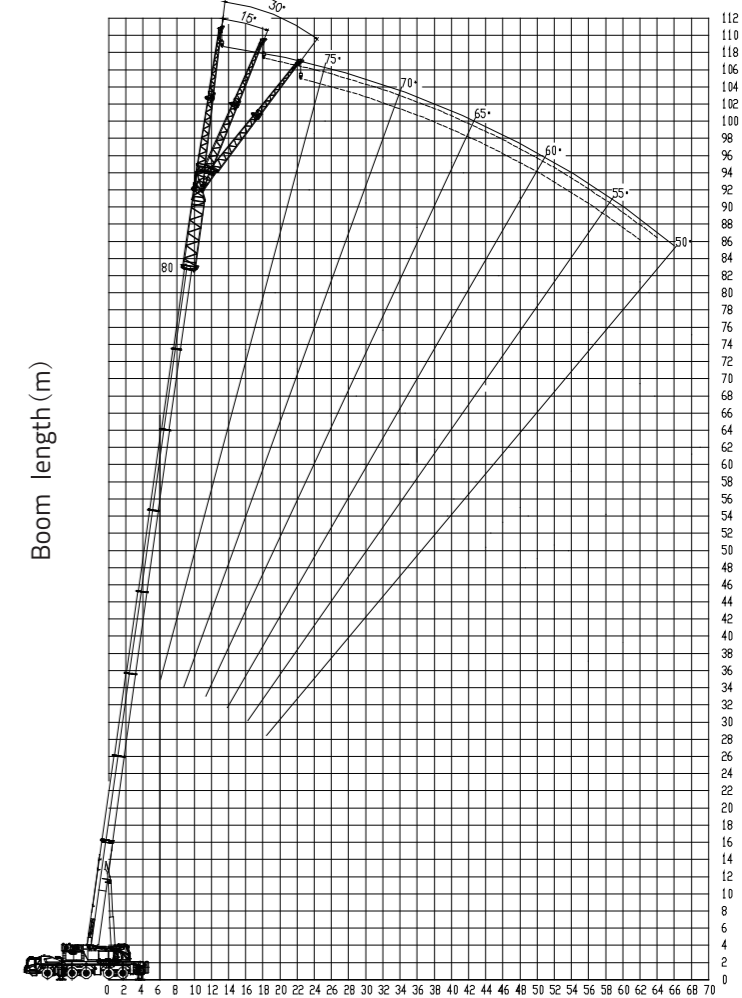
LIFTING PERFORMANCE

Main Boom (80m) + Jib (20m)



Working radius (m)

Main Boom (80m) + Jib (28m)



Working radius (m)

LIFTING PERFORMANCE

Main Boom + Jib

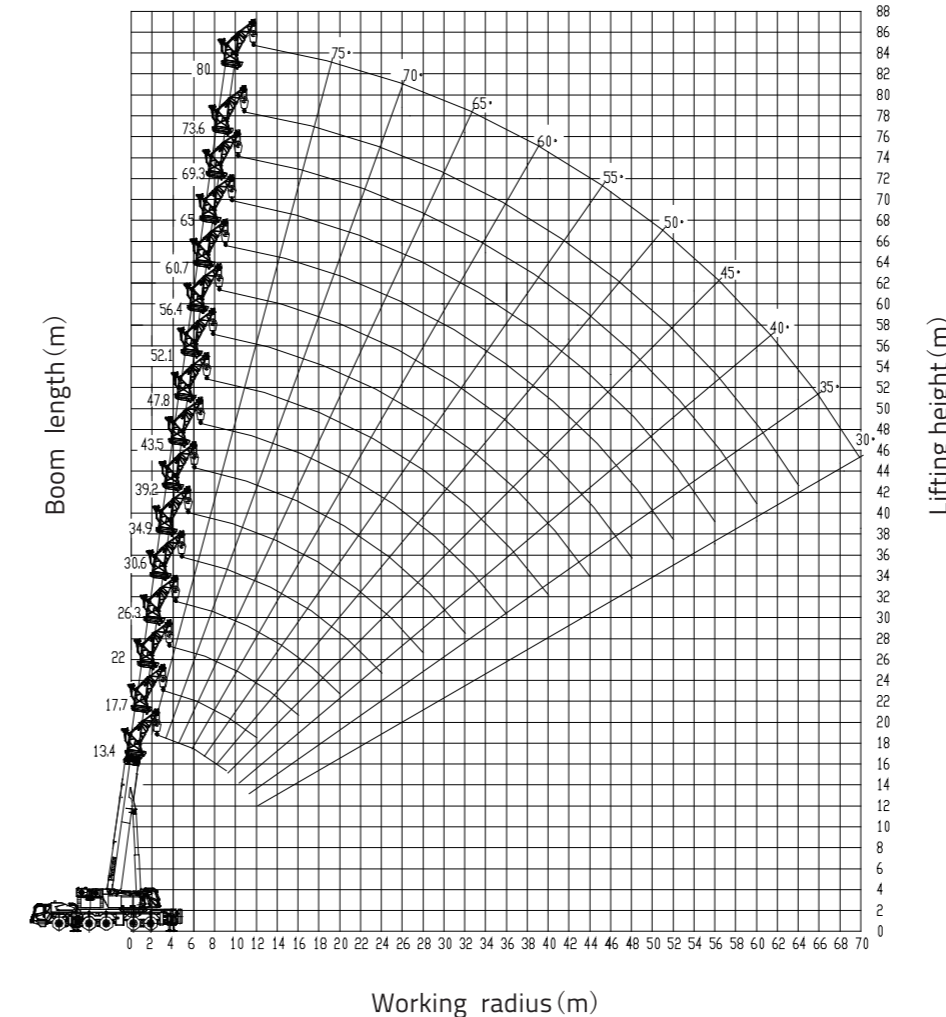
Unit: t

Working radius (m)	Outriggers completely extended 8.3 m, with 90 t counterweight, over full range																		
	Main boom (m) + Jib (m)																		
	73.6			80.0			73.6			80.0			73.6			80.0			73.6
	0°	15°	30°	0°	15°	30°	0°	15°	30°	0°	15°	30°	0°	15°	30°	0°	15°	30°	0°
20.0	7.9																		
22.0	7.8	6.6							5.0										
24.0	7.7	6.4	5.3	5.8					4.9	3.9									
26.0	7.6	6.2	5.2	5.8	5.0				4.8	3.8					3.5				
28.0	7.3	6.0	5.1	5.8	4.9	4.3			4.7	3.7	2.9			3.5	3.0				
30.0	7.0	5.8	5.0	5.8	4.8	4.2			4.6	3.6	2.9			3.5	2.9				
32.0	6.8	5.6	4.9	5.8	4.7	4.1			4.5	3.5	2.8			3.5	2.9	2.4			3.0
34.0	6.6	5.4	4.8	5.6	4.6	4.0			4.3	3.4	2.8			3.5	2.8	2.4			3.0
36.0	6.4	5.2	4.7	5.4	4.5	3.9			4.1	3.3	2.7			3.5	2.8	2.3			3.0
38.0	6.2	5.1	4.6	5.2	4.4	3.9			3.9	3.2	2.7			3.5	2.7	2.3			2.9
40.0	6.0	5.0	4.5	5.0	4.3	3.8			3.7	3.1	2.6			3.5	2.7	2.2			2.8
42.0	5.8	4.9	4.4	4.8	4.2	3.8			3.6	3.0	2.6			3.5	2.6	2.2			2.7
44.0	5.6	4.8	4.3	4.6	4.1	3.7			3.5	2.9	2.5			3.5	2.6	2.1			2.6
46.0	5.4	4.7	4.2	4.4	4.0	3.7			3.4	2.8	2.5			3.4	2.5	2.1			2.5
48.0	5.2	4.6	4.2	4.2	3.9	3.6			3.3	2.7	2.4			3.3	2.5	2.0			2.4
50.0	5.0	4.5	4.1	4.0	3.8	3.6			3.2	2.7	2.4			3.2	2.4	2.0			2.3
52.0	4.8	4.4	4.1	3.8	3.7	3.5			3.1	2.6	2.3			3.1	2.4	2.0			2.2
54.0	4.6	4.3	4.0	3.6	3.5	3.4			3.0	2.6	2.3			3.0	2.3	1.9			2.1
56.0	4.4	4.2	4.0	3.5	3.4	3.3			2.9	2.5	2.2			2.9	2.3	1.9			2.0
58.0	4.2	4.1	3.9	3.4	3.3	3.2			2.8	2.5	2.2			2.8	2.2	1.9			2.0
60.0	4.0	3.9	3.8	3.3	3.2	3.1			2.7	2.4	2.1			2.7	2.2	1.8			1.9
62.0	3.8	3.7	3.6	3.2	3.1	3.0			2.6	2.4	2.1			2.6	2.1	1.8			1.8
64.0	3.5	3.4	3.4	3.1	3.0	2.9			2.5	2.3	2.0			2.5	2.1	1.8			1.7
66.0	3.2	3.1	3.1	2.9	2.9	2.8			2.4	2.2	2.0			2.4	2.0	1.7			1.6
68.0	2.9	2.8		2.7	2.7	2.7			2.3	2.1	1.9			2.3	2.0	1.7			1.5
70.0	2.7			2.5	2.5	2.5			2.2	2.0	1.9			2.2	1.9	1.7			
72.0				2.3	2.3	2.3			2.1	1.9	1.9			2.1	1.9	1.6			
74.0				2.1	2.1				2.0	1.9	1.6			2.0	1.8	1.6			
76.0				1.9						1.9	1.7			1.9	1.7	1.6			
78.0										1.7	1.6								
80.0										1.5									
Reeving										1									
Hook											12 t								

LIFTING PERFORMANCE

Main Boom + Tip Boom

Unit: t



Working radius (m)	Outriggers completely extended 8.3 m, with 90 t counterweight, over sides and rear															
	Main boom length (m)															
	13.4*	17.7	17.7	17.7	17.7	17.7	17.7*	22.0	22.0	22.0	22.0	22.0	22.0	22.0	22.0*	
3.0	36.0															
3.5	35.0	36.0	36.0	36.0	36.0	36.0	36.0									
4.0	34.0	35.5	35.5	35.5	35.5	35.5	35.5									
4.5	33.0	35.0	35.0	35.0	35.0	35.0	35.0	34.0	36.0	36.0	36.0	36.0	36.0	36.0	36.0	36.0
5.0	32.0	34.0	34.0	34.0	34.0	34.0	34.0	33.0	34.0	35.0	35.0	35.0	35.0	35.0	35.0	35.0
5.5	31.0	33.0	33.0	33.0	33.0	33.0	33.0	32.0	30.5	34.5	34.5	34.5	34.5	34.5	34.5	34.5
6.0	30.0	32.0	32.0	32.0	32.0	32.0	32.0	32.0	29.0	34.0	34.0	34.0	34.0	34.0	34.0	34.0
7.0	28.0	30.0	30.0	30.0	30.0	30.0	30.0	30.0	27.0	32.0	32.0	32.0	32.0	32.0	32.0	32.0
8.0	27.0	29.0	29.0	29.0	29.0	29.0	29.0	29.0	25.0	30.5	30.5	30.5	30.5	30.5	30.5	30.5
9.0	26.0	28.0	28.0	28.0	28.0	28.0	28.0	28.0	22.5	29.5	29.5	29.5	29.5	29.5	29.5	29.5
10.0		27.0	27.0	27.0	27.0	27.0	27.0	27.0	21.0	28.0	28.0	28.0	28.0	28.0	28.0	28.0
11.0		26.0	26.0	26.0	26.0	26.0	26.0	26.0	20.0	27.5	27.5	27.5	27.5	27.5	27.5	27.5
12.0		25.5	25.5	25.5	25.5	25.5	25.5	25.5	18.5	27.0	27.0	27.0	27.0	27.0	27.0	27.0
14.0										16.5	24.5	25.5	25.5	25.5	25.5	25.5
16.0										15.0	21.5	23.0	24.0	24.0	24.0	24.0
Reeving										4						4
Hook																50 t
Telescoping mode	I	1	1	1	1	1	1	1	1	1	1	1	1	1	1	2
	II	1	1	1	1	1	1	2	1	1	1	1	1	1	2	2
	III	1	1	1	1	1	2	1	1	1	1	1	1	2	2	1
	IV	1	1	1	1	2	1	1	1	1	1	1	2	2	1	1
	V	1	1	1	2	1	1	1	1	1	1	2	2	1	1	1
	VI	1	1	2	1	1	1	1	1	1	2	2	1	1	1	1
	VII	1	2	1	1	1	1	1	3	2	1	1	1	1	1	1

LIFTING PERFORMANCE

Main Boom + Tip Boom Unit: t

Working radius (m)	Outriggers completely extended 8.3 m, with 90 t counterweight, over sides and rear														
	Main boom length (m)														
	26.3	26.3	26.3	26.3	26.3	26.3	26.3*	30.6	30.6	30.6	30.6	30.6	30.6	30.6*	
5.0	21.8	28.4	36.0	36.0	36.0	36.0	36.0								
5.5	21.0	27.2	35.5	35.5	35.5	35.5	35.5								
6.0	20.3	26.1	35.0	35.0	35.0	35.0	35.0	20.6	24.9	25.0	36.0	36.0	36.0	36.0	
7.0	18.7	24.0	34.0	34.0	34.0	34.0	34.0	19.2	22.9	23.0	35.5	35.5	35.5	35.5	
8.0	17.4	22.2	32.0	32.0	32.0	32.0	32.0	18.0	21.2	21.2	34.5	34.5	34.5	34.5	
9.0	16.3	20.6	31.0	31.0	31.0	31.0	31.0	17.0	19.7	19.7	33.0	33.0	33.0	33.0	
10.0	15.3	19.3	29.0	30.0	30.0	30.0	30.0	16.1	18.5	18.5	31.3	31.6	31.6	31.6	
11.0	14.5	18.2	27.5	29.0	29.0	29.0	29.0	15.3	17.4	17.4	29.7	30.8	30.8	30.8	
12.0	13.8	17.3	26.0	28.0	28.0	28.0	28.0	14.6	16.5	16.5	28.1	30.0	30.0	30.0	
14.0	12.5	15.6	24.0	27.0	27.0	27.0	27.0	13.3	14.8	14.7	25.2	28.0	28.0	28.0	
16.0	11.1	13.7	21.0	25.5	25.5	25.5	25.4	12.2	13.3	13.2	23.0	27.0	27.0	26.9	
18.0	9.9	12.2	18.7	24.0	24.5	24.4	24.3	11.2	12.1	12.0	21.0	25.5	26.0	25.8	
20.0	8.9	10.9	16.8	22.0	23.5	23.3	23.3	10.1	10.9	10.8	19.4	24.0	24.9	24.8	
22.0								9.1	9.8	9.7	17.7	22.0	23.8	23.8	
24.0								8.3	8.9	8.8	16.3	20.5	22.8	22.8	
Reeving	4							4							
Hook	50 t														
Telescoping mode	I	1	1	1	1	1	1	2	1	1	1	1	1	2	
	II	1	1	1	1	1	2	2	1	1	1	1	1	2	2
	III	1	1	1	1	2	2	2	1	1	1	1	2	2	2
	IV	1	1	1	2	2	2	1	1	1	1	2	2	2	2
	V	1	1	2	2	2	1	1	1	2	3	2	2	2	1
	VI	2	3	2	2	1	1	1	3	3	2	2	2	1	1
	VII	3	2	2	1	1	1	1	3	2	2	2	1	1	1

Main Boom + Tip Boom Unit: t

Working radius (m)	Outriggers completely extended 8.3 m, with 90 t counterweight, over sides and rear														
	Main boom length (m)														
	34.9	34.9	34.9	34.9	34.9	34.9	34.9*	39.2	39.2	39.2	39.2	39.2	39.2	39.2*	
7.0	19.8	21.4	23.6	29.1	36.0	36.0	36.0								
8.0	18.6	19.7	21.8	26.9	35.3	35.3	35.3	18.5	20.4	22.5	24.8	28.3	36.0	36.0	
9.0	17.6	18.3	20.3	25.0	34.6	34.6	34.6	17.2	19.0	21.2	23.1	26.3	35.5	35.5	
10.0	16.7	17.1	19.0	23.4	32.8	34.0	34.0	16.2	17.8	20.0	21.5	24.5	35.0	35.0	
11.0	15.9	16.0	17.9	22.0	31.2	32.0	32.0	15.2	16.7	18.8	20.2	23.0	33.8	34.0	
12.0	15.2	15.1	16.9	20.8	29.7	31.0	31.0	14.4	15.8	17.9	19.1	21.6	32.5	33.0	
14.0	13.6	13.4	15.0	18.5	27.0	30.0	30.0	12.7	14.0	16.0	16.9	19.2	30.0	31.0	
16.0	12.2	12.0	13.5	16.6	24.7	28.5	28.4	11.4	12.6	14.5	15.2	17.2	27.5	29.5	
18.0	11.0	10.8	12.2	15.0	22.7	27.0	26.8	10.3	11.4	13.3	13.7	15.5	25.5	28.5	
20.0	10.1	9.9	11.2	13.7	21.0	26.5	26.3	9.5	10.5	12.3	12.6	14.2	24.0	27.4	
22.0	9.3	9.1	10.3	12.6	19.7	25.0	25.8	8.8	9.7	11.4	11.6	13.1	22.5	25.8	
24.0	8.3	8.1	9.2	11.7	18.6	23.7	24.0	8.0	8.9	10.6	10.7	12.1	21.5	24.8	
26.0	7.6	7.4	8.4	10.6	17.2	21.8	21.6	7.2	8.0	9.6	9.7	11.0	20.0	23.0	
28.0	6.9	6.7	7.7	9.7	16.0	20.2	19.3	6.5	7.3	8.8	8.8	10.0	18.6	20.3	
30.0								5.9	6.6	8.0	8.0	9.1	17.2	17.9	
32.0								5.4	6.0	7.4	7.3	8.3	16.0	15.9	
Reeving	4							4							
Hook	50 t														
Telescoping mode	I	1	1	1	1	1	1	2	1	1	1	1	1	2	
	II	1	1	1	1	1	2	2	1	1	1	1	1	2	2
	III	1	1	1	1	2	2	2	1	1	1	2	3	2	2
	IV	1	1	2	3	2	2	2	2	1	2	3	3	2	2
	V	2	3	3	2	2	2	2	3	3	3	2	2	2	2
	VI	3	3	2	2	2	2	1	3	3	2	2	2	2	2
	VII	3	2	2	2	2	1	1	3	2	2	2	2	2	1

LIFTING PERFORMANCE

Main Boom + Tip Boom Unit: t

Working radius (m)	Outriggers completely extended 8.3 m, with 90 t counterweight, over sides and rear														
	Main boom length (m)														
	43.5	43.5	43.5	43.5	43.5	43.5	43.5*	47.8	47.8	47.8	47.8	47.8	47.8	47.8*	
10.0	16.7	18.3	20.1	22.2	26.0	33.8	35.5								
11.0	15.9	17.5	19.1	21.2	24.8	32.1	35.0	16.1	17.8	19.5	21.9	25.3	32.6	35.5	
12.0	15.2	16.8	18.2	20.3	23.8	30.8	34.5	15.5	17.1	18.7	21.1	24.4	31.5	34.8	
14.0	13.5	15.0	16.1	18.1	21.2	27.4	31.7	14.0	15.3	16.8	19.2	22.2	28.6	32.4	
16.0	12.1	13.5	14.4	16.3	19.1	24.6	29.3	12.7	13.7	15.2	17.6	20.4	26.2	30.4	
18.0	11.0	12.4	13.0	14.7	17.4	22.4	27.3	11.6	12.4	13.8	16.2	18.8	24.1	27.8	
20.0	10.1	11.4	11.9	13.4	16.0	20.5	25.6	10.7	11.3	12.7	14.7	17.3	22.2	25.5	
22.0	9.3	10.6	11.0	12.4	14.9	19.1	24.4	9.9	10.4	11.7	13.5	16.0	20.5	23.5	
24.0	8.6	9.8	10.1	11.4	13.8	17.6	23.1	9.2	9.6	10.8	12.6	15.1	19.2	22.0	
26.0	7.9	9.1	9.3	10.5	12.8	16.3	21.5	8.6	8.9	10.0	11.7	14.1	17.9	20.4	
28.0	7.3	8.4	8.5	9.6	11.8	15.0	20.1	7.9	8.1	9.1	10.7	13.0	16.5	18.7	
30.0	6.6	7.7	7.7	8.7	10.8	13.8	18.9	7.2	7.4	8.3	9.8	12.0	15.2	17.2	
32.0	6.0	7.0	7.0	7.9	10.0	12.7	17.0	6.6	6.7	7.5	9.0	11.1	14.0	15.9	
34.0	5.5	6.4	6.4	7.2	9.2	11.7	15.2	6.0	6.1	6.8	8.2	10.3	12.9	14.7	
36.0	5.0	5.9	5.9	6.6	8.5	10.8	13.6	5.5	5.6	6.2	7.5	9.5	12.0	13.3	
38.0								5.1	5.1	5.7	6.9	8.8	11.1	11.9	
40.0								4.7	4.7	5.2	6.4	8.2	10.3	10.7	
Reeving	4							4							
Hook	50 t														
Telescoping mode	I	1	1	1	1	1	1	2	1	1	1	1	1	3	
	II	1	1	1	1	1	2	1	1	1	1	2	3	2	
	III	1	1	1	1	2	2	2	1	1	1	2	3	2	2
	IV	1	1	2	3	2	2	2	2	1	2	3	3	2	2
	V	2	3	3	2	2	2	2	3	3	3	2	2	2	2
	VI	3	3	2	2	2	2	1	3	3	2	2	2	2	2
	VII	3	2	2	2	2	1	1	3	2	2	2	2	2	2

Main Boom + Tip Boom Unit: t

Working radius (m)	Outriggers completely extended 8.3 m, with 90 t counterweight, over sides and rear													
	Main boom length (m)													
	52.1	52.1	52.1	52.1	52.1	52.1*	56.4	56.4	56.4	56.4	56.4	56.4	56.4*	
12.0	15.8	17.2	19.5	22.1	25.5	31.5								
14.0	14.4	15.7	17.7	20.3	23.4	29.0	13.9	15.8	17.8	20.2	23.0			
16.0	13.1	14.2	16.1	18.6	21.5	26.7	12.8	14.4	16.4	18.7	21.3			
18.0	11.8	12.9	14.8	17.2	19.9	24.7	11.8	13.2	15.1	17.4	19.8			
20.0	10.7	11.8	13.6	15.9	18.4	22.8	10.9	12.2	14.0	16.3	18.5			
22.0	9.8	10.8	12.5	14.6	17.0	21.1	10.0	11.3	13.0	15.2	17.3			
24.0	9.1	10.0	11.6	13.5	15.9	19.7	9.3	10.5	12.1	14.2	16.2			
26.0	8.4	9.3	10.8	12.7	15.1	18.5	8.6	9.7	11.3	13.3	15.2			
28.0	7.8	8.7	10.1	11.9	14.2	17.3	8.0	9.1	10.6	12.4	14.3			
30.0	7.3	8.1	9.4	11.2	13.5	16.0	7.5	8.5	9.9	11.6	13.6			
32.0	6.7	7.4	8.6	10.3	12.5	14.7	7.0	8.0	9.3	10.9	12.9			
34.0	6.1	6.8	7.9	9.5	11.7	13.6	6.6	7.5	8.7	10.3	12.3			
36.0	5.6	6.1	7.2	8.8	10.9	12.5	6.2	7.0	8.2	9.8	11.7			
38.0	5.1	5.6	6.6	8.1	10.2	11.5	5.8	6.6	7.7	9.3	10.9			
40.0	4.7	5.1	6.1	7.5	9.5	10.6	5.4	6.1	7.2	8.7	10.1			
42.0	4.3	4.7	5.6	6.9	8.9	9.6	5.0	5.6	6.7	8.2	9.3			
44.0	4.0	4.3	5.1	6.4	8.2	8.6	4.6	5.2	6.2	7.6	8.6			
46.0							4.2	4.8	5.7	7.1	7.9			
48.0							3.8	4.4	5.2	6.6	7.2			
Reeving	4							4						
Hook	50 t													
Telescoping mode	I	1	1	1	1	2	3	1	1	1	2	3		
	II	1	1	2	3	3	3	1	2	3	3	3		
	III	2	3	3	3	3	2	3	3	3	3	3		
	IV	3	3	3	3	2	2	3	3	3	3	2		
	V	3	3	3	2	2	2</							

LIFTING PERFORMANCE

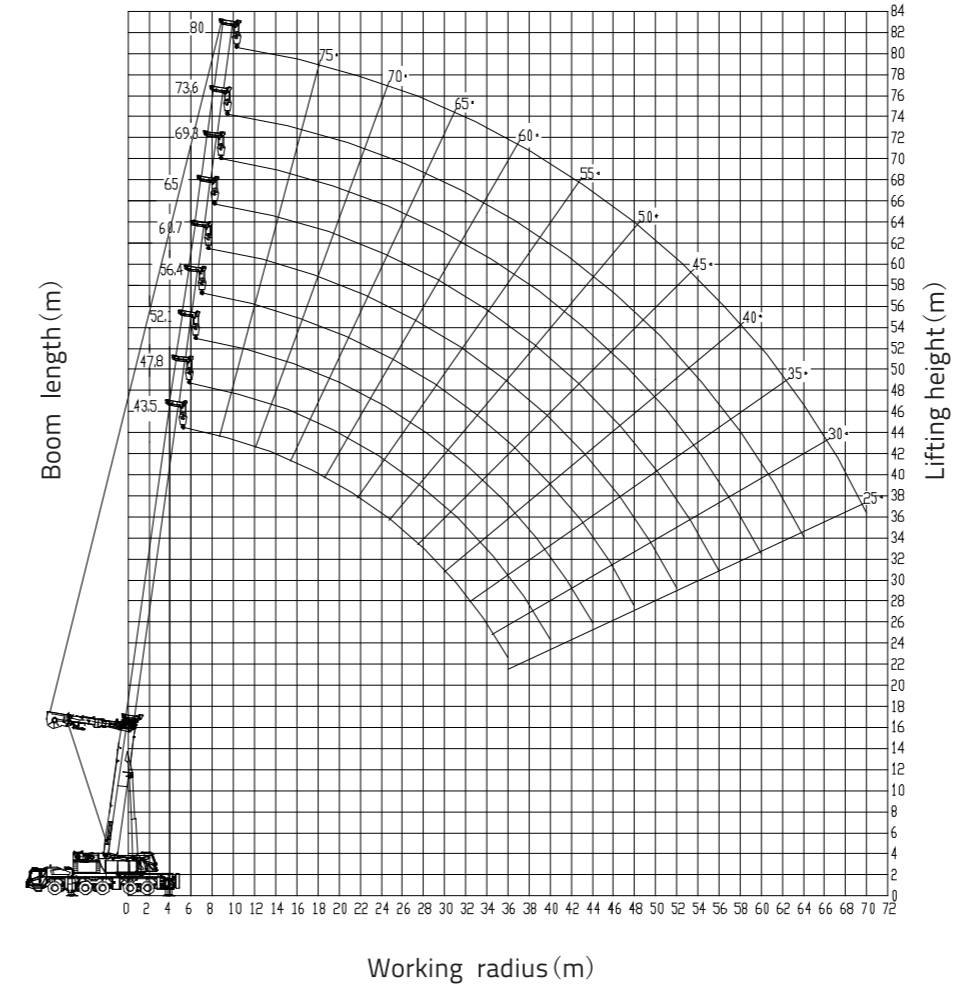
Main Boom + Tip Boom

Unit: t

Working radius (m)	Outriggers completely extended 8.3 m, with 90 t counterweight, over sides and rear											
	Main boom length (m)											
	60.7	60.7	60.7	60.7*	65.0	65.0	65.0*	69.3	69.3*	73.6*	80.0*	
14.0	14.5	16.5	18.6	20.5								
16.0	13.5	15.3	17.2	19.1	13.8	15.6	17.2					
18.0	12.5	14.2	16.0	17.9	12.9	14.6	16.0	12.7	14.0			
20.0	11.6	13.1	14.9	16.8	12.1	13.7	15.1	12.0	13.2	11.0		
22.0	10.8	12.2	13.9	15.8	11.3	12.8	14.2	11.3	12.4	10.6	8.5	
24.0	10.0	11.4	13.0	14.8	10.6	12.0	13.4	10.7	11.7	10.2	8.3	
26.0	9.3	10.6	12.2	13.9	10.0	11.3	12.7	10.1	11.1	9.8	8.1	
28.0	8.7	9.9	11.5	13.1	9.4	10.7	12.1	9.5	10.5	9.4	7.9	
30.0	8.2	9.3	10.8	12.3	8.9	10.1	11.5	9.0	9.9	9.0	7.7	
32.0	7.7	8.8	10.2	11.6	8.4	9.6	10.9	8.5	9.4	8.6	7.5	
34.0	7.2	8.3	9.6	11.0	7.9	9.1	10.3	8.1	8.9	8.2	7.3	
36.0	6.8	7.8	9.1	10.5	7.5	8.6	9.7	7.7	8.4	7.8	7.0	
38.0	6.4	7.3	8.6	10.0	7.1	8.1	9.2	7.3	8.0	7.4	6.7	
40.0	6.0	6.9	8.1	9.5	6.7	7.6	8.7	6.9	7.6	7.1	6.4	
42.0	5.7	6.5	7.6	9.0	6.4	7.2	8.2	6.5	7.2	6.8	6.1	
44.0	5.3	6.0	7.1	8.3	6.0	6.8	7.7	6.2	6.9	6.5	5.8	
46.0	4.9	5.6	6.6	7.6	5.6	6.4	7.2	5.9	6.6	6.2	5.5	
48.0	4.5	5.2	6.1	7.0	5.3	6.0	6.7	5.7	6.3	5.9	5.3	
50.0	4.1	4.8	5.6	6.4	5.0	5.6	6.2	5.5	6.0	5.6	5.1	
52.0	3.8	4.4	5.2	5.9	4.6	5.2	5.7	5.2	5.7	5.4	4.9	
54.0					4.2	4.8	5.2	4.9	5.3	5.1	4.7	
56.0					3.8	4.4	4.8	4.6	4.9	4.8	4.5	
58.0								4.3	4.5	4.5	4.2	
60.0								4.0	4.1	4.2	4.0	
62.0										3.9	3.8	
64.0											3.6	3.5
66.0												3.2
68.0												2.9
70.0												2.6
Reeving	3						2					
Hook	25 t						25 t					
Telescoping mode	I	1	1	2	3	1	2	3	2	3	3	4
	II	2	3	3	3	3	3	3	3	3	3	4
	III	3	3	3	3	3	3	3	3	3	3	4
	IV	3	3	3	3	3	3	3	3	3	3	4
	V	3	3	3	2	3	3	3	3	3	3	4
	VI	3	3	2	2	3	3	2	3	3	3	4
	VII	3	2	2	2	3	2	2	3	2	3	4

LIFTING PERFORMANCE

Main Boom + Y-shaped Guying System



Main Boom + Y-shaped Guying System

Unit: t

Working radius (m)	Outriggers completely extended 8.3 m, with 90 t counterweight, over full range															
	Main boom length (m)															
	43.5	43.5	43.5	43.5	43.5	43.5	43.5*	47.8	47.8	47.8	47.8	47.8	47.8	47.8	47.8*	
6.0	56.1	59.2	62.6	66.4	67.4	67.8	68.0									
7.0	53.2	55.5	58.6	62.7	64.9	65.3	65.5	48.4	51.5	54.2	58.9	61.3	61.9	62.0		
8.0	50.1	52.0	54.9	58.3	61.6	63.0	63.2	46.5	49.1	51.7	55.7	58.6	60.4	60.5		
9.0	47.7	49.4	52.2	55.0	58.2	61.4	61.6	44.1	46.3	48.8	52.1	55.0	58.2	58.4		
10.0	44.6	46.3	49.0	51.2	54.3	59.0	59.2	41.6	43.7	46.2	48.9	51.7	56.4	56.5		
11.0	41.8	43.4	46.0	47.8	50.8	56.8	57.0	39.4	41.4	43.8	46.1	48.9	54.6	54.7		
12.0	39.4	41.0	43.6	44.9	47.8	53.6	55.0	37.3	39.2	41.3	43.4	46.2	52.0	53.0		
14.0	35.1	36.6	39.1	39.8	42.5	47.5	51.2	33.5	35.2	36.7	38.7	41.3	46.5	49.5		
16.0	31.5	32.9	35.3	35.6	38.2	42.6	47.0	30.4	32.0	33.0	34.9	37.4	42.0	45.0		
18.0	28.6	30.0	32.1	32.2	34.7	38.6	39.6	27.8	29.3	30.0	31.8	34.2	38.4	38.0		
20.0	26.2	27.5	29.2	29.3	31.7	34.5	34.0	25.5	27.0	27.4	29.2	31.6	33.2	32.8		
22.0	24.2	25.5	26.9	27.0	29.3	30.2	29.7	23.6	25.0	25.2	26.9	29.2	28.9	28.5		
24.0	22.5	23.7	24.9	25.0	27.0	26.7	26.2	21.9	23.1	23.2	24.8	26.0	25.4	25.0		
26.0	21.0	22.2	23.1	23.2	24.1	23.8	23.3	20.5	21.5	23.0	23.1	22.5	22.1			
28.0	19.7	20.8	21.6	21.7	21.7	21.4	20.9	19.3	20.1	20.1	21.2	20.7	20.1	19.7		
30.0	18.5	19.6	20.2	20.1	19.6	19.3	18.8	18.2	18.8	18.8	19.2	18.7	18.1	17.7		
32.0	17.5	18.5	18.8	18.3	17.8	17.5	17.0	17.2	17.7	17.7	17.5	17.0	16.4	16.0		
34.0	16.5	17.5	17.2	16.7	16.2	15.9	15.4	16.4	16.8	16.7	16.0	15.5	14.9	14.5		
36.0	15.4	16.0	15.4	14.9	14.4	14.1	13.6	15.6	15.9	15.4	14.7	14.2	13.6	13.2		
38.0								14.8	14.7	14.2	13.5	13.0	12.4	12.0		
40.0								14.0	13.3	12.8	12.1	11.6	11.0	10.6		
Reeving	7								6							
Hook	80 t															
Telescoping mode	I	1	1	1	1	1	1	2	1	1	1	1	1	2	3	
	II	1	1	1	1	2	3	2	1	1	1	2	3	3	2	
	III	1	1	2	3	3	2	2	1	2	3	3	3	2	2	
	IV	2	3	3	3	2	2	2	3	3	3	2	2	2	2	
	V	3	3	3	2	2	2	2	3	3	3	2	2	2	2	
	VI	3	3	2	2	2	2	2	3	3	2	2	2	2	2	
	VII	3	2	2	2	2	2	2	3	2	2	2	2	2	2	

LIFTING PERFORMANCE

Main Boom + Y-shaped Guying System

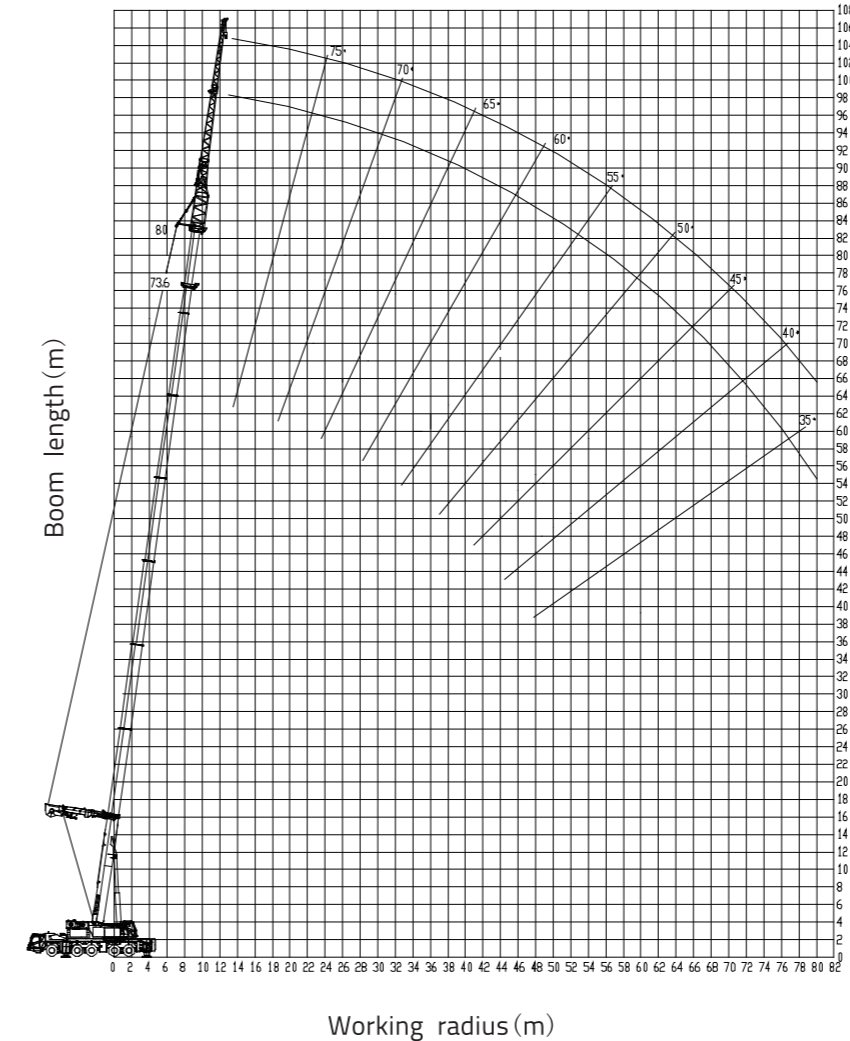
Unit: t

Working radius (m)	Outriggers completely extended 8.3 m, with 90 t counterweight, over full range												
	Main boom length (m)												
	52.1	52.1	52.1	52.1	52.1	52.1*	56.4	56.4	56.4	56.4	56.4*		
8.0	40.0	42.1	45.2	48.5	51.1	53.0							
9.0	38.5	40.4	43.3	46.2	48.8	52.0	34.9	37.6	40.2	42.8	45.0		
10.0	37.2	39.0	41.7	44.2	46.8	51.0	34.4	36.9	39.3	41.7	44.0		
11.0	35.7	37.5	40.2	42.3	44.9	50.0	33.9	36.1	38.5	40.6	43.0		
12.0	34.4	36.1	38.5	40.5	43.2	48.5	33.2	35.2	37.5	39.5	42.0		
14.0	31.9	33.6	35.4	37.3	40.0	45.0	30.9	32.8	34.6	36.5	39.0		
16.0	29.6	31.1	32.5	34.3	36.9	41.5	28.9	30.7	32.1	34.0	36.5		
18.0	27.5	28.7	30.1	31.9	34.5	37.7	27.0	28.4	29.7	31.5	34.0		
20.0	25.6	26.5	27.8	29.6	32.1	32.6	25.4	26.5	27.8	29.6	32.0		
22.0	23.8	24.4	25.6	27.3	28.9	28.3	23.7	24.7	25.9	27.8	28.4		
24.0	22.1	22.5	23.7	25.3	25.4	24.8	21.9	22.8	24.0	25.6	24.9		
26.0	20.7	20.9	22.0	23.3	22.5	21.9	20.4	21.2	22.3	22.7	22.0		
28.0	19.4	19.5	20.5	20.9	20.1	19.5	19.0	19.8	20.9	20.3	19.6		
30.0	18.2	18.2	19.2	18.8	18.0	17.4	17.8	18.5	19.0	18.2	17.5		
32.0	17.0	17.0	17.6	17.0	16.2	15.6	16.7	17.4	17.3	16.4	15.7		
34.0	16.1	16.0	16.1	15.5	14.7	14.1	15.8	16.4	15.8	14.9	14.2		
36.0	15.2	15.1	14.7	14.2	13.4	12.8	14.9	15.1	14.4	13.6	12.9		
38.0	14.4	14.2	13.4	12.9	12.2	11.6	14.1	13.9	13.2	12.4	11.7		
40.0	13.5	13.0	12.3	11.7	11.0	10.5	13.3	12.8	12.2	11.4	10.7		
42.0	12.5	11.9	11.2	10.6	9.8	9.3	12.5	11.7	11.1	10.3	9.6		
44.0	11.4	10.8	10.1	9.5	8.7	8.2	11.5	10.7	10.1	9.3	8.6		
46.0							10.5	9.7	9.1	8.3	7.6		
48.0							9.6	8.8	8.2	7.4	6.7		
Reeving	4						4						
Hook	80 t						80 t						
Telescoping mode	I	1	1	1	1	2	3	1	1	2	3		
	II	1	1	2	3	3	3	1	2	3	3	3	
	III	2	3	3	3	3	2	3	3	3	3	3	
	IV	3	3	3	3	2	2	3	3	3	3	2	
	V	3	3	3	2	2	2	3	3	3	2	2	
	VI	3	3	2	2	2	2	3	3	2	2	2	
	VII	3	2	2	2	2	2	3	2	2	2	2	

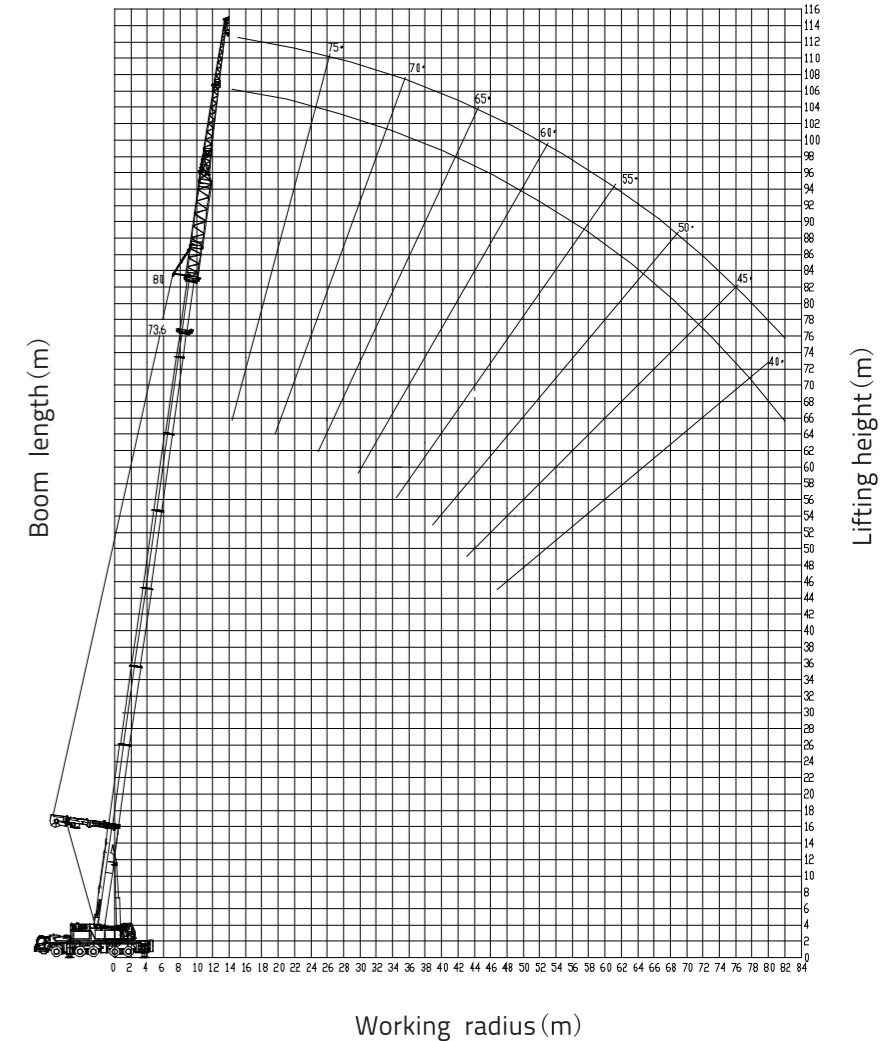
Working radius (m)	Outriggers completely extended 8.3 m, with 90 t counterweight, over full range												
	Main boom length (m)												
	60.7	60.7	60.7	60.7*	65.0	65.0	65.0*	69.3	69.3*	73.6*	80.0*		
10.0	32.0	34.1	36.5	38.5									
11.0	31.8	33.8	36.2	38.0	28.6	30.6	32.5	25.4	27.4				
12.0	31.4	33.4	35.7	37.5	28.4	30.1	32.0	25.1	27.0	22.4			
14.0	29.8	31.6	33.6	35.4	27.2	28.9	30.6	24.5	26.1	21.8	17.0		
16.0	28.2	29.9	31.5	33.3	26.0	27.7	29.2	23.7	25.2	21.2	16.6		
18.0	26.6	28.1	29.5	31.2	25.0	26.5	27.8	22.9	24.3	20.6	16.2		
20.0	24.8	26.0	27.4	29.1	23.8	25.1	26.4	22.1	23.4	20.0	15.8		
22.0	23.1	24.0	25.3	27.0	22.6	23.7	25.0	21.3	22.4	19.4	15.4		
24.0	21.7	22.6	23.8	24.5	21.5	22.4	23.6	20.4	21.4	18.8	15.0		
26.0	20.3	21.1	22.3	21.8	20.3	21.2	21.8	19.5	20.4	18.0	14.6		
28.0	19.0	19.8	20.3	19.5	19.2	20.0	19.6	18.5	19.2	17.2	14.1		
30.0	17.8	18.6	18.3	17.5	18.0	18.5	17.7	17.6	17.4	16.4	13.7		
32.0	16.8	17.5	16.6	15.8	17.0	16.8	16.0	16.7	15.8	15.2	13.1		
34.0	15.9	16.0	15.1	14.3	16.0	15.3	14.5	15.3	14.4	14.1	12.5		
36.0	15.1	14.7	13.8	13.0	14.9	14.0	13.2	14.1	13.2	13.0	11.9		
38.0	14.2	13.5	12.6	11.8	13.7	12.8	12.0	13.0	12.1	12.0	11.4		
40.0	13.2	12.5	11.6	10.8	12.7	11.8	11.0	12.0	11.1	11.1	10.8		
42.0	12.3	11.6	10.7	9.9	11.8	10.9	10.0	11.1	10.2	10.2	10.1		
44.0	11.3	10.6	9.7	8.9	10.9	10.0	9.1	10.3	9.4	9.5	9.4		
46.0	10.4	9.7	8.8	8.0	10.0	9.1	8.3	9.6	8.7	8.8	8.7		
48.0	9.4	8.7	7.9	7.1	9.2	8.3	7.5	8.8	8.0	8.1	8.1		
50.0	8.5	7.8	6.9	6.2	8.5	7.6	6.8	8.1	7.3	7.4	7.5		
52.0	7.7	7.0	6.1	5.4	7.8	6.9	6.1	7.4	6.6	6.7	6.9		
54.0					7.1	6.2	5.4	6.7	5.9	6.1	6.3		
56.0					6.4	5.5	4.7	6.0	5.2	5.5	5.7		
58.0								5.4	4.6	4.9	5.2		
60.0								4.8	4.0	4.4	4.7		
62.0										3.9	4.2		
64.0										3.4	3.7		
66.0											3.2		
68.0											2.8		
70.0											2.4		
Reeving	4				3				2				
Hook	80 t				80 t				25 t				
Telescoping mode	I	1	1	2	3	1	2	3	2	3	3	4	
	II	2	3	3	3	3	3	3	3	3	3	4	
	III	3	3	3	3	3	3	3	3	3	3	4	
	IV	3	3	3	3	3	3	3	3	3	3	4	
	V	3	3	3	2	3	3	3	3	3	3	4	
	VI	3	3	2	2	3	3	2	3	3	3	4	
	VII	3	2	2	2	3	2	2	3	2	3	4	

LIFTING PERFORMANCE

Main Boom(73.6m, 80m) + Y-shaped Guying System + Jibs (24m)

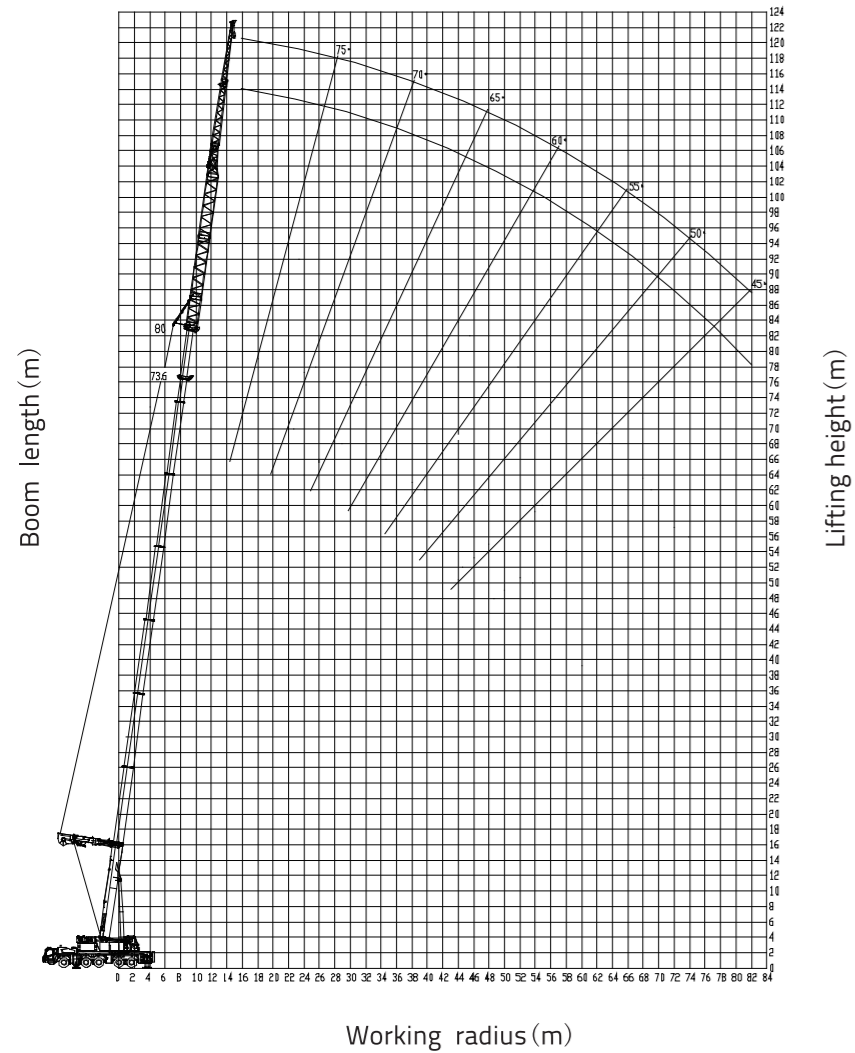


Main Boom(73.6m, 80m) + Y-shaped Guying System + Jibs (32m)



LIFTING PERFORMANCE

Main Boom(73.6m, 80m) + Y-shaped Guying System + Jibs (40m)

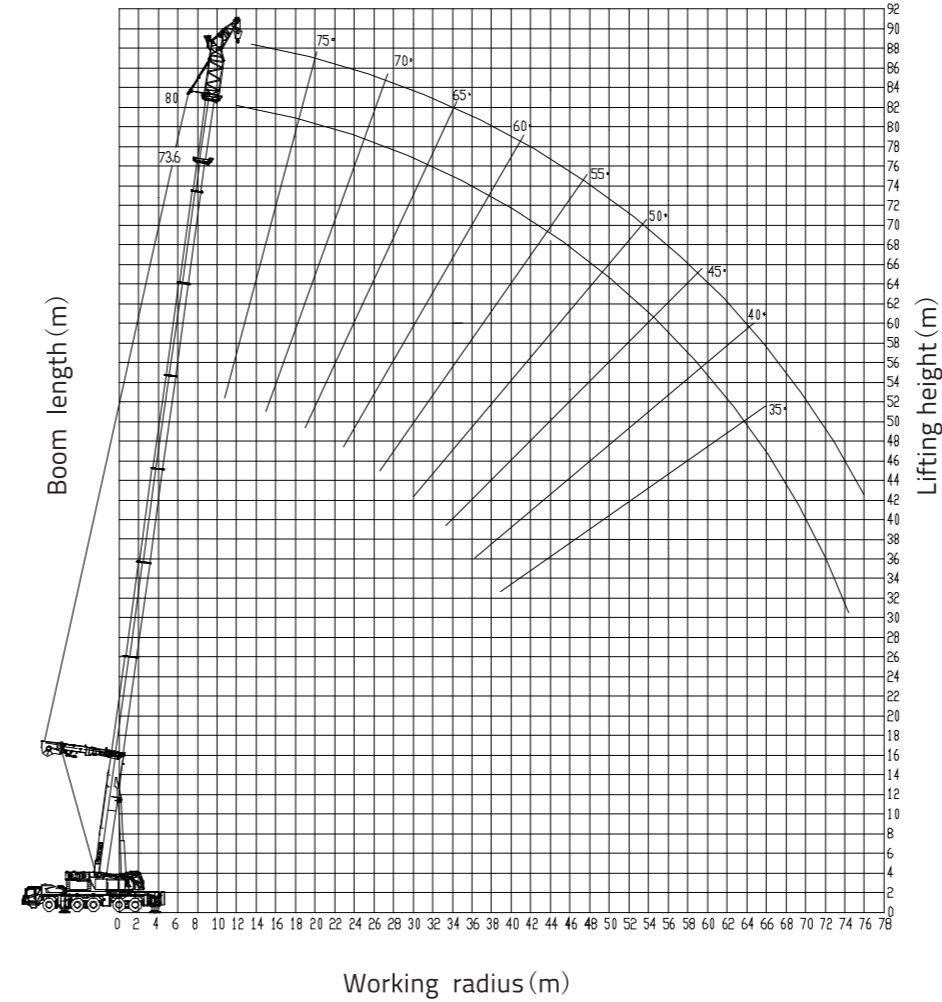


Unit: t

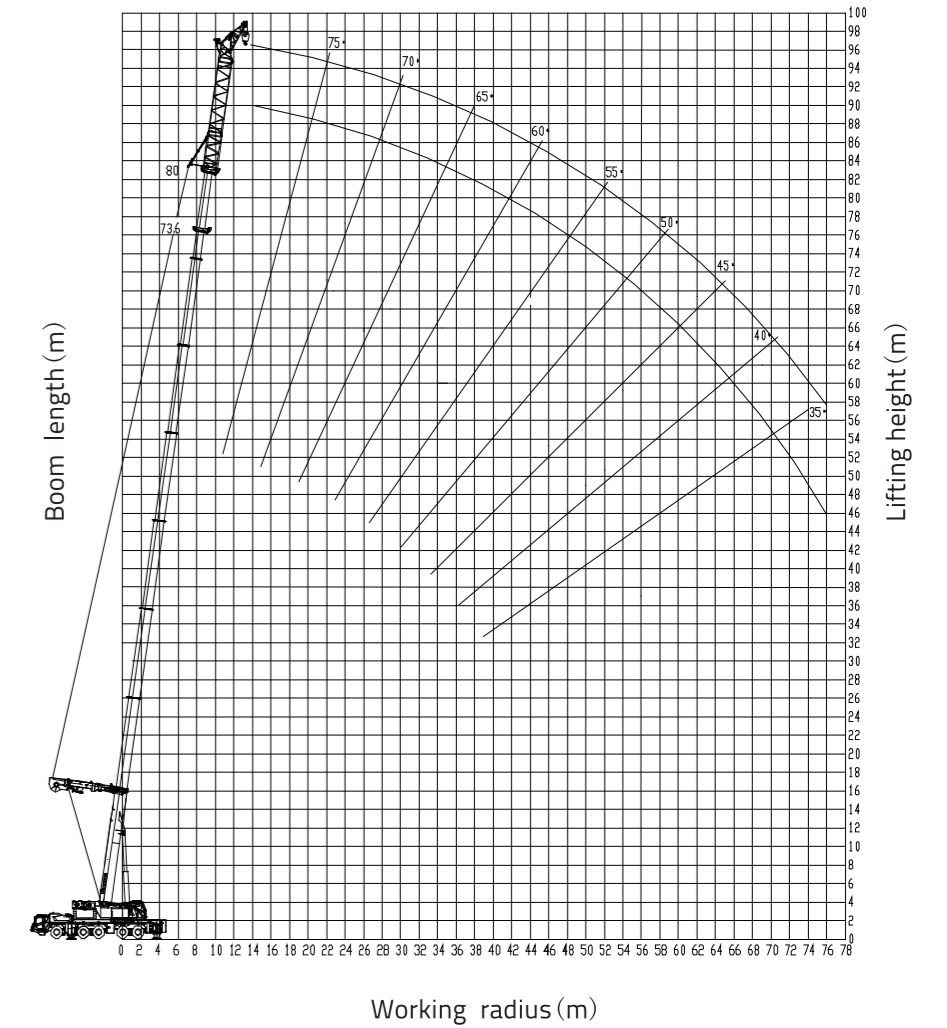
Working radius (m)	Outriggers completely extended 8.3 m, with 90 t counterweight, over sides and rear					
	Main boom (m) + A-frame + Jib (m) + Offset (°)					
	73.6	80.0	73.6	80.0	73.6	80.0
20.0	4.0	4.0	4.0	4.0	4.0	4.0
22.0	5.7	4.8	5.0			
24.0	5.5	4.7	5.0			
26.0	5.3	4.6	4.9	3.9		
28.0	5.1	4.5	4.9	3.9	3.6	
30.0	4.9	4.4	4.8	3.9	3.6	
32.0	4.7	4.3	4.7	3.9	3.6	
34.0	4.5	4.2	4.6	3.8	3.6	2.6
36.0	4.3	4.1	4.5	3.8	3.5	2.6
38.0	4.2	4.0	4.4	3.8	3.5	2.6
40.0	4.1	3.9	4.3	3.8	3.5	2.6
42.0	4.0	3.8	4.2	3.7	3.5	2.6
44.0	3.9	3.7	4.1	3.7	3.4	2.6
46.0	3.8	3.6	4.0	3.7	3.4	2.5
48.0	3.7	3.5	3.9	3.7	3.4	2.5
50.0	3.6	3.4	3.8	3.6	3.3	2.5
52.0	3.5	3.3	3.7	3.5	3.2	2.5
54.0	3.4	3.2	3.6	3.4	3.1	2.5
56.0	3.3	3.1	3.5	3.3	3.0	2.4
58.0	3.2	3.0	3.4	3.2	2.9	2.4
60.0	3.1	2.9	3.3	3.1	2.8	2.4
62.0	3.0	2.8	3.2	3.0	2.7	2.4
64.0	2.9	2.7	3.1	2.9	2.6	2.3
66.0	2.8	2.6	3.0	2.8	2.5	2.2
68.0	2.7	2.5	2.9	2.7	2.4	2.1
70.0	2.5	2.3	2.7	2.6	2.3	2.0
72.0	2.3	2.1	2.5	2.4	2.2	1.9
74.0	2.1	1.9	2.3	2.2	2.1	1.8
76.0	1.8	1.7	2.1	2.0	2.0	1.7
78.0	1.5	1.4	1.8	1.7	1.8	1.6
80.0	1.2	1.1	1.5	1.4	1.6	1.5
82.0			1.2	1.1	1.4	1.3
Reeving	1					
Hook	12 t					

LIFTING PERFORMANCE

Main boom (73.6 m / 80 m) + Y-shaped guying system + tip boom

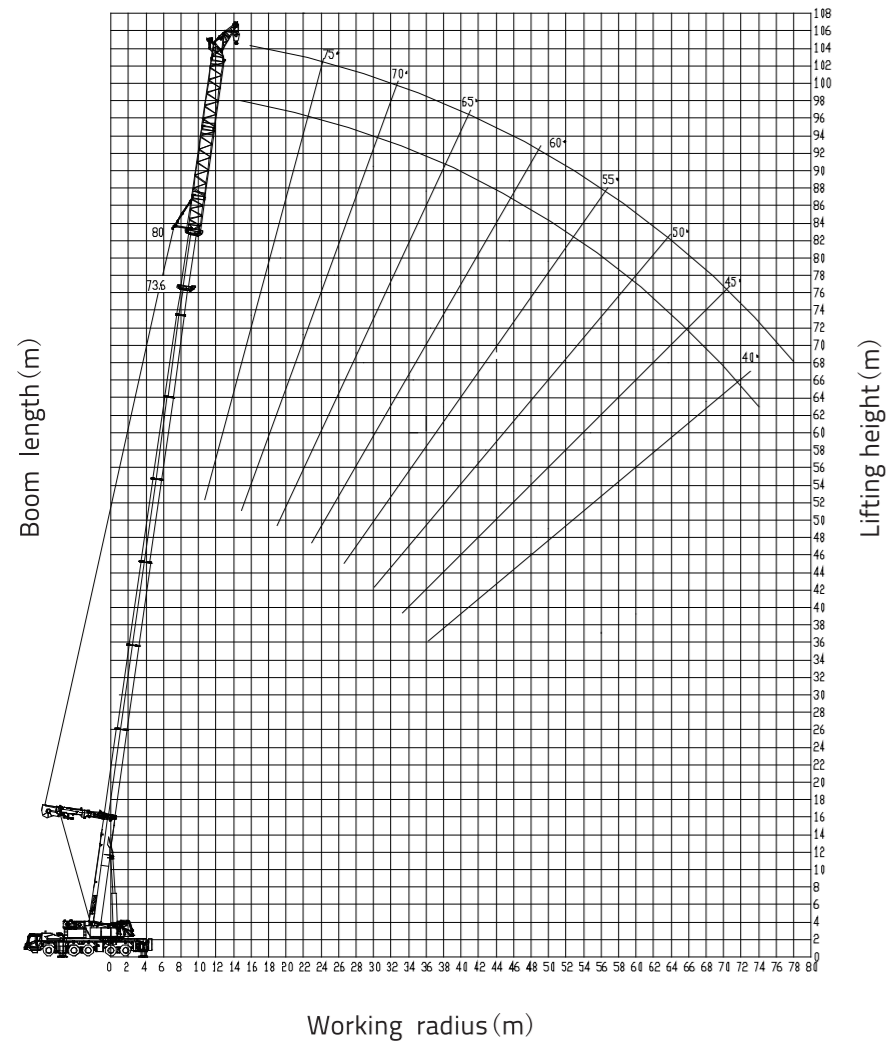


Main Boom (73.6 m / 80 m) + Y-shaped Guying System +8 m Extension + Tip Boom



LIFTING HEIGHT CURVE

Main Boom (73.6 M / 80 M) + Y-shaped Guying System
+ 8 M Extension + 8 M Extension+ Tip Boom



Unit: t

Working radius (m)	Outriggers completely extended 8.3 m, with 90 t counterweight, over sides and rear					
	Main boom (m) + A-frame (m) + Extension (m) + Tip boom (m)					
	73.6	80.0	73.6	80.0	73.6	80.0
	4.0	4.0	4.0	4.0	4.0	4.0
	0.0	0.0	8.0	8.0	16.0	16.0
	4.5	4.5	4.5	4.5	4.5	4.5
16.0	15,8					
18.0	15,5	13,1	11,1			
20.0	15,2	12,9	10,9	9,2		
22.0	14,9	12,7	10,7	9,1	7,8	
24.0	14,6	12,5	10,5	9,0	7,7	6,4
26.0	14,1	12,3	10,3	8,9	7,6	6,3
28.0	13,6	12,1	10,1	8,8	7,5	6,2
30.0	13,1	11,8	9,9	8,7	7,3	6,1
32.0	12,6	11,4	9,6	8,6	7,1	6,0
34.0	12,1	11,0	9,3	8,5	6,9	5,9
36.0	11,6	10,6	9,0	8,3	6,7	5,8
38.0	11,1	10,2	8,7	8,1	6,5	5,7
40.0	10,6	9,8	8,5	7,9	6,3	5,6
42.0	10,0	9,4	8,3	7,7	6,1	5,5
44.0	9,2	8,9	8,1	7,5	5,9	5,4
46.0	8,6	8,2	7,9	7,3	5,7	5,3
48.0	7,9	7,5	7,6	7,1	5,5	5,2
50.0	7,3	7,0	7,1	6,8	5,4	5,1
52.0	6,7	6,5	6,6	6,5	5,3	5,0
54.0	6,0	6,0	5,8	6,0	5,2	4,9
56.0	5,4	5,5	5,1	5,5	5,1	4,8
58.0	4,9	5,0	4,4	4,9	5,0	4,7
60.0	4,4	4,5	3,8	4,3	4,9	4,6
62.0	3,8	3,9	3,2	3,7	4,5	4,5
64.0	3,2	3,4	2,6	3,1	3,9	4,2
66.0		2,9	2,1	2,6	3,3	3,6
68.0		2,5	1,6	2,1	2,7	3,1
70.0				1,6	2,2	2,6
72.0					1,7	2,1
74.0						1,6
Reeving	2					
Hook	25 t					

TECHNICAL SPECIFICATIONS

Crane Superstructure

Main boom	8 oval boom sections made of low-alloy and high-strength steel plate, providing the boom with excellent bending-resistance capacity, super load bearing capacity, light deadweight, large lateral stiffness and small end deflection. Main boom length: 13.4m – 80m.
Jib	It consists of two jib sections. Jib sections 1 and 2 are reducing lattice structured. There are two jib lengths, namely 12m and 20m, according to the operating requirements. Jib variants: 12 m, 20 m, 28 m (assembled with one piece of extension), 36 m (assembled with two pieces of extensions).
Slewing gear	Dual slewing gears, consisting of hydraulic motor and planetary reducer.
Hoisting gear	High quality hosting gear with integrated reducer, drum and motor, the special groove on the drum enables optimum spooling and extend the service life of wire ropes. Rope diameter: ϕ 24 mm.
Hydraulic system	The superstructure is electro-hydraulic proportional controlled with computer system, providing comfortable operation, accurate micro-positioning performance and simultaneous movements.
Engine	WEICHAI WP13.530E50, water-cooled 6-cylinder in-line diesel, turbo-charged, inter-cooled, power / RPM: 390 kW at 2100 r/min. Max. output torque / RPM: 2220 N.m at 1200~1500 r/min.
Operator's cab	New cab with spacious room and man-machine friendly layout offers a comfortable operating experience. AC and heater.
Safety devices	LMI, limit switch, relief valve, emergency stop button etc.
Counterweight	Counterweight variant 1: 0 tons, 10 tons, 25 tons, 40 tons, 52 tons, 64 tons, 76 tons and 90 tons (optional). Counterweight variant 2: 0 tons, 10 tons, 20 tons, 30 tons, 40 tons, 52 tons and 76 tons.
Lubrication	Automobile lubrication system for major movement.
Superlift	The Y-shaped gying system can tension the boom via stay ropes to form a stable Y-frame, thus decreases boom deflection and increases lifting capacity with long and intermediate booms.

Crane Carrier

Chassis frame	Made by ZOOMLION with high-tensile steel plate.
Outrigger	H-type outriggers, hydraulically extendable into horizontal and vertical directions. The sliding beams are extendable (fully or intermediately) simultaneously via one telescoping cylinder and extension / retraction rope.
Engine	WEICHAI WP13.530E50, water-cooled 6-cylinder in-line diesel, turbo-charged, inter-cooled, power / RPM: 390 kW at 2100 r/min. Max. output torque / RPM: 2220 N.m at 1200~1500 r/min.
Transmission	Fast 12 JZSD240A transmission system with automatic switching system (mechanically controlled). 12 forward and 2 reverse speeds.
Axles	axle load: 12 tons, drive type: 10 \times 8, with disc brake.
Suspension	All axles with hydro-pneumatic suspension and automatic leveling system.
Steering	All-wheel variable steering system with 6 steering programs, Axles 1 and 2 are mechanically steered by the steering wheel. Axles 3, 4 and 5 are steered by the electro-hydraulic proportional control system.
Brake	It consists of service brake, parking brake (emergency brake) and auxiliary brake.
Tires	445/95R25 (basic configuration, without inner tube), 385/95R25 (optional).
Driver's cab	New cab with spacious room and man-machine friendly layout offers a comfortable operating experience. AC and heater.

MAIN TECHNICAL PARAMETERS

Item		Value	Remarks
Working performance	Max. rated lifting capacity	kg	220000
	Max. load moment of basic boom	kN.m	7408
	Max. load moment of main boom (fully extended)	kN.m	3155
	Max. lifting height of basic boom	Mm	13.5
	Max. lifting height of main boom	m	80
	Max. lifting height of jib	m	100/(110)
Working speeds	Max. hoist rope speed (Main winch)	m/min	125
	Max. hoist rope speed (Auxiliary winch)	m/min	70
	Boom derricking up time	s	65
	Boom extending time	s	750
	Max. slewing speed	r/min	1.5
Driving speeds	Max. height above sea level	m	2000
	Max. driving speed	km/h	80
	Max. gradeability	%	45
	Min. turning diameter	m	18.4
	Min. ground clearance	mm	270
	Limits for exhaust pollutants and smoke	Conform to related standards	GB3847-2005 GB17691-2005 (National Stage V)
Mass	Fuel consumption per hundred kilometers	L	78
	Deadweight in driving condition	kg	54900
	Complete vehicle kerb mass	kg	54705
	Axle load of I, II and III	kg	9450/9450/12000
	Axle load of IV and V	kg	12000/12000
Dimensions	Overall dimensions (L × W × H)	mm	16150×3000×4000
	Outrigger spread (L)	m	9.2
	Outrigger spread (W)	m	8.3(fully extended) 5.5 (intermediate extended)
	Main boom length	m	13.4 - 80
	Boom angle	°	-0.5 - 82
	Jib length	m	12, 20
	Jib + extension length	m	28, 36
	Offset	°	0, 15, 30
	Superlift device	Yes	Optional: Y-shaped guying system