

ZOOMLION CRAWLER CRANE ZCC1500V



ZOOMLION

Zoomlion Heavy Industry Science & Technology Co.,Ltd.

Add: No.677, Lugu Road, Zoomlion Industrial Park, Changsha, Hunan, China, 410205

Copyright©2021 Zoomlion. All rights reserved. Reproduction and copying of any part of contents is not allowed for any purposes without Zoomlion's approval.



Product specifications are subject to change without notice and obligation. The photographs and/or drawing in this document are for illustrative purposes only. Please consult your local ZOOMLION dealer for more information.
website:en.zoomlion.com 2021.01.26

ZOOMLION

VISION CREATES FUTURE

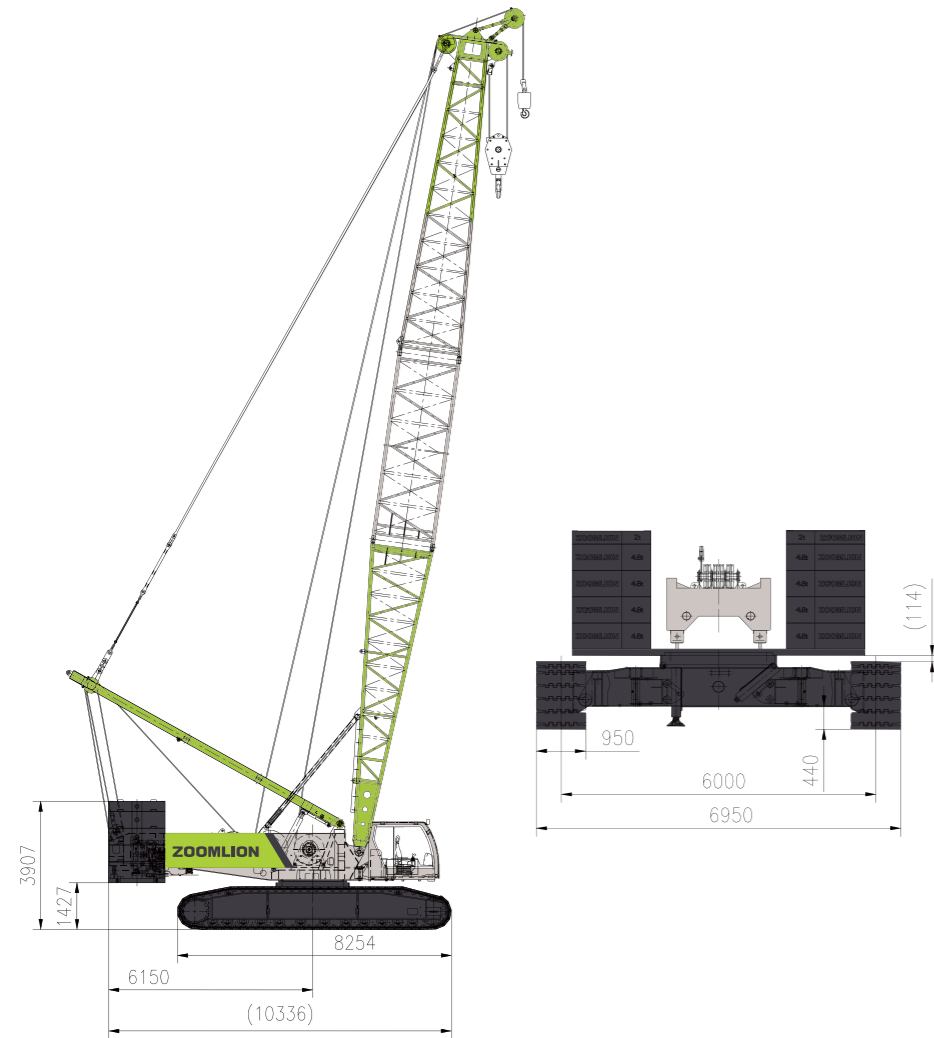
CONTENTS 目录

ZCC1500V	DEMENSIONS	01
ZCC1500V	TECHNICAL HIGHLIGHTS	01
ZCC1500V	DESCRIPTION ON BOOM COMBINATION	02
ZCC1500V	TECHNICAL PARAMETERS	03
ZCC1500V	TRANSPORT DIMENSIONS AND WEIGHTS	04/07
ZCC1500V	TECHNICAL DESCRIPTION	08/09
ZCC1500V	LIFTING PERFORMANCE	10/15



DEMENTSIONS

Overall dimensions of the crane



TECHNICAL HIGHLIGHTS

Superior lifting performance

- Track gauge of 6m; rear counterweight of 51.4t + central ballast of 16t.
- Its lifting performance is superior to other products of the same tonnage.

Optimization in transport and dismantling

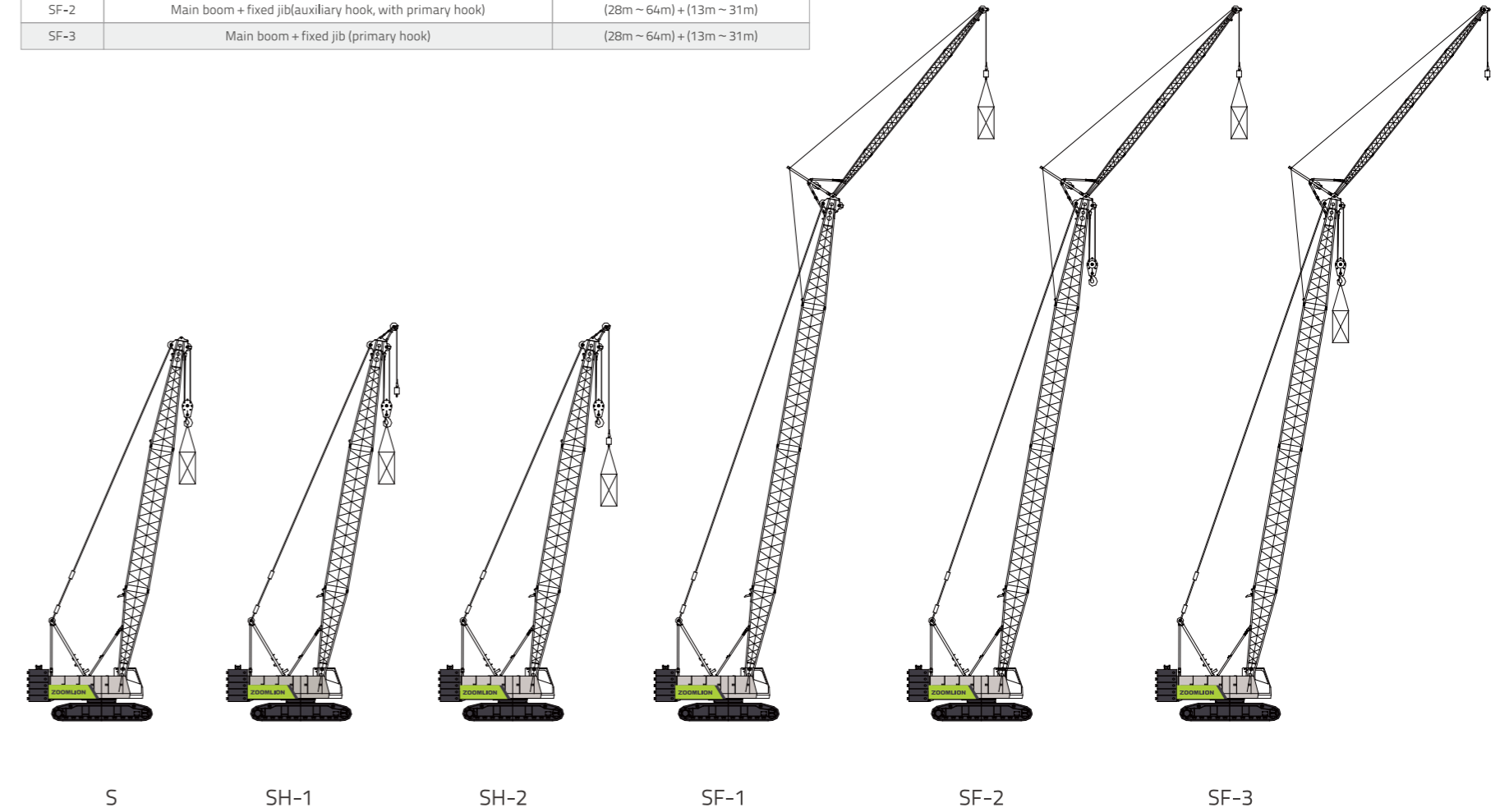
- The maximum weight of the basic machine in transport is 35t with a width of 3.0m.
- Self-mounting cylinder help to complete assembly and dismantling of track carriers and boom sections. The whole crane can be assembled within 6 hours with the help of the mounting cylinder.
- A single counterweight plate weighs 4.8t. The assembly can be accomplished by a small auxiliary hoisting equipment.

"Intelligent" equipment management

- An app on mobile phone is interconnected with the crane-mounted platform, realizing such functions as GPS positioning, monitoring of engine and lifting operation, monitoring and reminding of abnormality warning, remote diagnosis of fault, monitoring and auto-reminding of maintenance, data inquiry of overloading and normal operation.

DESCRIPTION ON BOOM COMBINATION

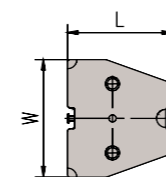
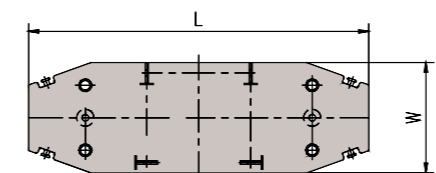
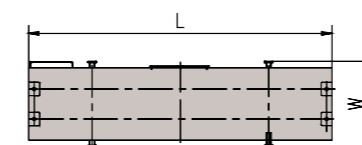
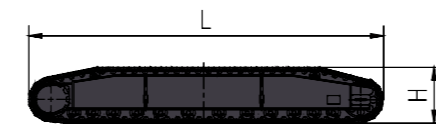
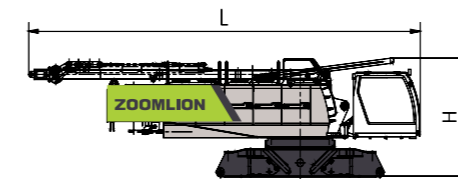
Code	Operating mode	Boom combination
S	Main boom	19m ~ 76m
SH-1	Main boom + tip boom (primary hook)	19m ~ 76m
SH-2	Main boom + tip boom (auxiliary hook)	19m ~ 76m
SF-1	Main boom + fixed jib(auxiliary hook, without primary hook)	(28m ~ 64m) + (13m ~ 31m)
SF-2	Main boom + fixed jib(auxiliary hook, with primary hook)	(28m ~ 64m) + (13m ~ 31m)
SF-3	Main boom + fixed jib (primary hook)	(28m ~ 64m) + (13m ~ 31m)



TECHNICAL PARAMETERS

Item	Unit	Values	Notes
Max. lifting moment	t×m	906.5	
Max. lifting capacity	t	150	
Max. lifting capacity of fixed jib	t	25.2	
Main boom length	m	19 ~ 76	
Fixed jib length	m	13 ~ 31	
Max. length of main boom + fixed jib	m	64 + 31	
Fixed jib angle	°	10, 30	
Single rope speed of H1	m/min	0 ~ 140	The 6 th layer
Single rope speed of H2	m/min	0 ~ 110	The 6 th layer
Single rope speed of derricking winch	m/min	0 ~ 66	The 5 th layer
Slewing speed	rpm	0 ~ 1.0	
Traveling speed	km/h	0 ~ 1.1	
Gradeability	%	30	
Average ground pressure of basic boom operating mode	MPa	0.1	
Dead weight of the crane	t	141	Basic boom with primary hook
Counterweight	t	51.4	
Overall dimensions (L×W×H)	mm	12460×3000×3270	With A-frame and main boom tilting-back support
Engine	Model	WP10G336E344	
	Rated power/rotational speed	kW/rpm	247/1900
	Max. output torque /rotational speed	Nm/rpm	1550/(1100 ~ 1400)
	Emission standard	/	National-III
Distance between two tracks × contact length of track × width of track pad	mm	6000×7205×950	

TRANSPORT DIMENSIONS AND WEIGHTS



Basic machine	1 piece*
Length(L)	12460 mm
Width (W)	3000 mm
Height (H)	3240 mm
Weight	35000 kg

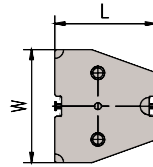
Track carrier assy	2 pieces*
Length(L)	8260 mm
Width (W)	1375 mm
Height (H)	1320 mm
Weight	15330 kg

Central ballast	2 pieces
Length(L)	4480 mm
Width (W)	1280 mm
Height (H)	580 mm
Weight	8000 kg

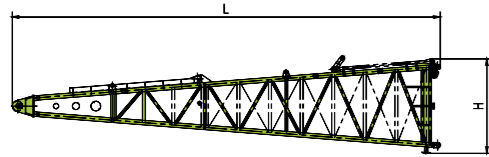
Counterweight base	1 piece
Length(L)	5170 mm
Width (W)	1700 mm
Height (H)	468 mm
Weight	8900 kg

Counterweight plate 1	8 piece
Length(L)	1500 mm
Width (W)	1700 mm
Height (H)	560 mm
Weight	4800 kg

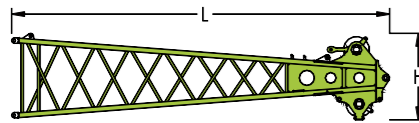
TRANSPORT DIMENSIONS AND WEIGHTS



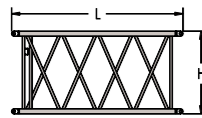
Counterweight plate 2	2 pieces
Length (L)	1500 mm
Width (W)	1700 mm
Height (H)	310 mm
Weight	2000 kg



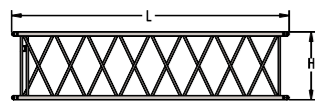
Main boom pivot section	1 piece*
Length (L)	9685 mm
Width (W)	2175 mm
Height (H)	2180 mm
Weight	1620 kg



Main boom head	1 piece
Length (L)	10175 mm
Width (W)	2120 mm
Height (H)	2300 mm
Weight	2200 kg

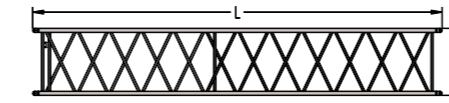


Main boom intermediate section of 3m	2 pieces*
Width (W)	3120 mm
Height (H)	2120 mm
Weight	1920 mm
	480 kg

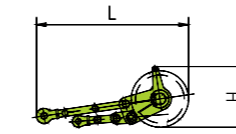


Main boom intermediate section of 6m	1 piece*
Length (L)	6120 mm
Width (W)	2120 mm
Height (H)	1920 mm
Weight	830 kg

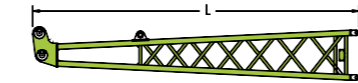
TRANSPORT DIMENSIONS AND WEIGHTS



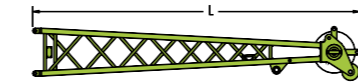
Main boom intermediate section of 9m	5 pieces*
Length(L)	9120 mm
Width (W)	2120 mm
Height (H)	1920 mm
Weight	1180 kg



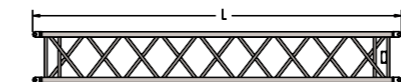
Tip boom	1 piece
Length(L)	1600 mm
Width (W)	920 mm
Height (H)	650 mm
Weight	165 kg



Fixed jib pivot section	1 piece*
Length(L)	6665 mm
Width (W)	960 mm
Height (H)	760 mm
Weight	325 kg

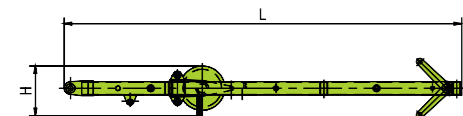


Fixed jib head	1 piece*
Length(L)	6930 mm
Width (W)	960 mm
Height (H)	800 mm
Weight	430 kg

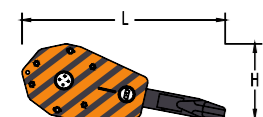


Fixed jib intermediate section of 6m	3 pieces*
Length(L)	6060 mm
Width (W)	960 mm
Height (H)	860 mm
Weight	240 kg

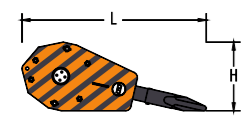
TRANSPORT DIMENSIONS AND WEIGHTS



FA-frame	1 piece*
Length (L)	5280 mm
Width (W)	900 mm
Height (H)	680 mm
Weight	495 kg



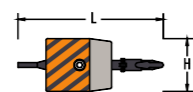
Load hook for 160t	1 piece*
Length (L)	2180 mm
Width (W)	810mm
Height (H)	990 mm
Weight	2340 kg



Load hook for 80t	1 piece*
Length (L)	1900 mm
Width (W)	810 mm
Height (H)	765 mm
Weight	1710 kg



Load hook for 30t	1 piece*
Width (W)	1630 mm
Height (H)	780 mm
Weight	630 mm
	1090 kg



Load hook for 13.5t	1 piece*
Width (W)	970mm
Height (H)	390mm
Weight	390mm
	460kg

Notes:

1. Components are presented in diagrammatic drawings that are not drawn to scale. Length is a boundary dimension.
2. Weight of packaging is not counted in the weight above, which might be different from the actual weight due to manufacturing error.
3. There might be improvements made on components listed above, resulting modifications in dimensions and weight. Actual products to be delivered shall prevail.
4. Numbers of components marked * are determined by the actual need.

TECHNICAL DESCRIPTION



Engine

Weichai electronic-injection diesel engine: WP10G336E344
 Rated power / rotational speed: 247kW/1900r/min
 Maximum output torque / rotational speed: 1550Nm/1100~1400r/min
 Emission standard: National III (non-road)
 Volume of fuel oil tank: 700L (guarantee sufficient working hours).



Hydraulic system

Hydraulic pump: two plunger pumps of famous brand; energy-saving, stable and reliable; it drives winches and the traveling mechanism; the triple gear pump is used for slewing, auxiliary operations and the dissipation of the hydraulic system.
 Control system: a pilot proportional control hydraulic system with a load feedback system; two cross-shaped hydraulic joysticks and a dual foot-operated traveling control valve are used for controlling different executive components.
 Volume of ydraulic oil tank: 850L.



Hoisting winch

Both the primary and the secondary hoisting winches are driven by an axial hydraulic variable-displacement piston motor through a built-in planetary reducer. Braking of the spring on winch motor is controlled by the balancing valve. The drum with a double-rope groove guarantees that rope of multiple layers will not intertwine together.

	H1	H2
Rated single rope tension	13.5t (the 4 th layer)	13.5t (the 4 th layer)
Wire rope diameter	26mm	26mm
Wire rope length	355m	250m
Single rope speed	140m/min (the 6 th layer)	110m/min (the 6 th layer)



Derricking mechanism

He derricking winch is driven by an axial piston motor through a built-in planetary reducer and brakes through the spring on the motor end.
 Cable drum lock: The winch is locked by ratchet wheel and ratchet pawl.

	Derricking mechanism
Rated single rope tension	99.5kN (the 2 nd layer)
Wire rope diameter	22mm
Wire rope length	255m
Single rope speed	66m/min (the 5 th layer)



Swing

The slewing mechanism is composed of dual hydraulic motors, dual slewing reducers, control valves and a slewing bearing. Small gear of the output shaft rotates around the slewing bearing ring fixed on the chassis so that the slewing table makes slewing movement of 360°.



Traveling mechanism

The traveling mechanism adopts dual motors and dual reducers. It is able to make such movements as traveling in a straight line, unilateral steering, differential steering, pivot steering and traveling with a load with high maneuverability and flexibility.
 Traveling speed: 0~1.1km/h
 Gradeability: 30%
 Tensioning of track: The track is tensioned by a jack, which is convenient and reliable.

TECHNICAL DESCRIPTION



Boom system

Main boom length ranges between 19m and 76m. Components of a main boom are: a pivot section of 9.5m, a boom head of 9.5m, intermediate sections of 3m, 6m and 9m, and a tip boom.

Main boom length (m)	Combination of boom sections
19	9.5+9.5
22	9.5+3+9.5
25	9.5+6+9.5
28	9.5+9+9.5
31	9.5+3+9+9.5
34	9.5+6+9+9.5
37	9.5+3+6+9+9.5
40	9.5+3+9×2+9.5
43	9.5+6+9×2+9.5
46	9.5+3+6+9×2+9.5
49	9.5+3+9×3+9.5
52	9.5+6+9×3+9.5
55	9.5+3+6+9×3+9.5
58	9.5+3+9×4+9.5
61	9.5+6+9×4+9.5
64	9.5+3+6+9×4+9.5
67	9.5+3+9×5+9.5
70	9.5+6+9×5+9.5
73	9.5+3+6+9×5+9.5
76	9.5+3×2+6+9×5+9.5



Fixed jib

Fixed jib length ranges between 13m and 31m. Components of a fixed jib are: a pivot section of 6m, a jib head of 6.5m and an intermediate section of 6m. The main boom length ranges between 28m and 64m if a fixed jib is assembled on.

Fixed jib length (m)	Combination of jib sections
13	6.5+6.5
19	6.5+6+6.5
25	6.5+6×2+6.5
31	6.5+6×3+6.5



Operator's cab

The steel structure operator's cab is 1250mm in width with tempered glasses around. It provides broad visions, which can be pitched up for 20° through the cab-pitching cylinder controlled by a switch in the cab.

A cold/warm air conditioner; a radio; a color display of 10.4.

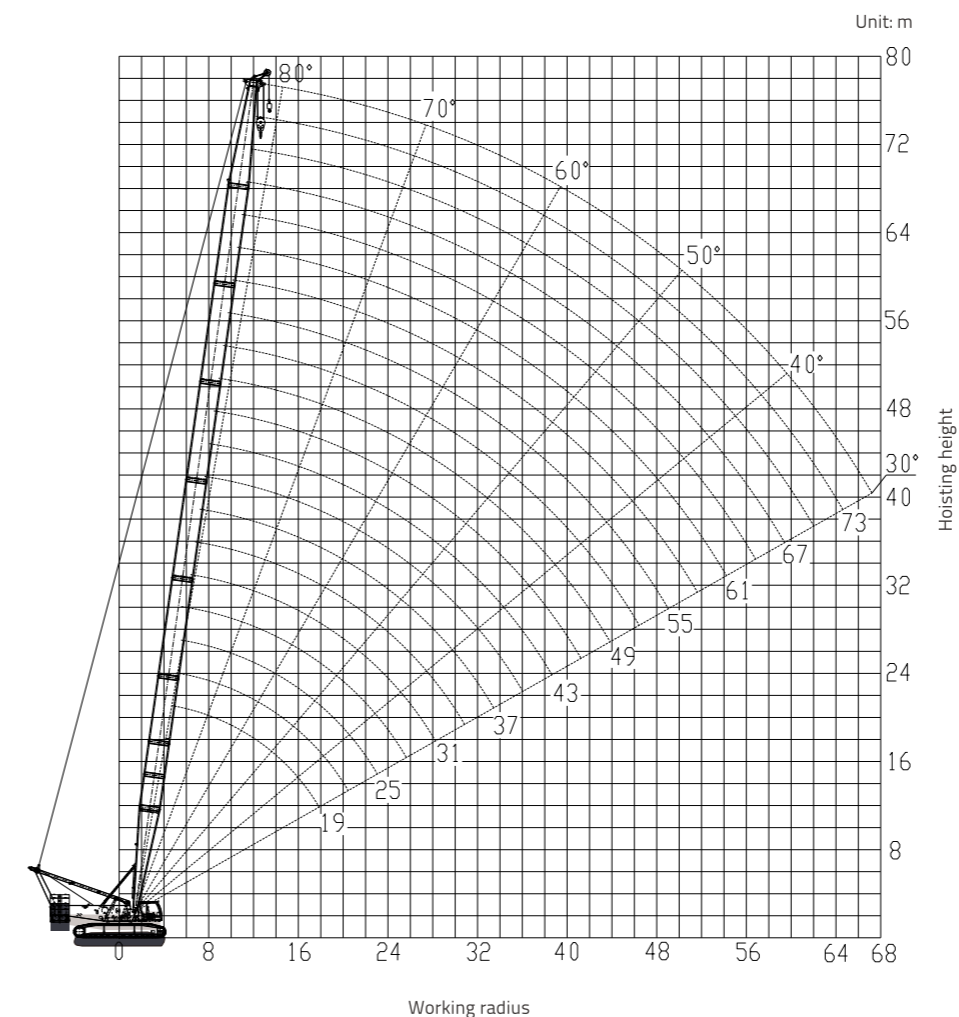


Load hook

Specification of hook	Lifting capacity (Kg)	Number of pulleys
160 t	2340	7
80 t	1710	3
30 t	1090	1
12.5 t	460	0

LIFTING PERFORMANCE

Curves of hoisting height (S)



Lifting capacity chart (S)

Radius(m)	Main boom length (m)																							
	19	22	25	28	31	34	37	40	43	46	49	52	55	58	61	64	67	70	73	76				
5	150.0																							
6	145.0	145.0	135.0																					
7	129.5	126.5	118.0	114.0	110.0	104.0																		
8	104.0	103.0	101.0	97.6	94.7	91.8	89.0	86.3																
9	86.1	86.1	86.2	84.9	82.8	80.6	78.4	76.3	74.3	70.5	67.2													
10	73.3	73.3	73.4	73.3	72.7	71.7	70.0	68.3	66.6	65.0	63.5	58.2	55.4											
12	56.3	56.3	56.3	56.3	56.3	56.2	56.1	55.3	54.7	53.8	52.7	51.5	50.4	48.1	46.9	43.9	39.7	36.5						
14	45.5	45.5	45.5	45.4	45.4	45.3	45.3	45.1	45.1	44.6	44.1	43.5	43.0	42.2	40.5	39.2	37.2	35.1	33.6	30.4				
16	37.9	38.0	38.0	37.9	37.9	37.8	37.7	37.6	37.6	37.4	37.3	37.0	36.5	36.0	35.6	35.1	33.9	32.6	31.9	29.3				
18	32.4	32.5	32.5	32.4	32.4	32.3	32.2	32.1	32.0	31.9	31.8	31.6	31.6	31.2	30.8	30.4	30.0	29.4	28.7	27.4				
20		28.2	28.2	28.2	28.1	28.0	27.9	27.8	27.7	27.5	27.4	27.3	27.2	27.0	26.7	26.3	25.9	25.4	24.8					
22			24.9	24.8	24.9	24.8	24.7	24.5	24.5	24.3	24.2	24.1	24.0	23.8	23.7	23.5	23.3	23.0	22.6	22.1				
24				22.1	22.2	22.0	22.0	21.8	21.8	21.6	21.5	21.3	21.3	21.1	21.0	20.8	20.7	20.5	20.2	19.8				
26				19.9	19.9	19.8	19.7	19.6	19.5	19.4	19.3	19.1	19.0	18.9	18.7	18.6	18.5	18.3	18.2	17.9				
28					18.0	17.9	17.8	17.7	17.7	17.5	17.4	17.2	17.1	17.0	16.8	16.7	16.6	16.4	16.3	16.1				
30						16.3	16.2	16.1	16.0	15.9	15.8	15.6	15.5	15.4	15.2	15.1	15.0	14.8	14.7	14.5				
32							14.8	14.7	14.7	14.5	14.4	14.2	14.1	14.0	13.8	13.7	13.6	13.4	13.3	13.1				
34								13.5	13.4	13.3	13.2	13.0	12.9	12.8	12.6	12.5	12.4	12.2	12.1	11.9				
36									12.4	12.4	12.2	12.1	12.0	11.9	11.7	11.6	11.4	11.3	11.1	11.0	10.8			
38										11.4	11.3	11.2	11.0	10.9	10.8	10.6	10.5	10.4	10.2	10.1	9.9			
40											10.4	10.3	10.2	10.1	9.9	9.8	9.6	9.5	9.3	9.2	9.0			
42												9.6	9.4	9.3	9.2	9.0	8.9	8.8	8.6	8.4	8.3			
44													8.9	8.7	8.6	8.5	8.3	8.2	8.1	7.9	7.8	7.6		
46														8.1	8.0	7.9	7.7	7.6	7.5	7.3	7.1	7.0		
48															7.4	7.3	7.2	7.0	6.9	6.7	6.6	6.4		
50																6.8	6.6	6.5	6.4	6.2	6.1	5.9		
52																	6.3	6.2	6.0	5.9	5.7	5.6	5.4	
54																		5.7	5.5	5.5	5.3	5.1	5.0	
56																			5.1	5.0	4.9	4.7	4.6	
58																				4.7	4.5	4.4	4.2	
60																					4.1	4.0	3.8	
62																						3.8	3.7	3.5
64																							3.4	3.2
66																								2.9
Reeving	12	12	11	10	9	8	7	7	6	6	5	5	5	4	4	4	3	3	3	3	3	3	3	

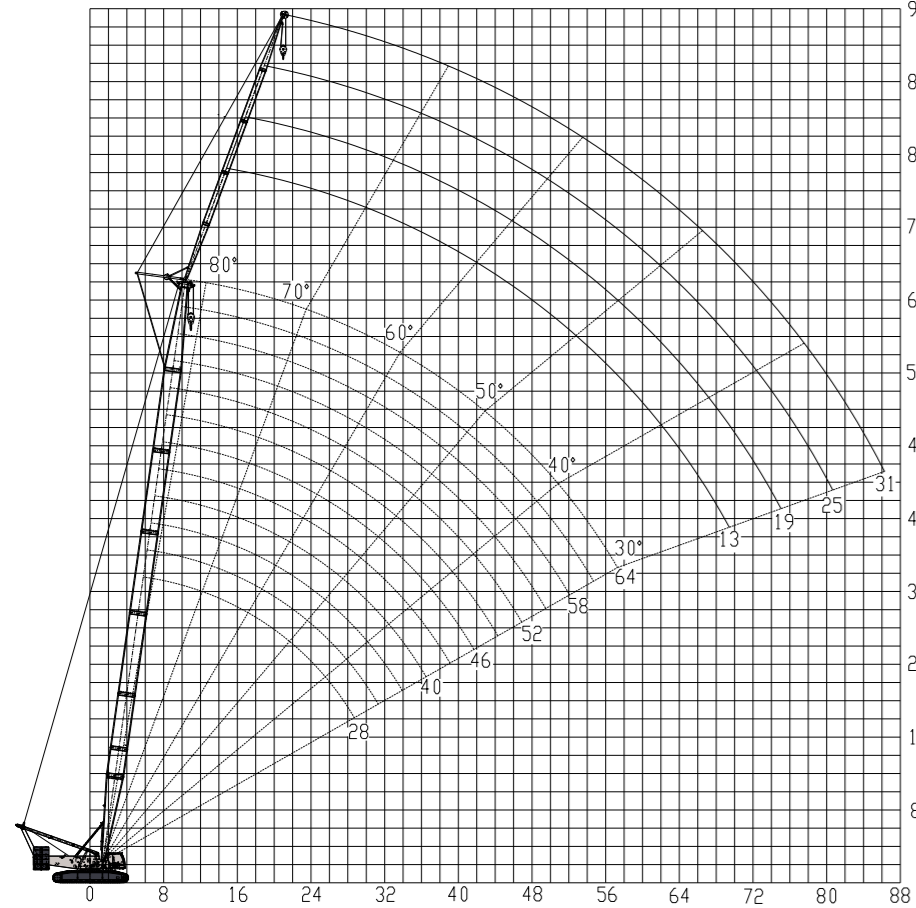
Notes:

- For tip boom operating mode, the lifting capacity is the main boom lifting capacity of the same radius, which shall not exceed 13.5t.
- The main boom and the tip boom cannot be used simultaneously if a tip boom is assembled on.
- Lifting capacities of the main boom with a tip boom on are the same with those of a main boom without a tip boom.

LIFTING PERFORMANCE

Operating mode of main boom + fixed jib
Curves of hoisting height (SF-1), 10°

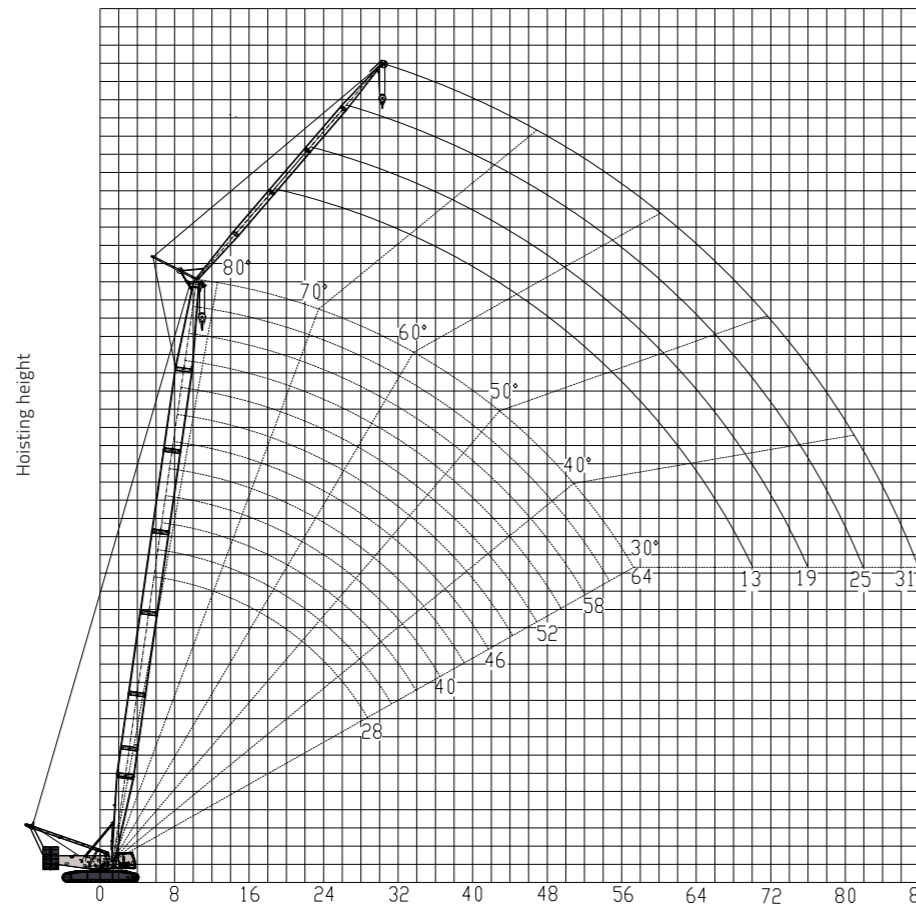
Unit: m



Working radius

Operating mode of main boom + fixed jib
Curves of hoisting height (SF-1), 30°

Unit: m



Working radius

LIFTING PERFORMANCE

Lifting capacity chart (SF-1, 1/8)

Unit: t

Radius (m)	Fixed jib length: 13m; included angle between main boom and fixed jib : 10°															
	Main boom length (m)															
	28	31	34	37	40	43	46	49	52	55	58	61	64			
10	25.2	25.1														
12	23.6	24	23.9	24	23.3	22.9	23.9									
14	23.4	24	23.9	23.3	22.8	22.9	23.9	24.3	22.9	23.2	24.2	23.9				
16	21.9	23.3	22.7	23.3	21.7	22.9	23.9	24.2	22.8	22.4	24.2	23.9	24.1			
18	21.6	21.2	22.7	23.3	21.7	22.1	23.6	23.9	22.3	22.4	22.1	23.8	23.1			
20	21.6	21.2	22.7	22.5	21.7	22.1	23.6	23.9	22.3	22.4	22.1	21.5	21.7			
22	20.7	20.5	20.6	22.5	21.7	21.1	21.7	22.3	22.3	21.2	22.1	21.3	21.7			
24	20.7	20.5	20.6	22	21	20.7	21.7	21.6	20.7	21.2	20.7	20.9	20.6			
26	19.5	19.7	19.8	19.8	19.7	19.6	19.4	19.3	19.1	19	18.9	18.7	18.6			
28	18.3	18.2	18.1	17.9	17.8	17.7	17.5	17.4	17.2	17.1	16.9	16.8	16.7			
30	16.7	16.6	16.4	16.3	16.1	16	15.9	15.8	15.6	15.5	15.3	15.2	15			
32	15.3	15.2	15	14.9	14.7	14.6	14.5	14.3	14.2	14.1	13.9	13.8	13.6			
34	14	14	13.8	13.7	13.5	13.4	13.3	13.1	13	12.8	12.7	12.5	12.4			
36	13	12.9	12.7	12.6	12.4	12.3	12.2	12	11.9	11.8	11.6	11.5	11.3			
38	12	11.9	11.8	11.7	11.5	11.4	11.2	11.1	10.9	10.8	10.6	10.5	10.3			
40		11.1	10.9	10.8	10.6	10.5	10.4	10.2	10.1	9.9	9.8	9.6	9.5			
42			10.1	10	9.9	9.8	9.6	9.5	9.3	9.2	9	8.9	8.7			
44				9.3	9.2	9.1	8.9	8.8	8.6	8.5	8.3	8.2	8			
46					8.7	8.5	8.4	8.3	8.1	8	7.8	7.7	7.5	7.4		
48						7.9	7.8	7.7	7.6	7.4	7.3	7.1	7	6.8		
50							7.3	7.2	7	6.9	6.7	6.6	6.4	6.3		
52								6.7	6.5	6.4	6.3	6.1	6	5.8		
54									6.1	5.9	5.8	5.6	5.5	5.3		
56										5.7	5.5	5.4	5.2	4.9		
58											5.1	5	4.8	4.7	4.5	
60												4.6	4.5	4.3	4.2	
62													4.1	4	3.8	
64														3.8	3.7	3.5
66															3.4	3.2
68																2.9
Reeving	2	2	2	2	2	2	2	2	2	2	2	2	2	2	2	2

Note:
Data in the table below are provided when the main boom is operated with a hook.

Lifting capacity chart (SF-1, 2/8)

Unit: t

Radius (m)	Fixed jib length: 19m; included angle between main boom and fixed jib : 10°															
	Main boom length (m)															
	28	31	34	37	40	43	46	49	52	55	58	61	64			
12	16	16.3														
14	15.6	15.7	16.1	17.2	16.9	16.1	16.2									
16	15.6	15.7	15.3	16.9	16.9	16.1	16	17.3	16.3	16.5	15.7	16.2				
18	14.9	15.6	15.3	16.2	16.8	15.7	15.5	16.3	16.1	16.5	15.7	16.2	15.9			
20	14.5	14.7	15.3	15	15.9	15.1	14.7	15.2	16.1	16.5	15.7	15.3	15.4			
22	14.5	14.7	15.3	15	14.7	15.1	14.7	15.2	14.9	14.6	15.7	15.3	14.8			
24	14	14.2	14.2	14.9	14.7	14.6	14.3	14.3	14.9	14.6	15.7	15.3	14.8			
26	13.8	14.2	14	13.9	14.5	14.5	14.3	14.3	14.6	14.6	15.1	15.3	14.8			
28	13.8	13.3	14	13.8	13.5	13.9	13.9	13.8	13.9	14.4	15.1	15.3	14.8			
30	13.7	13.3	14	13.8	13.5	13.9	13.9	13.8	13.9	14.4	15.1	14.8	14.8			
32	13.4	13.3	13.9	13	13.5	13.9	13.4	13.5	13.9	14.3	14.1	13.8	13.9			
34	12.6	12.9	12.8	13	12.9	13.6	13.1	13.3	13.2	13.1	12.9	12.8	12.6			
36	12.1	12.9	12.8	12.6	12.7	12.5	12.4	12.2	12.1	12	11.8	11.7	11.5			
38	12.1	12.1	12	11.9	11.7	11.6	11.4	11.3	11.1	11	10.9	10.7	10.6			
40	11.4	11.3	11.1	11	10.8	10.7	10.6	10.4	10.3	10.1	10	9.8	9.7			
42	10.6	10.5	10.4	10.2	10.1	10	9.8	9.7	9.5	9.4	9.2	9.1	8.9			
44	9.9	9.8	9.7	9.5	9.4	9.3	9.1	9	8.8	8.7	8.5	8.4	8.2			
46		9.2	9	8.9	8.7	8.6	8.5	8.3	8.2	8	7.9	7.7	7.6			
48			8.4	8.3	8.2	8	7.9	7.7	7.6	7.5	7.3	7.2	7			
50				7.8	7.6	7.5	7.4	7.2	7.1	6.9	6.8	6.6	6.5			
52					7.1	7	6.9	6.7	6.6	6.4	6.3	6.1	6			
54						6.7	6.6	6.4	6.3	6.1	6	5.8	5.7	5.5		
56							6.1	6	5.8	5.7	5.6	5.4	5.3	5.1		
58								5.6	5.5	5.3	5.2	5	4.9	4.7		
60									5.1	4.9	4.8	4.7	4.5	4.3		
62										4.7	4.6	4.5	4.3	4.2	4	
64											4.3	4.1	4	3.8	3.7	
66												3.8	3.7	3.5	3.4	
68													3.4	3.3	3.1	
70														3	2.8	
72															2.7	2.6
74																2.3
Reeving	2	2	2	2	2	2	2	2	2	2	2	2	2	2	2	2

LIFTING PERFORMANCE

Lifting capacity chart (SF-1, 3/8)

Unit: t

Fixed jib length: 25m; included angle between main boom and fixed jib : 10°															
Radius (m)	Main boom length (m)														
	28	31	34	37	40	43	46	49	52	55	58	61	64		
14	10.5	10.5	10.9												
16	10	10.2	10.8	10.8	10.4	10.5	10.3	10.8							
18	10	9.8	10.5	10.6	10	10	10.3	10.8	10.6	10	10.4	10.4			
20	9.3	9.8	10	10.1	9.6	10	9.8	10.8	10.1	10	10.1	10.4	9.9		
22	9.3	9.2	9.4	9.5	9.6	9.7	9.8	10.6	9.6	10	9.7	9.8	9.9		
24	9.1	8.9	9.3	9.5	9.2	9.7	9.8	10.2	9.6	10	9.7	9.8	9.9		
26	8.8	8.9	9	9.5	9.1	9.7	9.5	9.7	9.2	9.2	9.7	9.8	9.8		
28	8.8	8.9	8.5	9.2	8.9	9.4	9.1	9	9.2	9.2	9.1	9.8	9.8		
30	8.6	8.5	8.4	8.5	8.9	8.9	9.1	9	9.2	9.2	9.1	9.8	9.6		
32	7.9	8.4	8.4	8.4	8.4	8.9	8.7	9	9	9.1	9.1	9.5	9.6		
34	7.9	7.8	8	8.4	8.2	8.9	8.5	9	8.6	9.1	9.1	9	8.9		
36	7.8	7.8	8	8	8.2	8.5	8.2	8.6	8.6	8.5	9.1	9	8.9		
38	7.6	7.7	7.9	8	8.2	8.5	8.2	8.6	8.6	8.5	9	8.7	8.8		
40	7.4	7.4	7.7	8	7.8	8.3	8.2	8.6	8	8.2	8.4	8.7	8.4		
42	7.2	7.4	7.6	7.8	7.6	7.8	7.9	8.4	8	8.2	8.4	8.7	8.4		
44	7	7.2	7.3	7.3	7.6	7.8	7.9	7.7	7.9	8.2	8.4	8.4	8.4		
46	6.9	6.9	7.2	7.3	7.6	7.5	7.6	7.7	7.8	8.2	8.1	7.9	7.8		
48	6.7	6.9	7.1	7.2	7.3	7.5	7.5	7.7	7.7	7.6	7.5	7.3	7.2		
50		6.8	6.9	7.1	7.2	7.3	7.5	7.4	7.2	7.1	6.9	6.8	6.6		
52		6.7	6.8	6.9	7.1	7.2	7	6.9	6.7	6.6	6.4	6.3	6.1		
54			6.7	6.8	6.8	6.7	6.6	6.4	6.3	6.1	6	5.8	5.7		
56				6.6	6.4	6.3	6.1	6	5.9	5.7	5.6	5.4	5.3		
58					6	5.9	5.8	5.6	5.5	5.3	5.2	5	4.9		
60					5.6	5.5	5.4	5.3	5.1	5	4.8	4.7	4.5		
62						5.2	5	4.9	4.8	4.6	4.5	4.3	4.2		
64							4.7	4.6	4.4	4.3	4.1	4	3.8		
66								4.3	4.1	4	3.8	3.7	3.5		
68									3.8	3.7	3.6	3.4	3.3		
70										3.6	3.5	3.3	3		
72											3.2	3	2.9	2.7	
74												2.8	2.7	2.5	
76													2.4	2.3	
78														2.2	2.1
80															1.8
Reeving	1	1	1	1	1	1	1	1	1	1	1	1	1	1	1

Lifting capacity chart (SF-1, 4/8)

Unit: t

Fixed jib length: 31m; included angle between main boom and fixed jib : 10°																
Radius (m)	Main boom length (m)															
	28	31	34	37	40	43	46	49	52	55	58	61	64			
16	7.1	7.4	7.5													
18	6.9	7.2	7.2	7.3	7.1	7.7	7.3	7.5								
20	6.9	6.9	6.9	7.2	7.1	6.9	7	7.5	7.3	7.4	7.6	7.5	7.3			
22	6.6	6.9	6.9	6.7	7.1	6.7	7	6.9	7	6.9	7.3	7.5	7.3			
24	6.5	6.5	6.5	6.7	7	6.7	6.8	6.9	6.7	6.9	7	6.8	7.3			
26	6.3	6.4	6.4	6.6	6.8	6.7	6.8	6.7	6.7	6.9	6.6	6.8	6.8			
28	5.9	6.1	6.2	6.3	6.5	6.3	6.3	6.6	6.5	6.8	6.6	6.7	6.8			
30	5.8	5.9	6.1	6	6.1	6.3	6.2	6.3	6.5	6.7	6.4	6.6	6.5			
32	5.5	5.7	5.8	6	6.1	6.2	6.1	6.3	6.5	6.4	6.4	6.4	6.5			
34	5.3	5.5	5.6	5.7	5.9	6	6.1	6.1	6.3	6.1	6.4	6.4	6.5			
36	5.1	5.3	5.4	5.5	5.7	5.8	5.9	6	6.1	6.1	6.3	6.4	6.5			
38	5	5.1	5.2	5.3	5.5	5.6	5.7	5.8	5.9	5.9	6.1	6	6.3			
40	4.8	4.9	5.1	5.2	5.3	5.4	5.5	5.6	5.7	5.9	6	6	6.1			
42	4.6	4.8	4.9	5	5.1	5.3	5.4	5.4	5.6	5.7	5.8	5.9	6			
44	4.5	4.6	4.8	4.9	5	5.1	5.2	5.3	5.4	5.5	5.6	5.7	5.7			
46	4.4	4.5	4.6	4.8	4.9	5	5.1	5.2	5.3	5.4	5.5	5.6	5.7			
48	4.3	4.4	4.5	4.6	4.7	4.8	5	5.1	5.1	5.3	5.3	5.4	5.5			
50	4.1	4.3	4.4	4.5	4.6	4.7	4.8	4.9	5	5.1	5.2	5.3	5.4			
52	4.1	4.2	4.3	4.4	4.5	4.6	4.7	4.8	4.9	5	5.1	5.2	5.3			
54	4	4.1	4.2	4.3	4.4	4.5	4.6	4.7	4.8	4.9	5	5.1	5.1			
56		4	4.1	4.2	4.3	4.4	4.5	4.6	4.7	4.8	4.9	5	5.1			
58			4	4.1	4.2	4.3	4.4	4.5	4.6	4.7	4.8	4.9	4.9			
60				3.9	4	4.1	4.2	4.3	4.4	4.5	4.6	4.7	4.8	4.6		
62					3.9	4	4.1	4.2	4.3	4.4	4.5	4.6	4.4	4.3		
64						4	4.1	4.1	4.2	4.3	4.4	4.3	4.1	4		
66							4	4.1	4.1	4.2	4.1	4	3.8	3.7		
68								3.9	4	4.1	4	3.8	3.7	3.5	3.4	
70									3.9	3.8	3.7	3.6	3.4	3.3	3.1	
72										3.6	3.4	3.3	3.2	3	2.8	
74											3.2	3.1	2.9	2.8	2.6	
76												3	2.8	2.7	2.5	2.4
78													2.6	2.5	2.3	2.2
80														2.3	2.1	2
82															1.9	1.8
84																1.6
86																1.4
Reeving	1	1	1	1	1	1	1	1	1	1	1	1	1	1	1	1

LIFTING PERFORMANCE

Lifting capacity chart (SF-1, 5/8)

Unit: t

Fixed jib length: 13m; included angle between main boom and fixed jib : 30°																
Radius (m)	Main boom length (m)															
	28	31	34	37	40	43	46	49	52	55	58	61	64			
14	20	21.2														
16	20	21.1	20	19.8	21.1	21.6	20.1									
18	19.3	19.8	20	19.8	20.8	19.2	20.1	20.4	19.4	22	21.8	19.8				
20	19.3	19.5	19.1	19.7	19.5	19.2	19.2	20.1	18.9	19.3	21.8	19	20.8			
22	19.3	19.5	19.1	19.7	19.5	19.2	19.2	20.1	18.9	19.3	21.7	19	20.1			
24	18.9	18.6	19.1	18.6	19.5	19.2	19.2	20.1	18.9	19.3	20.7	19	20.1			
26	18.6	18.6	19.1	18.6	19.5	19.2	19.2	19	18.5	18.4	19.1	19	19.3			
28	18.6	18.5	18.4	18.3	18.2	18.1	18	17.9	17.8	17.7	17.6	17.5	17.3			
30	16.9	16.9	16.8	16.7	16.5	16.4	16.3	16.2	16.1	16	15.9	15.8	15.6			
32	15.5	15.4	15.3	15.2	15.1	15	14.9	14.8	14.6	14.5	14.4	14.3	14.2			
34	14.2	14.2	14.1	14	13.8	13.7	13.6	13.5	13.4	13.3	13.1	13	12.9			
36	13.1	13	12.9	12.8	12.7	12.6	12.5	12.4	12.3	12.1	12	11.9	11.8			
38	12.1	12	11.9	11.8	11.7	11.6	11.5	11.4	11.3	11.1	11	10.9	10.8			
40		11.1	11	11	10.8	10.7	10.6	10.5	10.4	10.3	10.1	10	9.9			
42			10.2	10.1	10	9.9	9.8	9.7	9.6	9.5	9.3	9.2	9.1			
44				9.5	9.4	9.3	9.2	9.1	9	8.8	8.7	8.6	8.5	8.3		
46					8.7	8.6	8.6	8.4	8.3	8.2	8.1	7.9	7.8	7.7		
48						8	7.9	7.8	7.7	7.6	7.5	7.3	7.2	7.1		
50							7.4	7.3	7.2	7	6.9	6.8	6.7	6.5		
52								6.9	6.7	6.6	6.5	6.4	6.3	6.2	6	
54									6.3	6.2	6	5.9	5.8	5.7	5.5	
56										5.7	5.6	5.5	5.4	5.2	5.1	
58											5.2	5.1	5	4.8	4.7	
60												4.7	4.6	4.4	4.3	
62													4.3	4.2	4.1	3.9
64														3.9	3.8	3.6
66															3.4	3.3
68																3
70																2.7
72																
74																
76																
78																
80																
82																
84																
86																
Reeving	2	2	2	2	2	2	2	2	2	2	2	2	2	2	2	2

Lifting capacity chart (SF-1, 6/8)

Unit: t

LIFTING PERFORMANCE

Lifting capacity chart (SF-1, 7/8)

Unit: t

Fixed jib length: 25m; included angle between main boom and fixed jib : 30°													
Radius (m)	Main boom length (m)												
	28	31	34	37	40	43	46	49	52	55	58	61	64
22	8.3	8.1	8.1	8.5									
24	7.9	8	8.1	8.1	8.2	8.2	8	8.6					
26	7.8	7.7	8.1	8.1	8.2	8.1	8	7.9	8	7.9	8.3	8	8.6
28	7.7	7.7	7.9	8	7.7	8.1	8	7.8	7.7	7.9	8.3	8	7.9
30	7.5	7.4	7.7	7.8	7.6	7.9	8	7.8	7.7	7.9	8.2	7.8	7.9
32	7.3	7.3	7.5	7.6	7.6	7.7	7.7	7.8	7.6	7.6	8	7.8	7.8
34	7.2	7.3	7.4	7.4	7.5	7.6	7.7	7.8	7.6	7.4	7.6	7.8	7.6
36	7	7.1	7.2	7.3	7.4	7.4	7.5	7.3	7.5	7.4	7.6	7.4	7.6
38	6.9	6.9	6.9	7.2	7.2	7.3	7.4	7.3	7.2	7.4	7.2	7.3	7.6
40	6.8	6.9	6.9	7	7.1	7.2	7.3	7.2	7.2	7.4	7.2	7.3	7.6
42	6.7	6.8	6.8	6.9	6.9	7.1	7.2	7.2	7.2	7.3	7.2	7.3	7.2
44	6.6	6.7	6.8	6.7	6.9	7	6.9	7.1	7.1	7.2	7.2	7.3	7.2
46	6.6	6.6	6.7	6.7	6.8	6.9	6.9	6.8	7.1	7.2	7.2	7.3	7.2
48	6.6	6.6	6.6	6.7	6.7	6.7	6.9	6.8	7	7.1	7.1	7.2	7.2
50	6.6	6.6	6.6	6.6	6.7	6.7	6.8	6.8	6.9	6.9	6.9	6.8	7.2
52		6.6	6.6	6.6	6.6	6.7	6.7	6.8	6.8	6.8	6.9	6.8	6.7
54			6.6	6.6	6.6	6.6	6.7	6.6	6.6	6.5	6.4	6.3	6.2
56			6.6	6.6	6.6	6.5	6.4	6.3	6.2	6.1	6	5.8	5.7
58				6.3	6.2	6.1	6	5.9	5.8	5.7	5.5	5.4	5.3
60					5.8	5.7	5.6	5.5	5.4	5.3	5.1	5	4.9
62						5.3	5.2	5.1	5	4.9	4.8	4.7	4.5
64						4.9	4.8	4.8	4.6	4.5	4.4	4.3	4.2
66							4.5	4.4	4.3	4.2	4.1	4	3.8
68								4.1	4	3.9	3.8	3.7	3.5
70									3.7	3.6	3.5	3.4	3.2
72										3.3	3.2	3.1	3
74										3	2.9	2.8	2.7
76											2.7	2.6	2.4
78												2.3	2.2
80													2
82													1.7
Reeving	1	1	1	1	1	1	1	1	1	1	1	1	1

Lifting capacity chart (SF-1, 8/8)

Unit: t

Fixed jib length: 31m; included angle between main boom and fixed jib : 30°													
Radius (m)	Main boom length (m)												
	28	31	34	37	40	43	46	49	52	55	58	61	64
26	5.2	5.3	5.3	5.3									
28	5	5.1	5.1	5.2	5.2	5.2	5.3	5.3	5.3				
30	4.9	4.9	5	5	5.1	5.1	5.1	5.2	5.2	5.2	5.3	5.3	5.3
32	4.7	4.8	4.8	4.9	4.9	5	5	5	5.1	5.1	5.2	5.2	5.2
34	4.6	4.6	4.7	4.8	4.8	4.9	4.9	4.9	5	5	5	5.1	5.1
36	4.5	4.5	4.6	4.6	4.7	4.8	4.8	4.8	4.9	4.9	4.9	5	5
38	4.4	4.4	4.5	4.5	4.6	4.6	4.7	4.7	4.8	4.8	4.9	4.9	4.9
40	4.3	4.3	4.4	4.4	4.5	4.5	4.6	4.6	4.7	4.7	4.8	4.8	4.8
42	4.2	4.2	4.3	4.3	4.4	4.5	4.5	4.5	4.6	4.6	4.7	4.7	4.8
44	4.1	4.1	4.2	4.3	4.3	4.4	4.4	4.5	4.5	4.5	4.6	4.6	4.6
46	4	4.1	4.1	4.2	4.2	4.3	4.3	4.4	4.4	4.5	4.5	4.6	4.6
48	3.9	4	4.1	4.1	4.2	4.2	4.3	4.3	4.3	4.4	4.4	4.5	4.5
50	3.9	3.9	4	4.1	4.1	4.1	4.2	4.2	4.3	4.3	4.4	4.4	4.5
52	3.9	3.9	3.9	4	4	4.1	4.1	4.2	4.2	4.3	4.3	4.3	4.4
54	3.8	3.9	3.9	3.9	4	4	4.1	4.1	4.1	4.2	4.2	4.3	4.3
56	3.8	3.8	3.9	3.9	3.9	4	4	4.1	4.1	4.1	4.2	4.2	4.3
58		3.8	3.8	3.9	3.9	3.9	4	4	4.1	4.1	4.1	4.2	4.2
60			3.8	3.8	3.9	3.9	3.9	4	4	4.1	4.1	4.1	4.1
62				3.8	3.8	3.8	3.9	3.9	3.9	4	4	4	4.1
64					3.8	3.8	3.8	3.9	3.9	3.9	4	4	4.1
66						3.8	3.8	3.8	3.9	3.9	3.9	4	4
68							3.8	3.8	3.8	3.9	3.9	3.9	3.8
70								3.8	3.8	3.8	3.9	3.8	3.5
72									3.8	3.7	3.6	3.5	3.2
74										3.4	3.3	3.1	2.9
76											3.1	3	2.7
78												2.7	2.4
80												2.5	2.2
82													2.2
84													1.9
86													1.8
88													1.7
Reeving	1	1	1	1	1	1	1	1	1	1	1	1	1