

ZOOMLION

Zoomlion Heavy Industry Science & Technology Co.,Ltd.

Add: No.677, Lugu Road, Zoomlion Industrial Park, Changsha, Hunan, China, 410205

Copyright©2022 Zoomlion. All rights reserved. Reproduction and copying of any part of contents is not allowed for any purposes without Zoomlion's approval.



Product specifications are subject to change without notice and obligation. The photographs and/or drawing in this document are for illustrative purposes only. Please consult your local ZOOMLION dealer for more information.
website:en.zoomlion.com 2022.09.27

ZOOMLION ALL TERRAIN CRANE ZAT3000V863



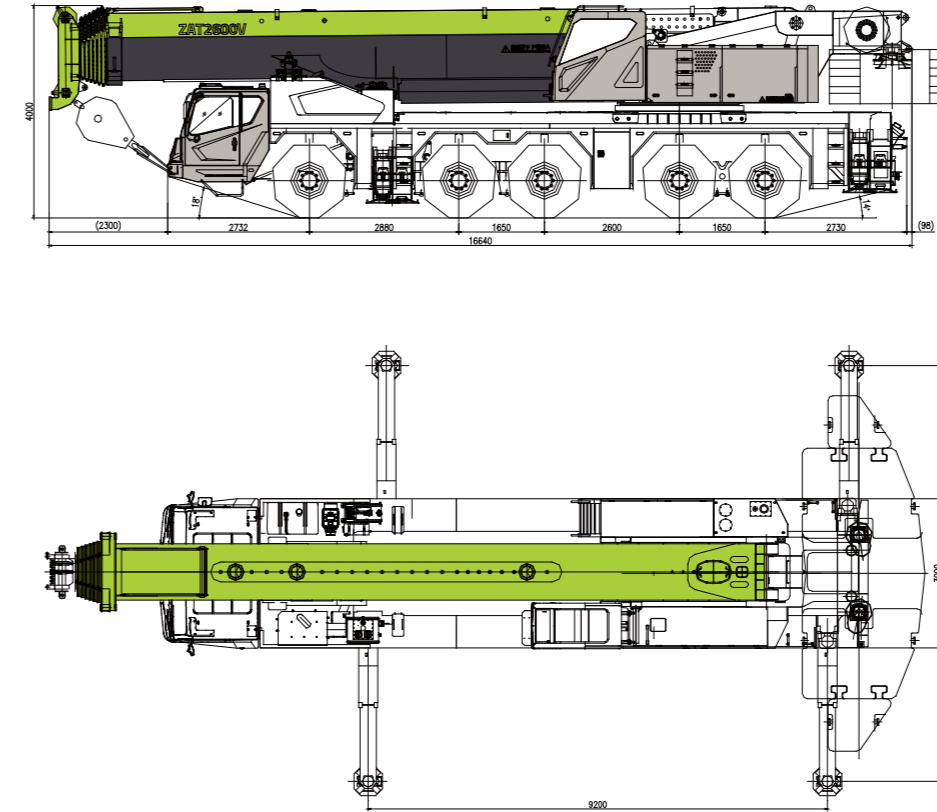
ZOOMLION

4.0
PRODUCTS

CONTENTS

DIMENSIONS	2
BOOM / JIBS COMBINATION	2-3
WEIGHT	3
COUNTERWEIGHT	4
LIFTING HEIGHT CURVE	4-12
LIFTING CAPACITY TABLES	5-13
TECHNICAL SPECIFICATIONS	13
MAIN TECHNICAL PARAMETERS	14

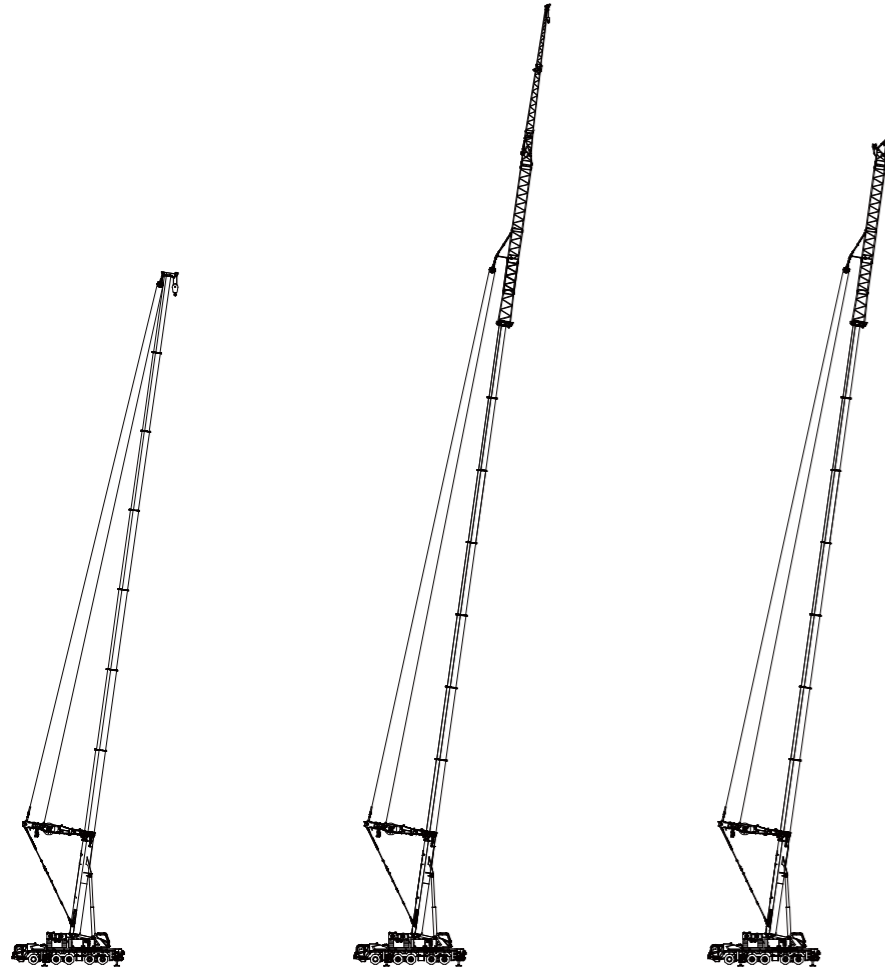
DIMENSIONS



BOOM / JIBS COMBINATION



BOOM / JIBS COMBINATION



Main boom + Superlift (optional)

Main boom + Superlift + Light-duty jib (optional)

Main boom + Superlift + Heavy-duty jib (optional)

WEIGHT

Axle	1	2	3	4	5	Total weight
T	25.4	25.4	13.1	13.1	13.1	90.1

Hook Load T	No. of Sheaves	No. of Lines	Weight Kg	Remark
220	22	11	3410	optional
130	15	7	2100	optional
100	11	5	1900	Standard
80	7	4	2100	optional
40	3	1	1400	Standard
25	3	1	900	optional
12	1	0	700	optional

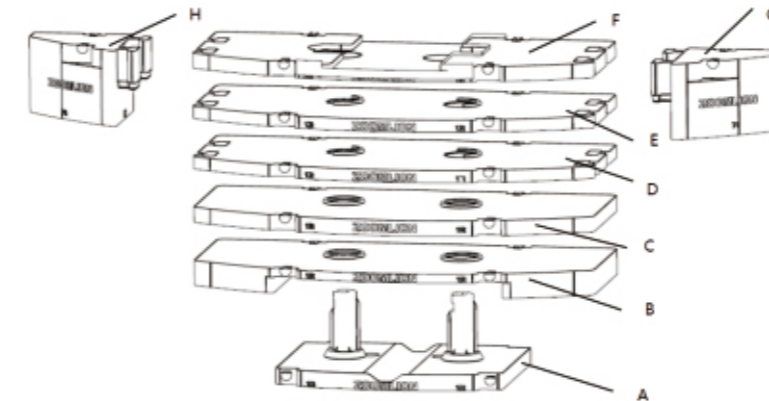
Working Speeds

Drive	km/h MAX.	Swing	Telescoping
445/95R25	80	48	445/95 R25

Drive	Operation Speed	Rope diameter/length	Max. single line pull
1	125m/min	Φ 24 mm/380m	13000Kg
2	56m/min	Φ 34mm/195m	36000Kg
Swing	0~1.5r/min		
Derricking	70s		
Telescoping	900/480s		

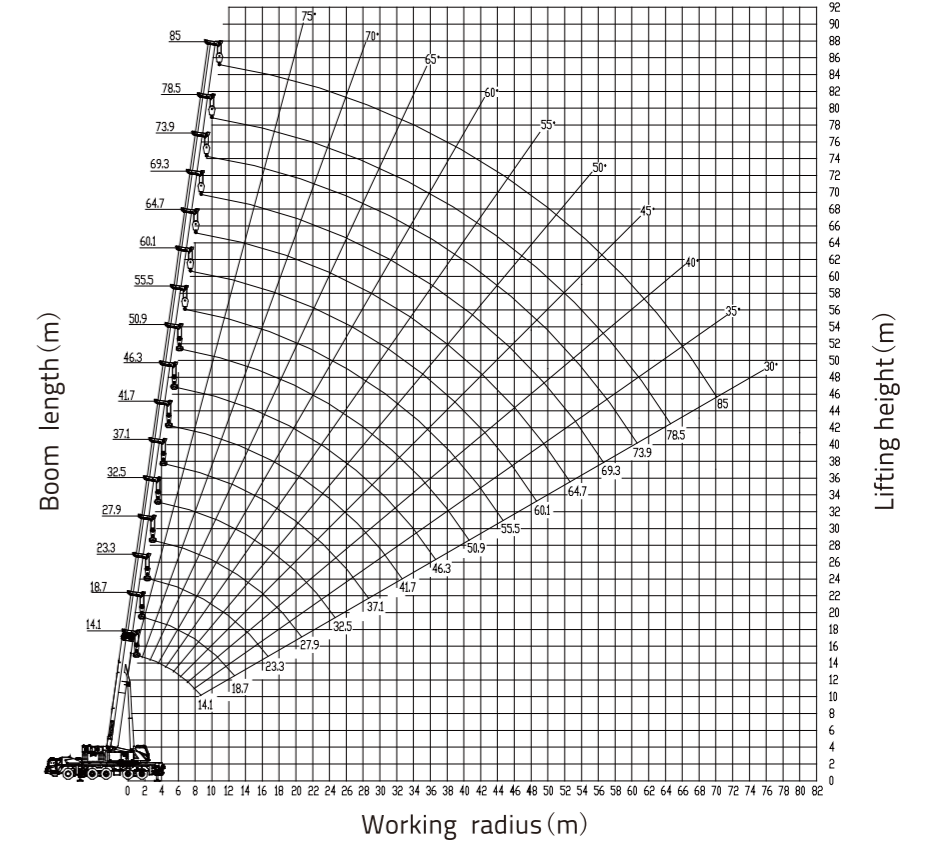
COUNTERWEIGHT

Combinations	A	B	C	D	E	F	G	H
0t	0	0	0	0	0	0	0	0
10t	1	0	0	0	0	0	0	0
25t	1	1	0	0	0	0	0	0
40t	1	1	1	0	0	0	0	0
52t	1	1	1	1	0	0	0	0
64t	1	1	1	1	1	0	0	0
76t	1	1	1	1	1	1	0	0
90t	1	1	1	1	1	1	1	1



LIFTING HEIGHT CURVE

Main boom OM: 14.1m – 85m



LIFTING CAPACITY TABLES

Main boom + Superlift + Heavy-duty jib

Unit: t

Outriggers completely extended 8.3m, with 90t counterweight, over full range							
Working Radius (m)	Main boom (m) + A-frame (m) + Extension (m) + Tip boom (m)						
	73.9	78.5	73.9	78.5	73.9	78.5	
4	4	4	8	8	4	4	
4	4	4	4	4	4	4	
0	0	0	0	0	8	8	
5	5	5	5	5	5	5	
18	15.5						
20	15.2	12.9	10.9				
22	14.9	12.7	10.7	9.1			
24	14.6	12.5	10.5	9.0	7.7		
26	14.1	12.3	10.3	8.9	7.6	6.3	
28	13.6	12.1	10.1	8.8	7.5	6.2	
30	13.1	11.8	9.9	8.7	7.3	6.1	
32	12.6	11.4	9.6	8.6	7.1	6.0	
34	12.1	11.0	9.3	8.5	6.9	5.9	
36	11.7	10.6	9.0	8.3	6.7	5.8	
38	10.8	10.2	8.7	8.1	6.5	5.7	
40	9.6	9.8	8.5	7.9	6.3	5.6	
42	8.7	9.0	8.3	7.7	6.1	5.5	
44	7.8	8.1	7.9	7.5	5.9	5.4	
46	7.0	7.3	7.1	7.3	5.7	5.3	
48	6.4	6.6	6.4	6.7	5.5	5.2	
50	5.6	6.0	5.7	6.0	5.4	5.1	
52	5.1	5.4	5.2	5.4	5.3	5.0	
54	4.5	4.8	4.6	4.8	4.8	4.9	
56	4.0	4.3	4.1	4.4	4.3	4.5	
58	3.6	3.8	3.6	3.9	3.8	4.0	
60	3.2	3.4	3.2	3.4	3.3	3.6	
62	2.8	3.0	2.8	3.0	2.9	3.1	
64	2.4	2.6	2.4	2.7	2.5	2.7	
66		2.3	2.1	2.3	2.2	2.4	
68		2.0	1.7	2.0	1.8	2.0	
70				1.6	1.6	1.7	
72				1.4	1.2	1.4	
74						1.2	
Reeving Hook	3 40t						
Telescoping mode	I	3	3	3	3	3	
	II	2	3	3	3	3	
	III	2	2	3	3	3	
	IV	2	2	2	3	3	
	V	2	2	2	2	3	
	VI	2	2	2	2	3	
	VII	2	2	2	2	3	

Note:
 The meanings of figures in the row "Working radius (m)":
 1/4 in row 3: 4 m transition section; 8 in row 3: 4 m transition section + 4m heavy-duty jib;
 2/4 in row 4: A-frame lattice jib length
 3/8 in row 5: 8m heavy-duty jib;
 4/5 in row 6: 0.5 m transition section + 4.5 m tip boom.

TECHNICAL SPECIFICATIONS

Crane Superstructure

Main boom	7-section telescopic boom made of 1100MPa high-tensile steel Optimal oviform boom profile of particular tensional rigidity, outstanding local stability and for the super lifting capacities. Main boom length: 14.9 m - 80 m.
Jib	The jib consists of light-duty jib and heavy-duty jib. Light-duty jib variants of 20 m, 28 m and 37.5 m (optional: 8 m extension). Under the superlift OM, light-duty jib variants are 24.5 m, 32.5 m, 40.5 m. Heavy-duty jib variants are 13 m, 17 m and 25 m. It cannot be used without Y-shaped guying system. The jib cannot be attached with the vehicle during driving.
Engine	Model: Weichai WP13.550E62.
Type	6-cylinder in line, water-cooled diesel with 4 stroke cycles, turbo-charged, intercooled. Rated power / RPM: 405 kw at 1900 r/min. Max. output torque / RPM: 2500 N.m at 950 - 1400 r/min.

Crane Carrier

Chassis frame	Made by ZOOMLION with high-tensile steel plate.
Outrigger	H type two sectional outrigger, box-shaped section, made of high-tensile steel (δs=960MPa).
Engine	Weichai WP13.550E62 max. output power 405 kw at 1900 r/min., max. torque 2500 N.m at 950 - 1400 r/min.
Transmission	FAST homemade manual and automatic integrated transmission 12 forward and 2 reverse speeds.
Suspension	Hydro-pneumatic suspension, load equalization between the axle pairs, The suspension height can be adjustable. It is of the suspension rigid locking function.
Steering	Min. turning radius less than 12m, total 6 steering modes.
Brake	It consists of service brake, parking brake (emergency brake) and auxiliary brake.
Service brake	dual-circuit air brake system, acting on 10 disc brakes.
Parking brake	spring-loaded brake, acting on 6 disc brakes Auxiliary brake: engine exhaust brake.
Driver's cab	Modern and luxury driver's cab with man-machine friendly layout offers a comfortable operating experience. AC and heater.

MAIN TECHNICAL PARAMETERS

Item		Value	Remarks	
Working performance	Max. rated lifting capacity	t	300	
	Max. load moment of basic boom	t.m	756	
	Max. load moment of main boom (fully extended)	t.m	299	
	Max. lifting height of basic boom	m	14	
	Max. lifting height of main boom	m	85	
Working speeds	Max. hoist rope speed (Main winch)	m/min	125	
	Boom derricking up time	s	70	
	Boom extending time (8 sections)	s	750	
	Slewing speed	r/min	0 - 1.5	
	Max. operation altitude	m	2000	
Driving	Max. driving speed	km/h	80	
	Max. gradeability	%	48	
	Min. turning diameter	m	≤ 22.2	
	Min. ground clearance	mm	320	
	Limits for exhaust pollutants and smoke		China	
	Front overhang angle	°	18	
	Rear overhang angle	°	14	
Mass	Complete vehicle kerb mass	kg	54705	
	Single axle load	kg	Axles 1 and 2: 9450 / Axles 3, 4 and 5: 12000	
	Overall dimensions (L x W x H)	mm	16100 x 3000 x 4000	
	Outrigger spread (W)	m	8.3	
Dimension	Outrigger spread (L)	m	9.2	
	Slewing radius of counterweight tail	mm	5420	
	Main boom length	mm	14.1 - 85	
	Boom angle	°	-0.5 - 82	
	Jib length	m	20, 28	Optional: 37.5
	Superlift device		Y-shaped single piece superlift	Optional
	Telescoping mode of main boom		Single cylinder telescoping system with hydraulic interlocking device, double side pins	
	Derricking mode		Single cylinder	