

ZOOMLION ALL TERRAIN CRANE ZAT2000V753-1



ZOOMLION

Zoomlion Heavy Industry Science & Technology Co.,Ltd.
Add: No.677, Lugu Road, Zoomlion Industrial Park, Changsha, Hunan, China, 410205
Copyright©2024 Zoomlion. All rights reserved. Reproduction and copying of any part of contents is not allowed for any purposes without Zoomlion's approval.



Product specifications are subject to change without notice and obligation. The photographs and/or drawing in this document are for illustrative purposes only. Please consult your local ZOOMLION dealer for more information.
website:en.zoomlion.com 2024.01.24

ZOOMLION

4.0
PRODUCTS

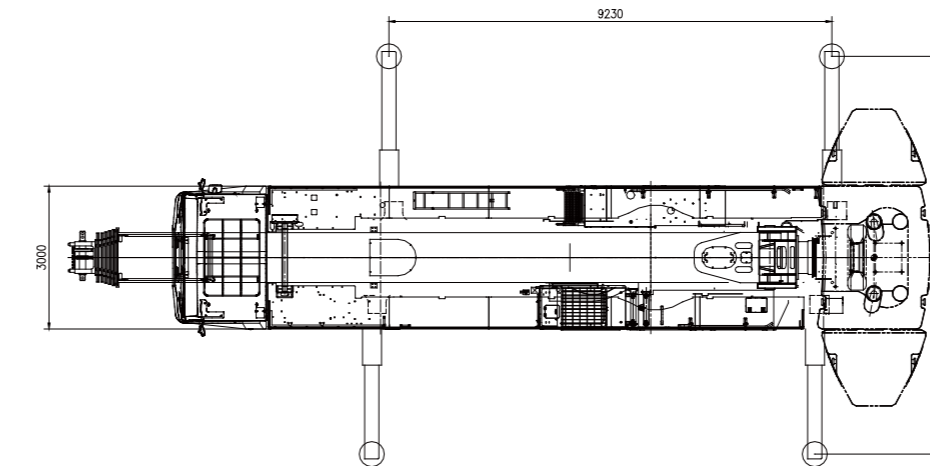
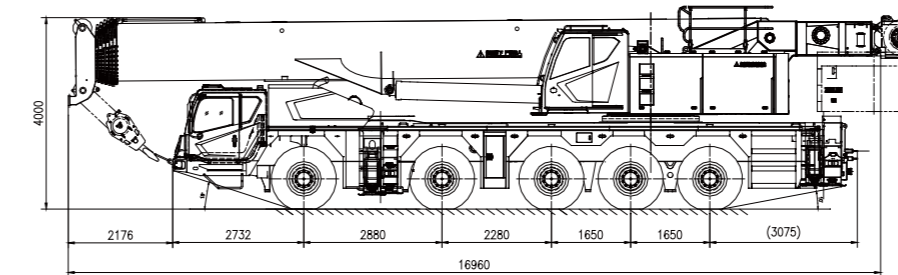
CONTENTS

DIMENSIONS	2
DIMENSIONS IN TRAVELLING ORDER	2-3
OM COMBINATION	3
CRANE AND COMPONENT WEIGHTS	4
LIFTING CAPACITY TABLES / LIFTING HEIGHT CHARTS	5-13
TECHNICAL SPECIFICATIONS	13-14
MAIN TECHNICAL PARAMETERS	14

DIMENSIONS

Options

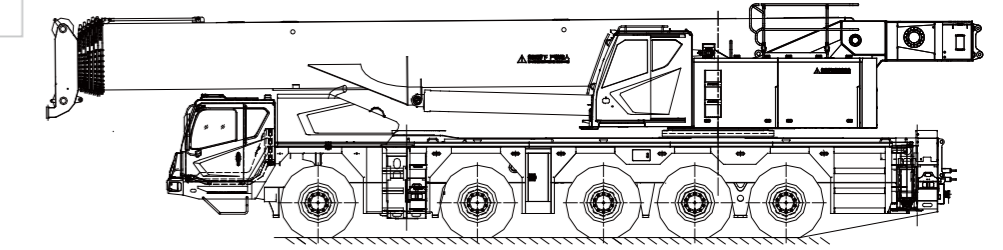
No.	Description	Remarks
1	Outrigger pads	Overall dimensions:1550mm*1550mm*120, 4 pieces
2	Extension	Including 2 pieces of 8m extensions
3	Hook	Stand configuration: 60t (ramshorn hook), 8t Optional: 110t, 90t, 70t (ramshorn hook), 25t



DIMENSIONS IN TRAVELLING ORDER

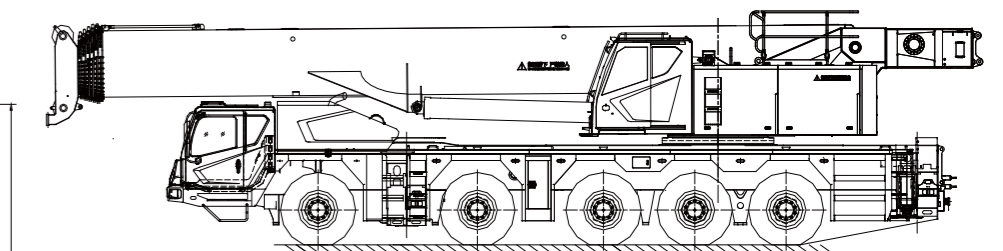
① Single axle below 12t travel mode

These components such as the hook, the movable counterweight, the jib, the rooster sheave, the auxiliary winch & the wire rope, the outrigger pads and the spare tire are removed from the crane. (Tire size: 385/25 R95). Under this travel mode, the vehicle speed is below 80 km/h and max. permissible gradeability is 48%.



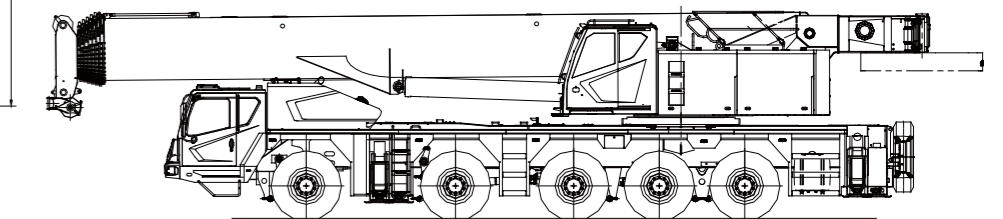
② Single axle below 12t travel mode

These components such as the hook, the movable counterweight, the jib, the auxiliary winch & the wire rope, the right front outrigger (including the oil cylinder), the left rear sliding beam (including the oil cylinder), the outrigger pads and the spare tire are removed from the crane. (Tire size: 445/25 R95). Under this travel mode, the vehicle speed is below 80 km/h and max. permissible gradeability is 48%.



③ Road travel mode (70t)

These components such as the hook, the rooster sheave, the jib, the auxiliary winch & the wire rope are removed from the crane. And 10t counterweight is with the vehicle. For intermediate distance transit, the vehicle speed is below 40 km/h and max. permissible gradeability is 45%.

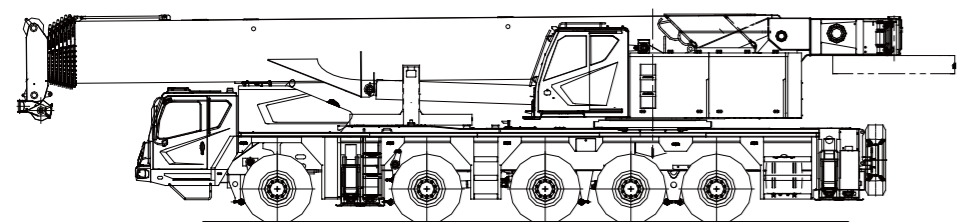


DIMENSIONS IN TRAVELLING ORDER

④ Road travel mode (78t)

These components such as the hook, the rooster sheave, the jib, the auxiliary winch and the wire rope are removed from the crane. And 18t counterweight is with the vehicle.

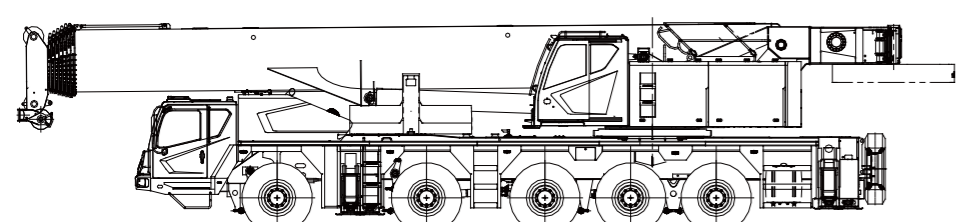
For short distance transit, the vehicle speed is below 20 km/h and max. permissible gradeability is 40%.



⑤ Road travel mode (87t)

These components such as the hook, the rooster sheave, the jib, the auxiliary winch and the wire rope are removed from the crane. And 27t counterweight is with the vehicle.

For short distance transit, the vehicle speed is below 20 km/h and max. permissible gradeability is 36%.



Weight distribution in travelling order

	1	2	3	4	5	Total weight (t)
①	11.8	11.9	11.9	11.9	11.9	59.4
②	11.6	11.9	11.8	11.8	11.8	58.9
③	6.2	6.2	19.2	19.2	19.2	70.3
④	8.5	8.5	20.5	20.5	20.5	78.5
⑤	11.5	11.5	21.5	21.5	21.5	87.5

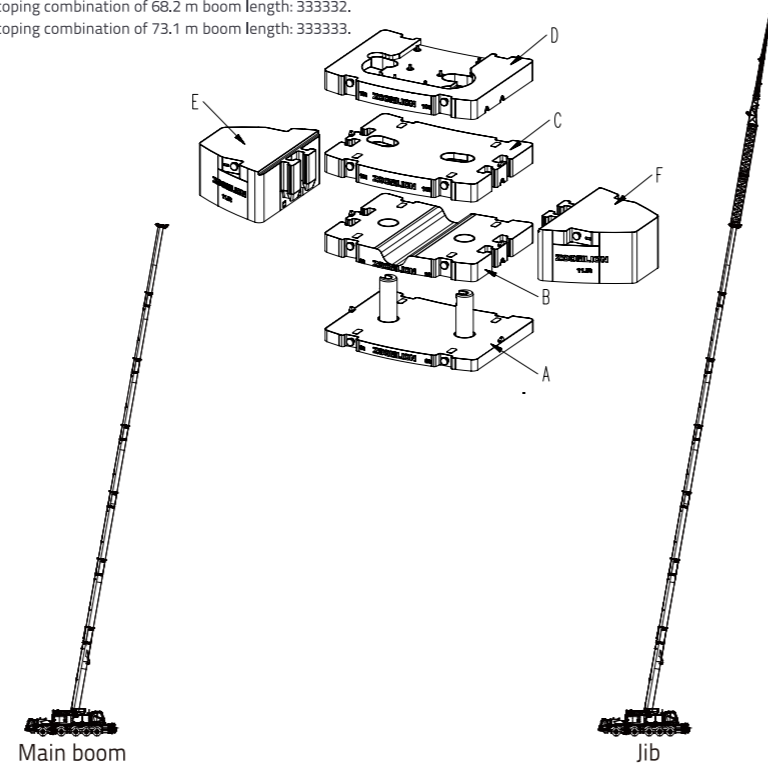
OM COMBINATION

Working Condition	Boom/Jib Length
Main Boom	14.3m-77.5m
Main Boom + 10.4m Jib	68.2m Main Boom+ 10.4m Jib
Main Boom + 10.4m Jib	73.1m Main Boom + 10.4m Jib
Main Boom + 17.5m Jib	68.2m Main Boom + 17.5m Jib
Main Boom + 17.5m Jib	73.1m Main Boom + 17.5m Jib
Main Boom + 25.5m Jib	68.2m Main Boom + 25.5m Jib
Main Boom + 25.5m Jib	73.1m Main Boom + 25.5m Jib
Main Boom + 33.5m Jib	68.2m Main Boom + 33.5m Jib
Main Boom + 33.5m Jib	73.1m Main Boom + 33.5m Jib

Note:

Telescoping combination of 68.2 m boom length: 333332.

Telescoping combination of 73.1 m boom length: 333333.



CRANE AND COMPONENT WEIGHTS

Axle	1	2	3	4	5	Total weight
T	12	12	12	12	12	60

Hook (transported individually)

Specification	Weight (t)	Transport dimensions(mm)	Max. fall	Single/double hook	Standard/optional configuration
110t	1.28	1835×805×650	14	Double hook	Optional
90t	1.05	1665×650×755	14	Double hook	Optional
70t	0.92	1580×650×700	10	Double hook	Optional
70t	0.9	1675×650×580	10	Single hook	Optional
60t	0.75	460×650×1580	8	Ramshorn hook	Standard
25t	0.58	1410×650×390	3	Single hook	Optional
8t	0.38	φ405×900	1	Auxiliary hook	Standard

Working Speeds

385/95R25	km/h MAX.	%	12/R2
	80	48	

Wire rope

	Diameter (mm)	Length (m)	Max. pulling force of single rope
Main hoist rope	φ 20	360	9.3
Auxiliary hoist rope	φ 20	220	9.3

Counterweight

	Description	Mass (t)	Transport dimensions (mm)	Quantity(piece)
A	Lower counterweight	8	3000x2350x980	1
B	Intermediate counterweight	9	3000x2350x340	1
C	Intermediate counterweight	10	3000x2350x340	1
D	Fixed counterweight	10	3000x2350x350	1
E	Side counterweight	11.5	2250x1600x950	1
F	Side counterweight	11.5	2250x1600x950	1

Combinations	A	B	C	D	E	F
0t	0	0	0	0	0	0
10t	0	0	0	1	0	0
18t	1	0	0	1	0	0
27t	1	1	0	1	0	0
37t	1	1	1	1	0	0
60t	1	1	1	1	1	1

LIFTING CAPACITY TABLES / LIFTING HEIGHT CHARTS

Unit: t

Outriggers fully extended (8.3m), with 60 tons counterweight, counterweight moved backwards, over full range												
Working Radius (m)	Boom length (m)											
	48.6	48.6	48.6	48.6	48.6	48.6★	53.5	53.5	53.5	53.5	53.5★	
3.0												
3.5												
4.0												
4.5												
5.0												
5.5												
6.0												
7.0												
8.0												
9.0												
10.0	17.5	21.5	27	28	32	39						
12.0	16	20	24	25	28	34.5	17	22.5	23.5	27.5	30.5	
14.0	14.5	18	21	22.2	25	30.5	15	20.4	20.7	24.5	27	
16.0	13	16	19	19.5	22.8	27.5	13.6	18.7	18.5	22	24	
18.0	12	15	17	17.5	20.5	24.5	12.6	17.1	16.5	19.5	22.5	
20.0	11	13.5	15.2	15.8	18.6	22.5	11.6	15.8	15	17.7	20	
22.0	10	12.5	14.2	14.5	17	20.5	10.6	14.4	13.5	16.2	18.5	
24.0	9.2	11.5	12.8	13	15.5	18.8	9.7	13.2	12.3	14.7	17	
26.0	8.5	10.5	11.8	12	14	17	9	12.1	11.3	13.5	15.5	
28.0	8	9.6	10.9	11	13	15	8.4	11.2	10.3	12.4	14.5	
30.0	7.5	9.2	9.8	10	12	13	7.8	10.3	9.4	11.3	13	
32.0	7	8.5	9.2	9.2	11	11.8	7.3	9.6	8.6	10.4	11.8	
34.0	6.5	8	8.3	8.5	10.4	10.5	6.8	8.9	7.9	9.6	10.5	
36.0	6.2	7.5	8	8	9.5	9.5	6.4	8.3	7.3	8.9	9.3	
38.0	5.8	7	7.4	7.4	8.6	8.4	6	7.7	6.8	8.2	8.4	
40.0	5.3	6.7	7	7	7.8	7.5	5.6	7.2	6.3	7.6	7.5	
42.0							5.3	6.8	5.8	7.1	6.7	
44.0							4.9	6.4	5.2	6.3	5.9	
46.0												
48.0												
50.0												
52.0												
54.0												
56.0												
58.0												
60.0												
62.0												
64.0												
66.0												
68.0												
70.0												
Reeving Hook	5					4						
Telescoping mode	I	1	1	1	1	2	3	1	1	1	2	3
	II	1	1	2	3	3	2	1	2	3	3	3
	III	2	3	3	3	2	2	3	3	3	3	2
	IV	3	3	3	2	2	2	3	3	3	2	2
	V	3	3	2	2	2	2	3	3	2	2	2
	VI	3	2	2	2	2	2	3	2	2	2	2

Unit: t

Outriggers fully extended (8.3m), with 60 tons counterweight, counterweight moved backwards, over full range																
Working Radius (m)	Boom length (m)															
	58.4	58.4	58.4	58.4★	63.3	63.3	63.3★	68.2	68.2★	73.1★	77.5★					
3.0																
3.5																
4.0																
4.5																
5.0																
5.5																
6.0																
7.0																
8.0																
9.0																
10.0																
12.0																
14.0	16	19	22.5	23.5	17	20	22									
16.0	14.8	17.5	20.2	21.2	16	19	21.6	16	17.5							
18.0	13.8	15.6	18.2	19.3	14.7	17	19.9	15	17.3	14						
20.0	12.6	14	16.5	19.5	13.7	15.5	18.2	14	17	13.5	11					
22.0	11.7	12.8	15	16.1	12.5	14.2	16.7	13	15.7	13.2	10.6					
24.0	10.7	11.6	13.8	16.3	11.4	13	15.3	12.5	14.5	12.8	10.2					
26.0	10.1	10.7	12.5	15.1	10.4	12	14.1	12	13.2	12.2	10					
28.0	9.4	9.7	11.6	13.9	9.5	11	13	11.2	12.3	11.4	9.6					
30.0	8.9	8.9	10.6	12.9	9	10.1	12	10.3	11.4	10.6	9.4					
32.0	8.3	8.1	9.7	11.8	8.2	9.3	11	9.5	10.6	9.7	9					
34.0	7.7	7.4	9	10.6	7.9	8.6	10	8.8	9.7	9	8.6					
36.0	7.1	6.8	8	9.5	7.4	8	9.2	8.2	8.9	8.3	8					
38.0	6.6	6.3	7.8	8.5	6.8	7.6	8.3	7.7	8.2	7.8	7.3					
40.0	6.2	5.8	7.3	7.5	6.3	7.3	7.8	7	7.6	7.2	6.8					
42.0	5.7	5.3	6.7	6.7	6	6.7	7	6.7	6.9	6.8	6.5					
44.0	5.3	4.9	6.1	6.1	5.5	6.2	6.4	6	6.3	6.2	6.2					
46.0	4.9	4.5	5.6	5.4	5.2	5.6	5.7	5.8	6.1	6	5.8					
48.0	4.6	4.2	5.2	4.9	4.8	5.3	5.2	5.4	5.6	5.5	5.3					
50.0	4.2	3.9	4.9	4.3	4.4	5	4.6	5	5	5.1	4.9					
52.0					4.2	4.6	4.1	4.5	4.5	4.8	4.6					
54.0					3.9	4.3	3.7	4.2	4.1	4.4	4.3					
56.0								4	3.7	4.1	4					
58.0								3.8	3.3	3.6	3.5					
60.0								3.6	2.9	3.3	3.2					
62.0										2.9	2.8					
64.0										2.6	2.5					
66.0											2.3					
68.0											2					
70.0											1.6					
Reeving Hook	55t			3									2			
Telescoping mode	I	1	1	2	3	1	2	3	2	3	3	4				
	II	2	3	3	3	3	3	3	3	3	3	4				
	III	3	3	3	3	3	3	3	3	3	3	4				
	IV	3	3	3	2	3	3	3	3	3	3	4				
	V	3	2	2	2	3	3	2	3	3	3	4				
	VI	3	3	2	2	3	2	2	3	2	3	4				

Unit: t

Outriggers fully extended (8.3m), with 60 tons counterweight, counterweight moved forwards, over full range												
Working Radius (m)	Boom length (m)											
	14.3★	19.2	19.2	19.2	19.2	19.2★	24.1	24.1	24.1	24.1	24.1★	
3.0	130	54	75	95	105	110						
3.5	116	52	75	95	104	105	26	53	75	93	100	
4.0	106	49	75	93	103	104	25.5	53	72	92	94	
4.5	102	47	75	90	97	97	24.5	52	68	88	93	
5.0	95	43	75	85	92	92	22	51	65	84	91	
6.0	84	40	68	80	84	84	20.5	47.5	58	77	82	
7.0	75	37	61	73	74	73	19	44	52	72	74	
8.0	66	35	56	66	66	65	17.5	40	48	64	66	
9.0	58	33	52	60	60	59	16	37.5	44	60	60	
10.0	51	30	47	55	54	53	15	34.5	40	53	53	
12.0		27	41	46	45	44	13	30	35.5	47	46	
14.0		25	36.5	38	37	36	11.5	27	31	42	38	
16.0							10.3	24	27.5	33.5	32	
18.0							9.5	21.8	25.5	29.5	29	
20.0												
22.0												
24.0												
26.0												
28.0												
30.0												
32.0												
34.0												
36.0												
38.0												
40.0												
42.0												
44.0												
46.0												
48.0												
50.0												
52.0												
54.0												
56.0												
58.0												
60.0												
62.0												
Reeving Hook	12						9t					
Telescoping mode	I	1	1	1	1	1	1	1	1	1	2	
	II	1	1	1	1	1	2	1	1	1	2	
	III	1	1	1	1	2	1	1	1	2	1	
	IV	1	1	1	2	1	1	1	2	2	1	
	V	1	1	2	1	1	1	1	2	2	1	
	VI	1	2	1	1	1	1	3	2	1	1	

Unit: t

Outriggers fully extended (8.3m), with 60 tons counterweight, counterweight moved forwards, over full range													
Working Radius (m)	Boom length (m)												
	29	29	29	29	29	29★	33.9	33.9	33.9	33.9	33.9	33.9★	
3.0													
3.5													
4.0													
4.5	26	39	56.5	75	85	90							
5.0	25	36	54	70	82	87							
5.5	23	33	50	65	78	80	24.5	24	24.5	54	70	75	

LIFTING CAPACITY TABLES / LIFTING HEIGHT CHARTS

Unit: t

Outriggers fully extended (8.3m), with 60 tons counterweight, counterweight moved forwards, over full range

Working Radius (m)	Boom length (m)												
	38.8	38.8	38.8	38.8	38.8	38.8★	43.7	43.7	43.7	43.7	43.7	43.7★	
3.0													
3.5													
4.0													
4.5													
5.0													
5.5													
6.0													
7.0	20	24	30	37	54	65							
8.0	18.5	22	27.5	34.5	51	63							
9.0	17.2	20.6	26	32	47	61	15	22	27	32	34	51	
10.0	16	19	24	29.5	44	55	14	20.5	24.5	30	31	48	
12.0	13.8	17	21	26	40	47	12	18.5	22.5	26	27	42	
14.0	12	15	18.2	23	35	43	11	16.5	20	23	24	38.5	
16.0	11	13.2	16.5	20.5	31	35.5	9.6	15	18	20	21	35	
18.0	9.8	12	14.5	18.3	29	29.5	8.8	13.5	16.5	18	19	30	
20.0	8.9	11	13.5	16.5	25.5	25	8	12.2	15	16.5	17.5	25.5	
22.0	8	10	12	15	23	21.3	7	11.1	13.5	15	16	22	
24.0	7.3	9.2	11	14	20	18.3	6.5	10.2	12.5	13.6	14.5	19.2	
26.0	6.7	8.5	10	13	17.5	16	6	9.3	11.5	12.6	13.2	17	
28.0	6.3	7.8	9.5	12	15.6	14	5.5	8.5	10.6	11.8	12	15	
30.0	5.8	7.3	8.8	11	13.9	12.3	5	8	10	10.8	11.2	13.0	
32.0	5.3	6.7	8	10.3	12.4	10.6	4.7	7.3	9.2	10	10.3	12	
34.0							4.3	7	8.5	9.5	9.7	10.5	
36.0							4	6.5	8	8.8	9	9.5	
38.0													
40.0													
42.0													
44.0													
46.0													
48.0													
50.0													
52.0													
54.0													
56.0													
58.0													
60.0													
62.0													
64.0													
66.0													
68.0													
70.0													
Reeving		8					6						
Hook		90t					55t						
Telescoping mode	I	1	1	1	1	2	1	1	1	1	1	2	
	II	1	1	1	1	2	2	1	1	1	2	3	2
	III	1	1	2	3	2	2	1	2	3	3	2	2
	IV	2	3	3	2	2	2	3	3	3	2	2	2
	V	3	3	2	2	2	2	3	3	2	2	2	2
	VI	3	2	2	2	2	1	3	2	2	2	2	2

Unit: t

Outriggers fully extended (8.3m), with 60 tons counterweight, counterweight moved forwards, over full range

Working Radius (m)	Boom length (m)												
	48.6	48.6	48.6	48.6	48.6	48.6★	53.5	53.5	53.5	53.5	53.5★		
3.0													
3.5													
4.0													
4.5													
5.0													
5.5													
6.0													
7.0													
8.0													
9.0													
10.0	17.5	21.5	27	28	32	39							
12.0	16	20	24	25	28	34.5	17	22.5	23.5	27.5	30.5		
14.0	14.5	18	21	22.2	25	30.5	15	20.4	20.7	24.5	27		
16.0	13	16	19	19.5	22.8	27.5	13.6	16.7	18.5	22	24		
18.0	12	15	17	17.5	20.5	24.5	12.6	17.1	16.5	19.5	22.5		
20.0	11	13.5	15.2	15.8	18.6	22.5	11.6	14.1	15	17.7	20		
22.0	10	12.5	14.2	14.5	17	20.5	10.6	12.9	13.5	16.2	18.5		
24.0	9.2	11.5	12.8	13	15.5	18	9.7	11.8	12.3	14.7	17		
26.0	8.5	10.5	11.8	12	14	16.5	9	10.8	11.3	13.5	15.5		
28.0	8	9.6	10.9	11	13	14.5	8.4	10.0	10.3	12.4	14		
30.0	7.5	9.2	9.8	10	12	13.5	7.8	10.3	9.4	11.3	12.5		
32.0	7	8.5	9.2	9.2	11	11.2	7.3	8.6	8.6	10.4	11.3		
34.0	6.5	8	8.3	8.5	10	10	6.8	7.9	7.9	9.6	10		
36.0	6.2	7.5	8	8	9	9.0	6.4	7.4	7.3	8.9	8.8		
38.0	5.8	7	7.4	7.4	8	8	6	7.7	6.8	8.2	7.5		
40.0	5.3	6.7	7	7	7.2	7	5.6	7.2	6.3	7.3	6.7		
42.0							5.3	6.0	5.8	6.7	6.2		
44.0							4.9	5.7	5.2	6	5.4		
46.0													
48.0													
50.0													
52.0													
54.0													
56.0													
58.0													
60.0													
62.0													
64.0													
66.0													
68.0													
70.0													
Reeving		5					4						
Hook		55t					25t						
Telescoping mode	I	1	1	1	1	2	3	1	1	1	2	3	
	II	1	1	2	3	3	2	1	2	3	3	3	
	III	2	3	3	3	2	2	3	3	3	3	2	
	IV	3	3	3	2	2	2	3	3	3	2	2	
	V	3	3	2	2	2	2	3	3	2	2	2	
	VI	3	2	2	2	2	2	3	2	2	2	2	

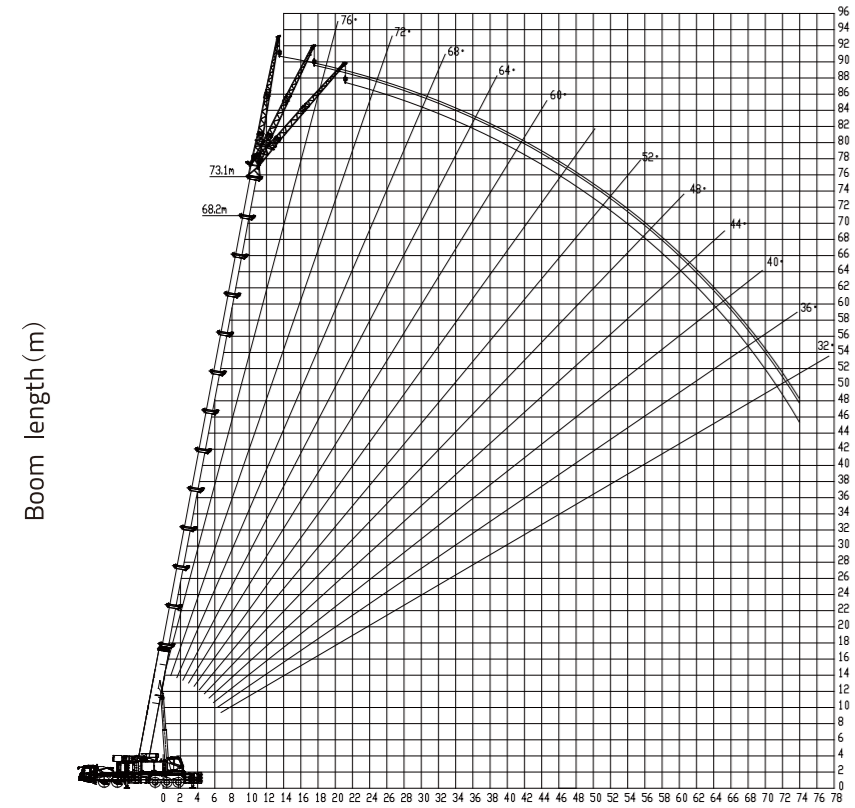
Unit: t Main boom + 10.4 m jib OM

Outriggers fully extended (8.3m), with 60 tons counterweight, counterweight moved forwards, over full range

Working Radius (m)	Boom length (m)												
	58.4	58.4	58.4	58.4★	63.3	63.3	63.3★	68.2	68.2★	73.1★	77.5★		
3.0													
3.5													
4.0													
4.5													
5.0													
5.5													
6.0													
7.0													
8.0													
9.0													
10.0													
12.0													
14.0	16	19	22.5	23.5	17	20	22						
16.0	14.8	17.5	20.2	21.2	16	19	21.6	16	17.5				
18.0	13.8	15.6	18.2	19.3	14.7	17	19.9	15	17.3	14			
20.0	12.6	14	16.5	19.5	13.7	15.5	18.2	14	17	13.5	11		
22.0	11.7	12.8	15	16.1	12.5	14.2	16.7	13	15.7	13.2	10.6		
24.0	10.7	11.6	13.8	16.3	11.4	13	15.3	12.5	14.5	12.8	10.2		
26.0	10.1	10.7	12.5	15.1	10.4	12	14.1	12	13.2	12.2	10		
28.0	9.4	9.7	11.6	13.9	9.5	11	13	11.2	12.3	11.4	9.6		
30.0	8.9	8.9	10.6	12.5	9	10.1	12	10.3	11.4	10.6	9.4		
32.0	8.3	8.1	9.7	11.2	8.2	9.3	11	9.5	10.6	9.7	9		
34.0	7.7	7.4	9	10	7.9	8.6	10	8.8	9.7	9	8.6		
36.0	7.1	6.8	8	9	7.4	8	9.2	8.2	8.9	8.3	8		
38.0	6.6	6.3	7.8	8	6.8	7.6	8	7.7	8.2	7.8	7.3		
40.0	6.2	5.8	7.3	7	6.3	7.3	7.3	7	7.4	7.2	6.8		
42.0	5.7	5.3	6.7	6.4	6	6.7	6.6	6.7	6.7	6.8	6.5		
44.0	5.3	4.9	5.9	5.7	5.5	6.2	6	6	6	6.2	6.2		
46.0	4.9	4.5	5.3	5	5.2	5.6	5.3	5.8	5.8	6	5.8		
48.0	4.6	4.2	5	4.4	4.8	5.3	4.9	5.4	5.3	5.5	5.3		
50.0	4.2	3.9	4.5	4	4.4	4.8	4.3	5	4.8	5	4.9		
52.0					4.2	4.4	3.8	4.5	4.1	4.4	4.5		
54.0					3.9	4	3.2	4.2	3.6	4.1	4.1		
56.0								3.9	3.2	3.7	3.7		
58.0								3.5	3.0	3.3	3.3		
60.0								3.3	2.5	3.0	3		
62.0										2.6	2.5		
64.0										2.0	2.3		
66.0											2		
68.0											1.8		
70.0											1.3		
Reeving		55t					25t						
Hook		2					3						
Telescoping mode	I	1	1	2	3	1	2	3	2	3	4		
	II	2	3	3	3	3	3	3	3	3	4		
	III	3	3	3	3	3	3	3	3	3	4		
	IV	3	3	3	2	3	3	3	3	3			

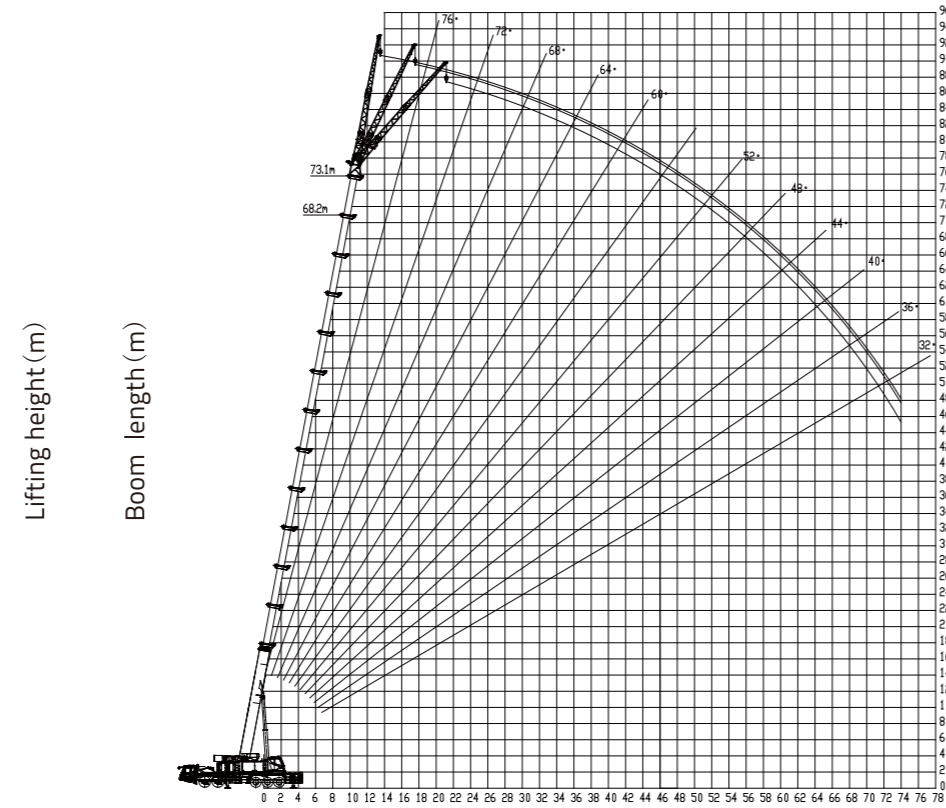
LIFTING CAPACITY TABLES / LIFTING HEIGHT CHARTS

Main boom + 17.5 m jib OM



Working radius(m)

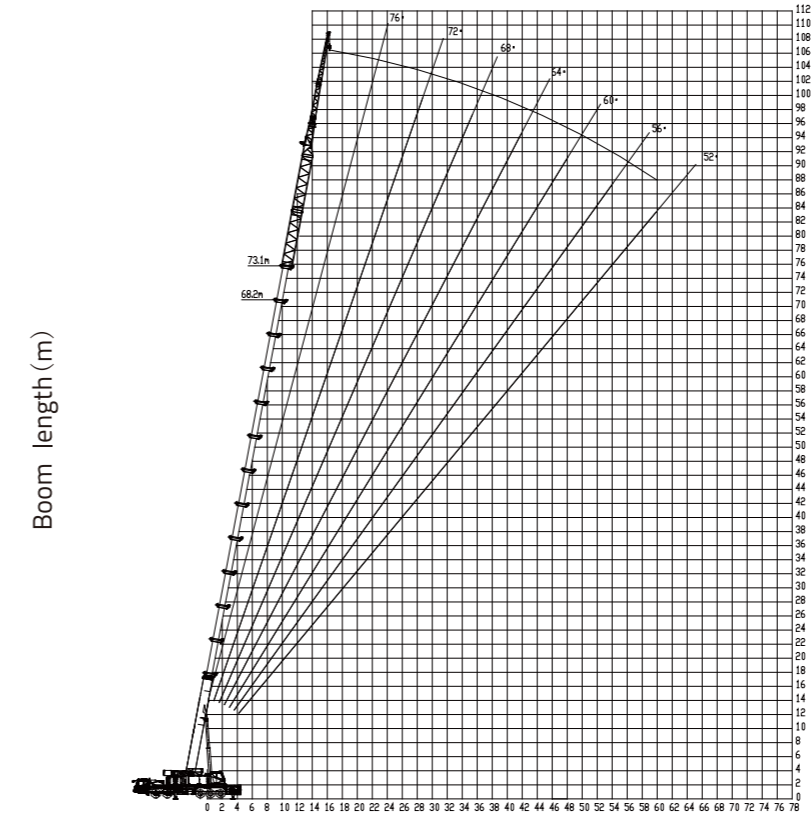
Main boom + 25.5 m jib OM



Working radius(m)

LIFTING CAPACITY TABLES / LIFTING HEIGHT CHARTS

Main boom + 33.5 m jib OM



Working radius(m)

Unit: t

		Outriggers fully extended (8.3m), with 60 tons counterweight, counterweight moved backwards, over full range															
		Boom length (m)															
Working Radius (m)	0°	68.2			73.1			68.2			73.1			68.2		73.1	
		10.4	15.4	20.4	10.4	15.4	20.4	17.5	22.5	27.5	17.5	22.5	27.5	25.5	30.5	33.5	33.5
16.0																	
18.0																	
20.0	7.5			6.5													
22.0	7.3	6.5		6.4	5.5			3.9									
24.0	7.1	6.4	5.6	6.3	5.4	5	3.9			3.8				2.7			
26.0	7	6.3	5.6	6.2	5.3	4.9	3.9	3.1		3.8	3			2.7	2.4		
28.0	6.9	6.2	5.6	6.2	5.2	4.8	3.8	3.1	2.7	3.8	3	2.6	2.7	2.4	2	2.6	2.3
30.0	6.7	6.1	5.5	6.1	5.1	4.7	3.8	3.1	2.7	3.7	3	2.6	2.7	2.4	2	2.6	2.3
32.0	6.5	6	5.4	6	5	4.6	3.7	3.1	2.7	3.6	3	2.6	2.6	2.3	2	2.5	2.3
34.0	6.4	5.9	5.3	5.9	4.9	4.5	3.6	3.1	2.6	3.5	3	2.5	2.5	2.3	2	2.4	2.2
36.0	6.3	5.8	5.2	5.7	4.8	4.4	3.5	3	2.6	3.4	3	2.5	2.4	2.3	2	2.3	2.2
38.0	6.2	5.7	5.1	5.5	4.7	4.3	3.4	3	2.5	3.3	3	2.5	2.4	2.2	2	2.3	2.2
40.0	6	5.6	5	5.3	4.6	4.2	3.3	2.9	2.5	3.2	2.8	2.4	2.4	2.2	2	2.3	2.1
42.0	5.8	5.5	4.9	5.1	4.5	4.1	3.2	2.9	2.5	3.1	2.8	2.4	2.3	2.2	1.9	2.3	2.1
44.0	5.5	5.4	4.8	4.9	4.4	4	3	2.8	2.5	2.9	2.7	2.4	2.3	2.2	1.9	2.2	2.1
46.0	5.2	5.1	4.7	4.7	4.3	3.9	2.8	2.7	2.4	2.7	2.6	2.3	2.3	2.1	1.9	2.2	2.1
48.0	4.8	4.7	4.6	4.6	4.2	3.8	2.7	2.6	2.4	2.6	2.5	2.3	2.2	2.1	1.9	2.2	2
50.0	4.5	4.5	4.4	4.3	4.1	3.7	2.6	2.5	2.3	2.5	2.4	2.2	2.2	2	1.8	2.1	2
52.0	4.2	4.2	4.1	4	4	3.6	2.5	2.4	2.2	2.4	2.3	2.1	2.1	2	1.8	2.1	1.9
54.0	4	4	4	3.8	3.8	3.5	2.3	2.3	2.1	2.2	2.2	2	2	1.9	1.8	2	1.8
56.0	3.6	3.6	3.6	3.5	3.5	3.4	2.2	2.2	2	2.1	2.1	1.9	1.9	1.9	1.7	1.9	1.7
58.0	3.3	3.3	3.3	3.3	3.3	3.3	2.1	2.1	1.9	2	2	1.8	1.8	1.8	1.6	1.8	1.7
60.0	3	3	3	3	3	3	2	2	1.9	1.9	1.9	1.8	1.7	1.7	1.5	1.7	1.6
62.0	2.5	2.5	2.5	2.5	2.5	2.5	1.9	1.9	1.8	1.8	1.8	1.7	1.6	1.6	1.4	1.6	1.5
64.0	2	2	2	2.2	2.2	2.2	1.8	1.8	1.7	1.7	1.7	1.6	1.5	1.5	1.3	1.5	1.5
66.0	1.8	1.8	1.8	2	2	2	1.7	1.7	1.6	1.6	1.6	1.5	1.4	1.4	1.3	1.4	1.4
68.0	1.5	1.5	1.5	1.8	1.8	1.8	1.6	1.6	1.5	1.5	1.5	1.4	1.3	1.3	1.2	1.3	1.3
70.0	1.3	1.3	1.3	1.5	1.5	1.5	1.5	1.5	1.5	1.4	1.4	1.4	1.2	1.2	1.2	1.2	1.2
72.0				1.3	1.3	1.3	1.4	1.4	1.3	1.3	1.3	1.1	1.1	1.1	1.1	1.1	1.1
74.0							1.3	1.3	1.3	1.2	1.2						
76.0																	
78.0																	
Reeving																	
Hook																	

Note:

① Telescoping combination of 68.2 m boom length: 3333332

② Telescoping combination of 73.1 m boom length: 3333333

