

ZCC2600



ZOOMLION

Zoomlion Heavy Industry Science & Technology Co.,Ltd.

Add: No.677, Lugu Road, Zoomlion Industrial Park, Changsha, Hunan, China, 410205

Copyright©2017 Zoomlion. All rights reserved. Reproduction and copying of any part of contents is not allowed for any purposes without Zoomlion's approval.



website.en.zoomlion.com

ZOOMLION

4.0
PRODUCTS

Vision Creates Future

ZOOMLION

CONTENTS

| | | |
|---------|--------------------------------------|---------|
| ZCC2600 | Technical Highlights | 01 - 02 |
| ZCC2600 | Dimensions | 03 |
| ZCC2600 | Transport dimensions and weights | 04 - 07 |
| ZCC2600 | Boom combination | 08 |
| ZCC2600 | Technical description | 09 |
| ZCC2600 | Self assembly system | 10 |
| ZCC2600 | Erecting of boom to working position | 11 |
| ZCC2600 | Lifting performance | 12 - 24 |





ZCC2600

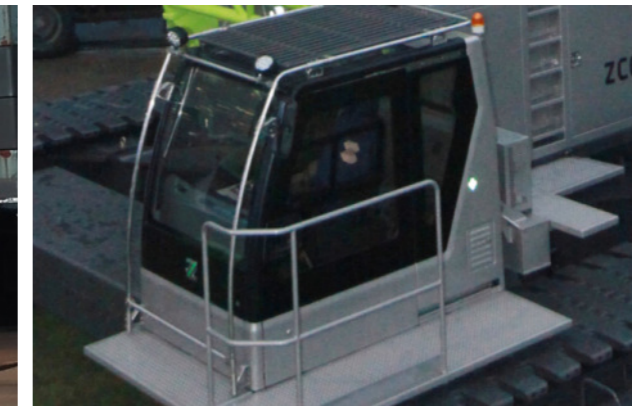
TECHNICAL HIGHLIGHTS

EFFICIENT, QUICK AND SAFETY

- The mechanism operating speed up 20%, and the speed of each mechanism don't slow down while operating 2 functions simultaneously;
- Time of erecting the whole crane is less than 6 hours;
- Omni-directional real-time LMI and monitoring system, to ensure safety operation.

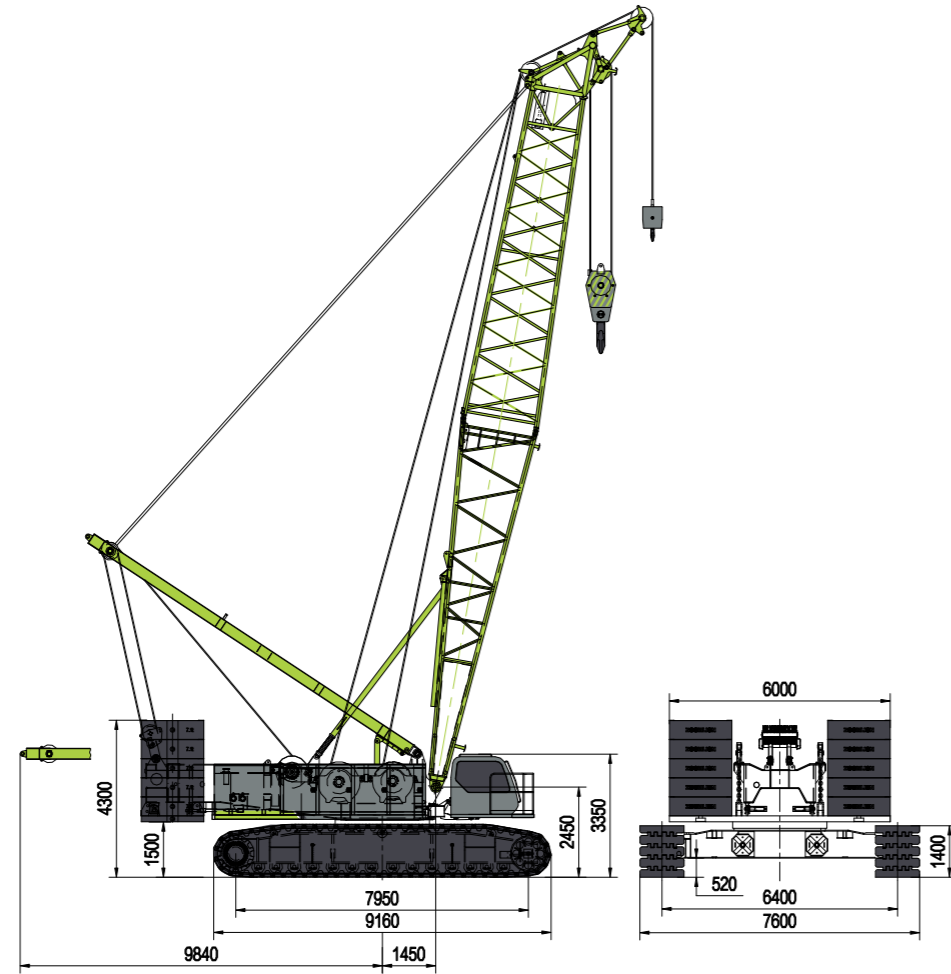
CONVENIENT, COMFORTABLE AND INTELLIGENCE

- The max. Single transport weight is 30.5t, transport width is 3m;
- Omni-directional vehicle information platform, real time monitoring equipment operation, The IOT intelligent interaction system make the mobile service come true.
- Full view cabin, buttons and switches are all within reach, all-around air conditioner form a comfortable operating space.



DIMENSIONS

Basic machine with undercarriage



Operating weight

The operating weight includes the basic machine with crawlers, 2 main winches including wire ropes (300m and 480m) and 20m main boom, consisting of A-frame, boom foot (10m), boom head (10m), 83.7t basic counterweight, 32t carbody counterweight, and 260t hook block.

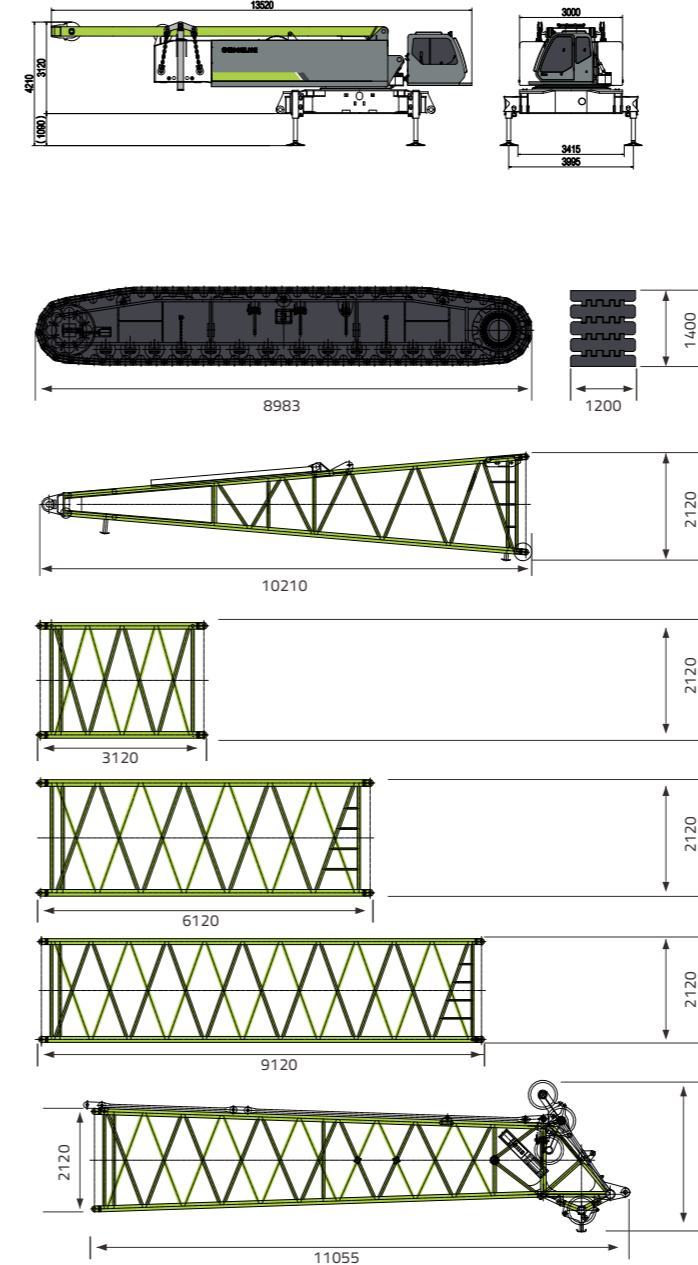
Total weight-----approx. 220t

Equipment

Main boom max. length-----83m
 High reach-----95m
 Luffing jib max. length-----60m
 Max. combination-----main boom 62m
 -----luffing jib 60m
 Fixed jib-----12-30m
 Auxiliary jib 25t

TRANSPORT DIMENSIONS AND WEIGHTS

Basic machine and main boom



Basic machine

| | |
|--|---------|
| Width | 3000mm |
| Weight A (Without hoisting winch, main boom tilting-back support, A-frame and main boom derricking winch) | 32000kg |
| Weight B (Without hoisting winch and main boom tilting-back support) | 37500kg |
| Weight C (Including hoisting winch, main boom tilting-back support, A-frame and main boom derricking winch) | 45500kg |

Crawler

| | |
|------------|-----------|
| | 2x |
| Track pads | 1200mm |
| Width | 1200mm |
| Weight | 24500kg |

Boom foot

| | |
|--------|-----------|
| | 1x |
| Width | 2365mm |
| Weight | 3300kg |

3m boom section

| | |
|--------|-----------|
| | 1x |
| Width | 2320mm |
| Weight | 850kg |

6m boom section

| | |
|--------|-----------|
| | 1x |
| Width | 2320mm |
| Weight | 1400kg |

9m boom section

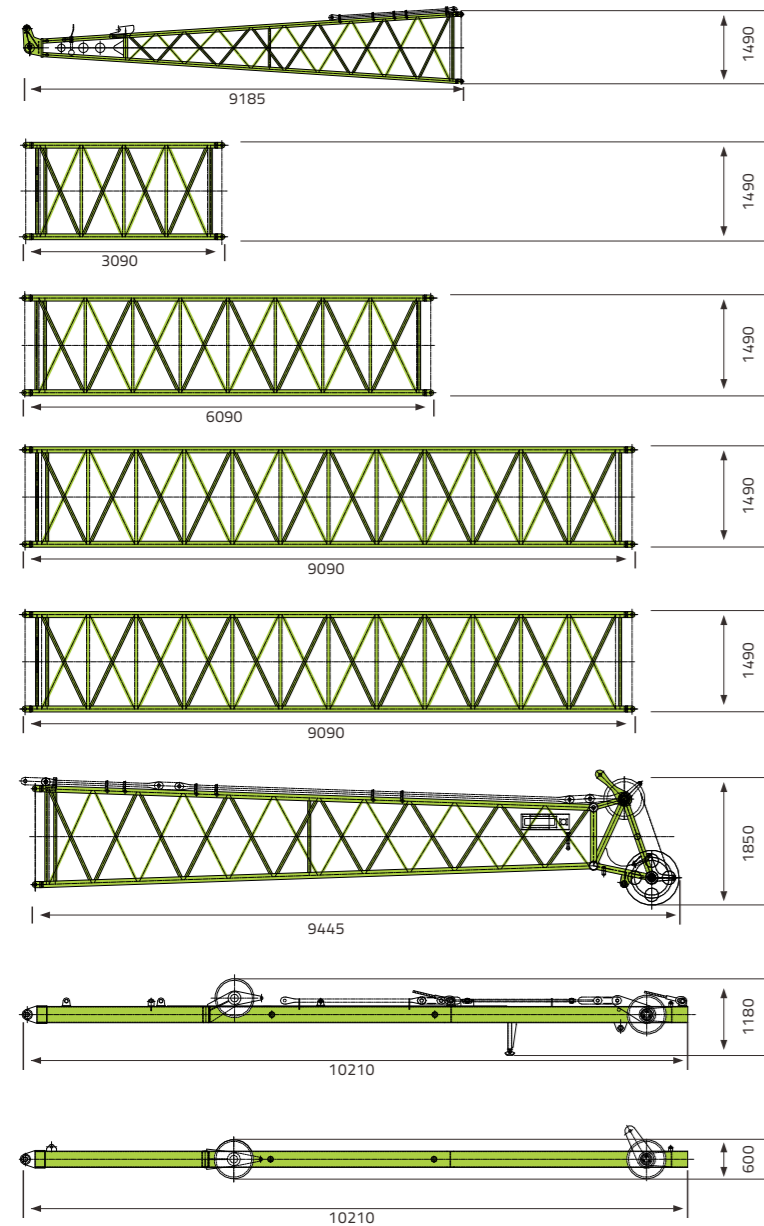
| | |
|--------|-----------|
| | 6x |
| Width | 2320mm |
| Weight | 2000kg |

Boom head

| | |
|--------|-----------|
| | 1x |
| Width | 2320mm |
| Weight | 3500kg |

TRANSPORT DIMENSIONS AND WEIGHTS

Luffing jib



| | |
|-------------------------|-----------|
| Luffing jib foot | 1x |
| Width | 1690mm |
| Weight | 1100kg |

| | |
|-------------------------------|-----------|
| 3m luffing jib section | 1x |
| Width | 1690mm |
| Weight | 370kg |

| | |
|-------------------------------|-----------|
| 6m luffing jib section | 2x |
| Width | 1690mm |
| Weight | 660t |

| | |
|-------------------------------|-----------|
| 9m luffing jib section | 1x |
| Width | 1690mm |
| Weight | 970kg |

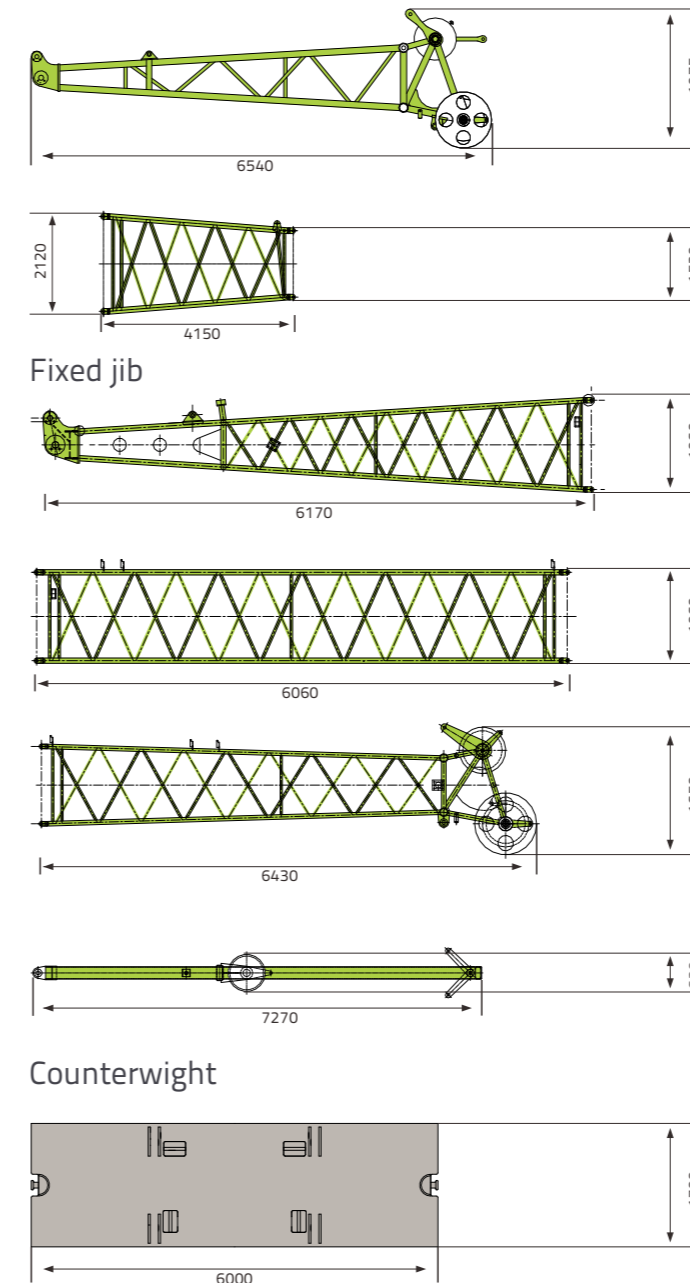
| | |
|---------------------------------|-----------|
| 9m luffing jib section B | 2x |
| Width | 1690mm |
| Weight | 830kg |

| | |
|-------------------------|-----------|
| Luffing jib head | 1x |
| Width | 1690mm |
| Weight | 1100kg |

| | |
|--|-----------|
| WA-frame 2 | 1x |
| Width | 1750mm |
| Weight | 1750kg |
| WA-frame 1 (width: 1385 mm) – 1.63 t × 1 | |

| | |
|-------------------|-----------|
| WA-frame 1 | 1x |
| Width | 1385mm |
| Weight | 1630kg |

TRANSPORT DIMENSIONS AND WEIGHTS



| | |
|-----------------------------|-----------|
| Heavy-duty fixed jib | 1x |
| Width | 1565mm |
| Weight | 1000kg |

| | |
|----------------------------------|-----------|
| 4m L-boom section tapered | 1x |
| Width | 2320mm |
| Weight | 1100kg |

| | |
|-----------------------|-----------|
| Fixed jib foot | 1x |
| Width | 1540mm |
| Weight | 500 kg |

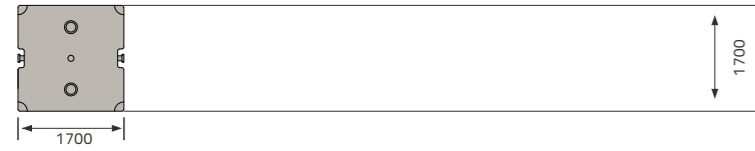
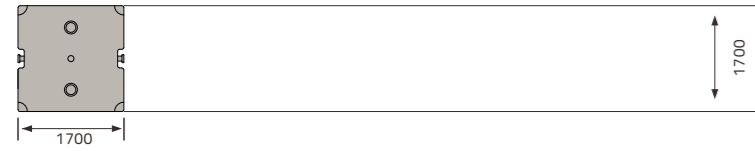
| | |
|-----------------------------|-----------|
| 6m fixed jib section | 3x |
| Width | 1270mm |
| Weight | 360 kg |

| | |
|--|-----------|
| Fixed jib head | 1x |
| Width | 1270mm |
| Weight | 640kg |
| FA-frame (width: 1500 mm) – 0.75 t × 1 | |

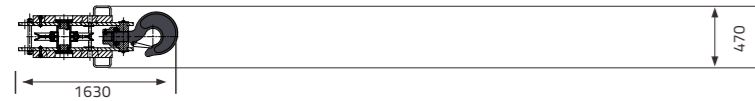
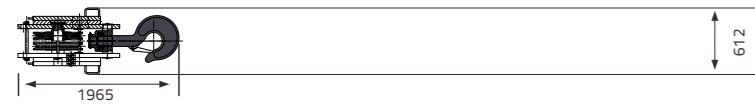
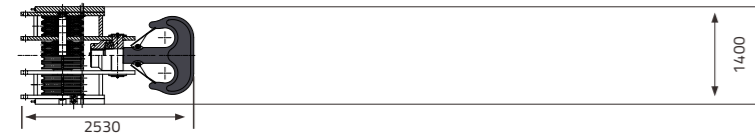
| | |
|-----------------|-----------|
| FA-frame | 1x |
| Width | 1500mm |
| Weight | 750kg |

| | |
|--|-----------|
| Counterweight base plate | 1x |
| Thickness | 160mm |
| Weight | 12700kg |
| Counterweight plate (thickness: 510 mm) – 7.1 t × 10 | |

TRANSPORT DIMENSIONS AND WEIGHTS



Hooks



| | |
|---|------------|
| Counterweight | 10x |
| Thickness | 510mm |
| Weight | 710kg |
| Counterweight plate (thickness: 300 mm, TBM operating mode for options) – 4.0 t × 2 | |

| | |
|--|-----------|
| Counterweight for TBM operating mode | 2x |
| Thickness | 300mm |
| Weight | 4000kg |
| Central counterweight (thickness: 650 mm) – 16 t × 2 | |

| | |
|------------------------------|-----------|
| Carbody counterweight | 2x |
| Thickness | 650mm |
| Weight | 16000kg |

| | |
|------------------------------------|-----------|
| 260t hook blocks-10 sheaves | 1x |
| Weight | 4230kg |

| | |
|--|-----------|
| 160 t / 100 t hook blocks-6 sheaves | 1x |
| Weight | 2780kg |

| | |
|----------------------------------|-----------|
| 50t hook blocks-2 sheaves | 1x |
| Weight | 1700kg |
| 30 t load hook – 1.08 t × 1 | |

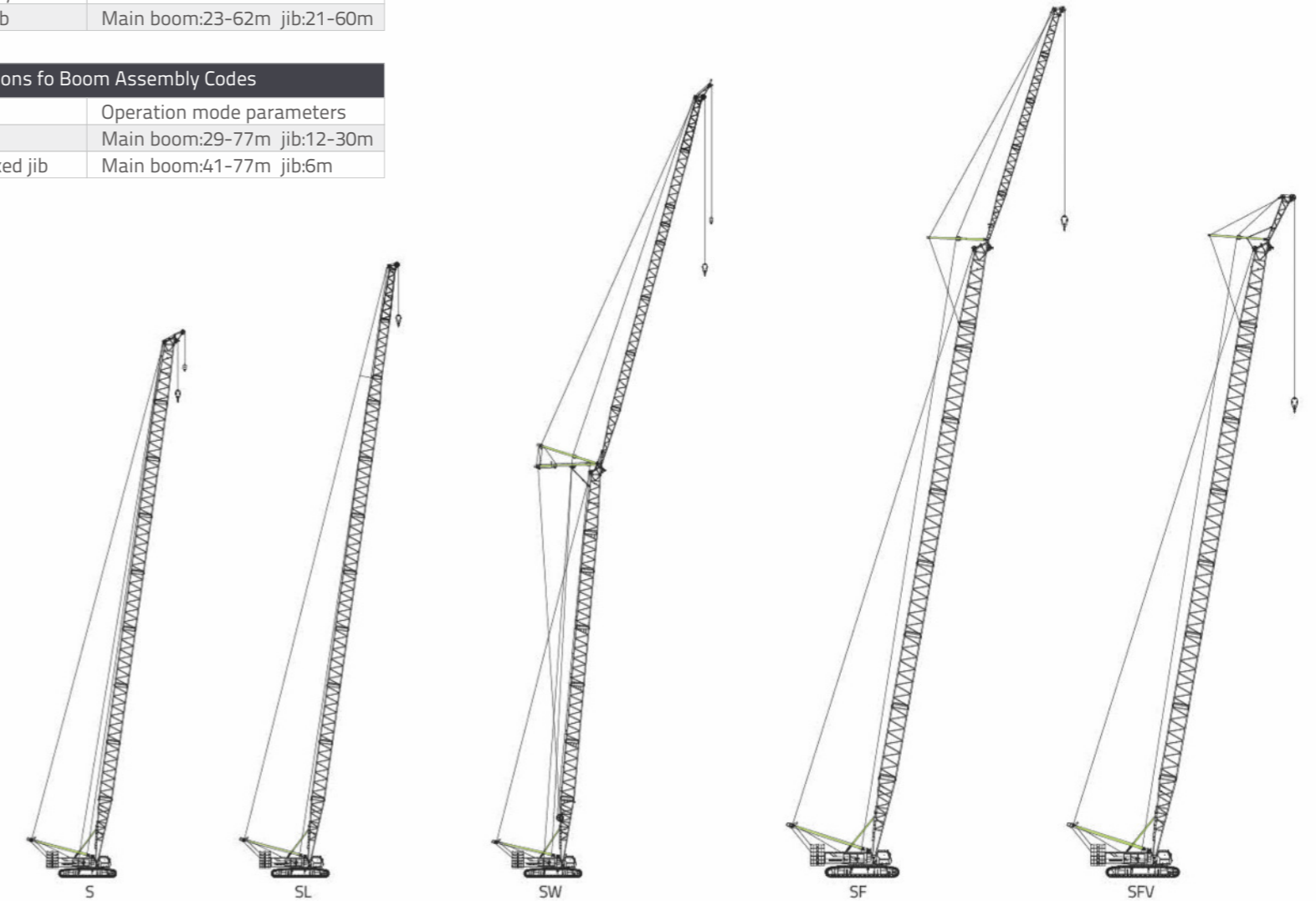
| | |
|--------------------------------|-----------|
| 30t hook blocks-1sheave | 1x |
| Weight | 1080kg |

| | |
|------------------------|-----------|
| 16t single hook | 1x |
| Weight | 530kg |

BOOM COMBINATION

| Descriptions fo Boom Assembly Codes | | |
|-------------------------------------|-----------------|-----------------------------|
| Code | Type | Operation mode parameters |
| S | Heavy duty boom | 20-83m |
| SL | Light dusy boom | 86-95m |
| SW | Luffing jib | Main boom:23-62m jib:21-60m |

| Descriptions fo Boom Assembly Codes | | |
|-------------------------------------|-----------------|-----------------------------|
| Code | Type | Operation mode parameters |
| SF | Fixed jib | Main boom:29-77m jib:12-30m |
| SFV | Heavy fixed jib | Main boom:41-77m jib:6m |



TECHNICAL DESCRIPTION



Engine

Engine type—US Cummins QSL9-C305
 Rated power —227 kw/2000 rpm
 Maximum output torque —1505 Nm/1400 rpm
 Fuel tank h— 700 L
 Exhaust emission complies with U.S. EPA Tier 3 and EU Stage III A Emission Standards.



Hydraulic system

The hydraulic system is composed of main pump, control valve, hydraulic motor, hydraulic oil tank, oil cooler and so on. World-class pump-control system and load sensing control system are applied in the hydraulic system. The main hydraulic elements are imported, which have the advantages of high efficiency, energy-saving, great reliability and long service life.
 Oil cooler for hydraulic system: aluminium cooler, with the cooling fan driven by a motor
 Working pressure—350bar
 Hydraulic oil tank capacity— 700 L



Hoisting winch

The crane is fitted with two hoisting winches: hoisting winch 1 and hoisting winch 2. Both of them are composed of built-in axial piston variable displacement motor, balance valve, reducer, normally closed brake as well as wire rope. They are controllable independently. The hoisting rope is imported rotation-resistant wire rope. The hoisting winches have infinitely variable speed, which greatly improves the working efficiency.

Main winch

Line pull-----max.150KN
 Rope diameter-----28mm
 Drum diameter-----650mm
 Rope speed-----0-130m/min
 Rope length-----480m

Aux.winch

Line pull-----max.136KN
 Rope diameter-----28mm
 Drum diameter-----650mm
 Rope speed-----0-120m/min
 Rope length-----300m



Boom winches

The derricking rope is imported non rotation resistant wire rope.
 Line pull-----max. 102KN
 Rope diameter-----24mm×2
 Drum diameter-----540mm×2
 Rope speed-----0-80m/min
 Rope length-----440m×2



Crawler

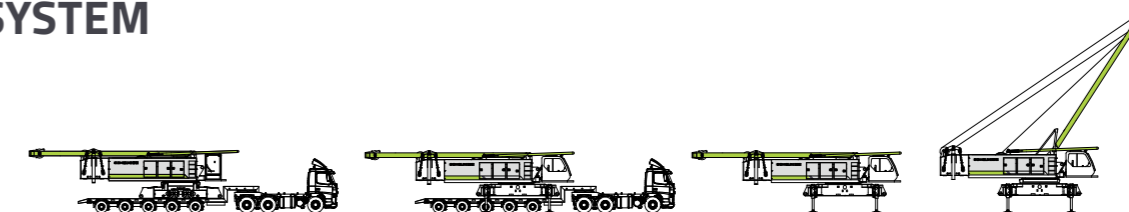
The dual variable displacement motor and dual reducer are outfitted on the travel gear. The hydraulic motor, traveling reducer and traveling brake valve are all imported. Hydraulic chain tensioning device.
 Track pads-----1200mm
 Drive speed-----0-1.0km/h



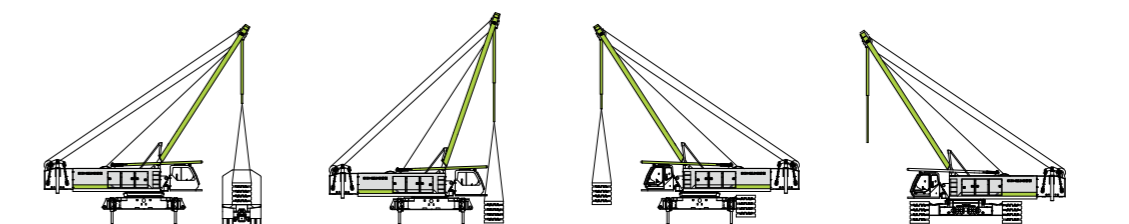
Swing

The slewing mechanism consists of built-in axial piston dual variable displacement motor, dual gear reducer, normally closed slewing brake and pinion gear as well as slewing ring. The superstructure can realize 360° continuous rotation via slewing ring which is driven by the pinion gear. The application of closed hydraulic system and controllable free swing function can reduce the impacts on the crane and ensure that the slewing movements are initiated and stopped more stably.
 Swing speed-----0-1.2r/min

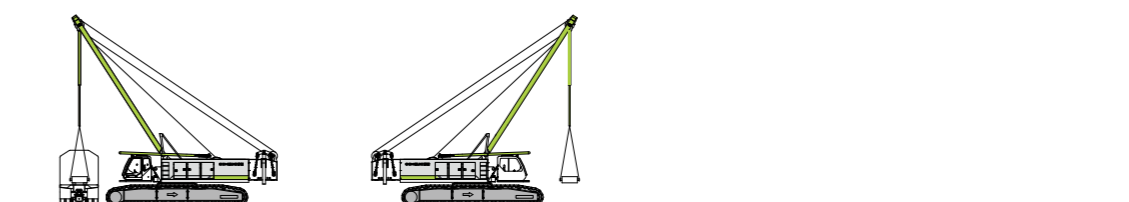
SELF ASSEMBLY SYSTEM



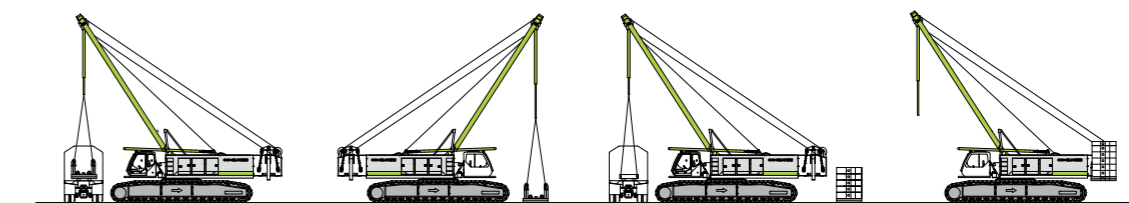
Unloading of basic machine



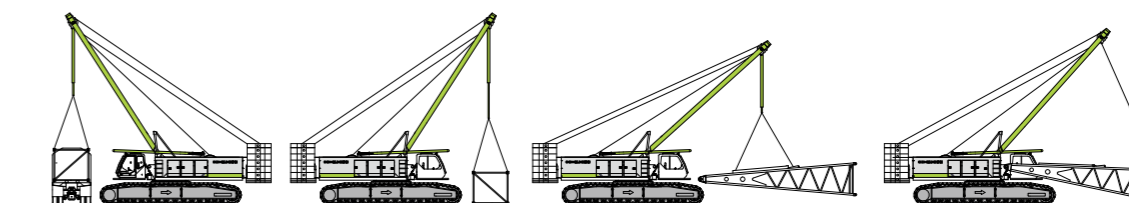
Unloading and assembly of crawler carrier



Unloading and assembly of central counterweight

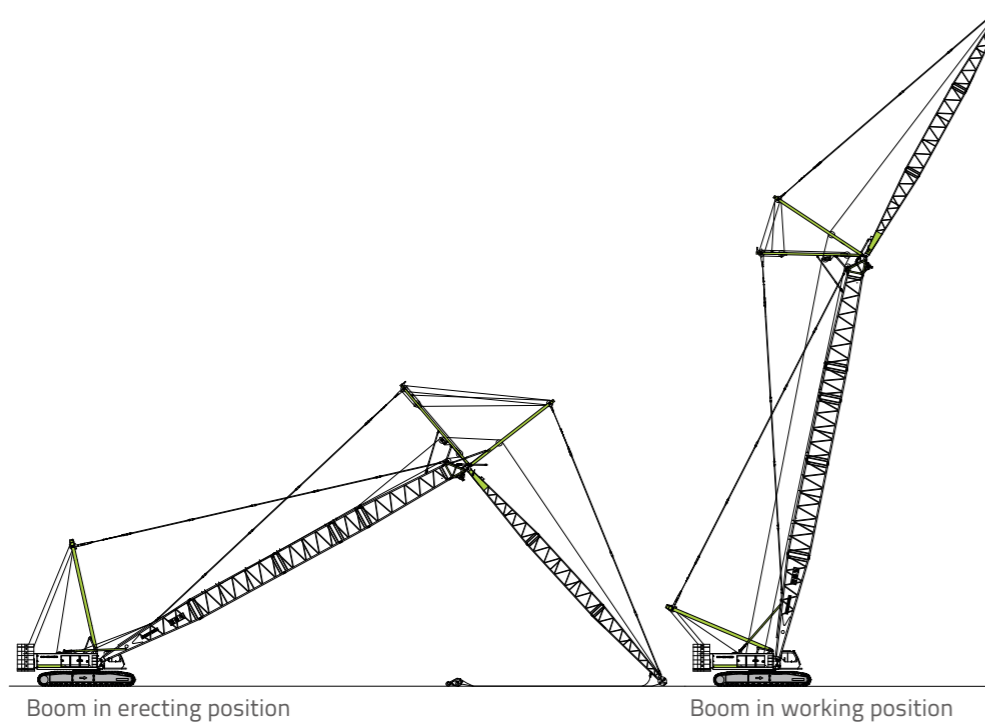
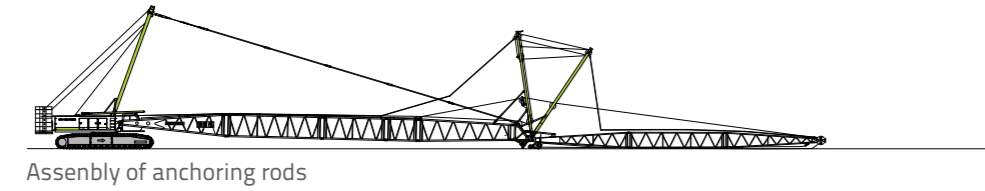
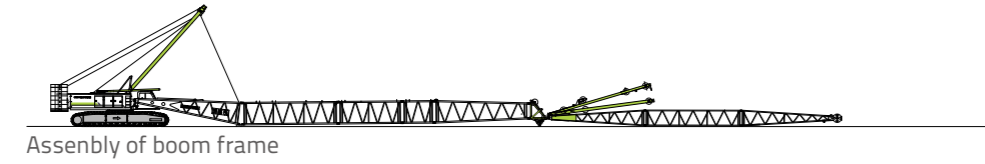


Unloading and assembly of rear counterweight



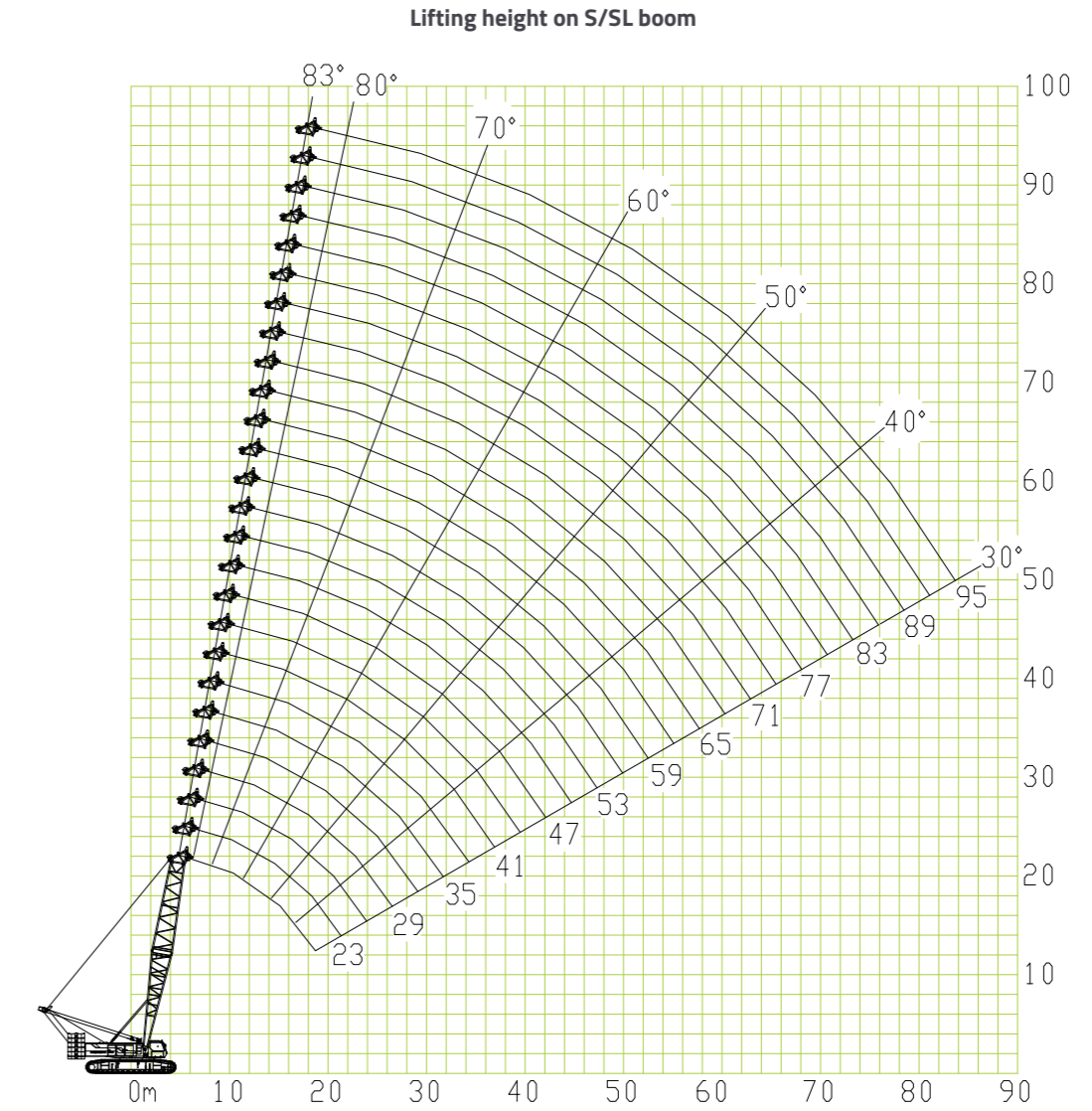
Unloading and assembly of frame

ERECTING OF BOOM TO WORKING POSITION



LIFTING PERFORMANCE

Lifting performance on S/SL boom



LIFTING PERFORMANCE

| S-boom length (m) | Lifting capacity on S boom | | | | | | | | | | |
|-------------------|----------------------------|-------|-------|-------|-------|-------|-------|-------|------|------|------|
| | 20 | 23 | 26 | 29 | 32 | 35 | 38 | 41 | 44 | 47 | 50 |
| Radius | | | | | | | | | | | |
| 5 | 260 | | | | | | | | | | |
| 6 | 227 | 200.8 | 193.1 | 184 | | | | | | | |
| 7 | 190.7 | 190.5 | 189 | 174 | 163 | 161 | | | | | |
| 8 | 175 | 166.6 | 164.5 | 162.5 | 158.4 | 149 | 149 | 135 | 118 | | |
| 9 | 134.6 | 134.5 | 134.5 | 134.3 | 134.3 | 134.2 | 134.1 | 124 | 112 | 112 | |
| 10 | 132 | 130 | 128 | 125.9 | 123.9 | 121.9 | 121.9 | 119.8 | 110 | 110 | 102 |
| 12 | 102.9 | 102.7 | 102.5 | 102.2 | 102 | 101.6 | 99.5 | 97.5 | 97.5 | 95.5 | 93.4 |
| 14 | 83 | 83 | 82.8 | 82.6 | 82.5 | 82.2 | 82.1 | 82 | 81.3 | 81.3 | 79.2 |
| 16 | 69.1 | 69 | 68.8 | 68.7 | 68.7 | 68.5 | 68.5 | 68.4 | 68.4 | 68.3 | 68.3 |
| 18 | 59.1 | 59 | 58.9 | 58.7 | 58.6 | 58.6 | 58.6 | 58.6 | 58.6 | 58.6 | 58.5 |
| 20 | | 51.5 | 51.4 | 51.4 | 51.4 | 51.4 | 51.4 | 51.2 | 51.1 | 51 | 50.8 |
| 22 | | | 45.6 | 45.6 | 45.5 | 45.5 | 45.4 | 45.3 | 45.1 | 45 | 44.8 |
| 24 | | | 40.7 | 40.7 | 40.7 | 40.6 | 40.4 | 40.3 | 40.2 | 40.1 | 39.9 |
| 26 | | | | 36.6 | 36.6 | 36.6 | 36.5 | 36.4 | 36.2 | 36.1 | 35.9 |
| 28 | | | | | 33.2 | 33.2 | 33.1 | 32.9 | 32.8 | 32.7 | 32.6 |
| 30 | | | | | | 30.3 | 30.3 | 30.2 | 30 | 29.9 | 29.6 |
| 32 | | | | | | | 27.9 | 27.7 | 27.6 | 27.5 | 27.4 |
| 34 | | | | | | | | 25.6 | 25.5 | 25.3 | 25.2 |
| 36 | | | | | | | | | 23.5 | 23.4 | 23 |
| 38 | | | | | | | | | | 21.7 | 21.4 |
| 40 | | | | | | | | | | | 21.1 |
| 42 | | | | | | | | | | | 18.3 |
| 44 | | | | | | | | | | | 16.7 |

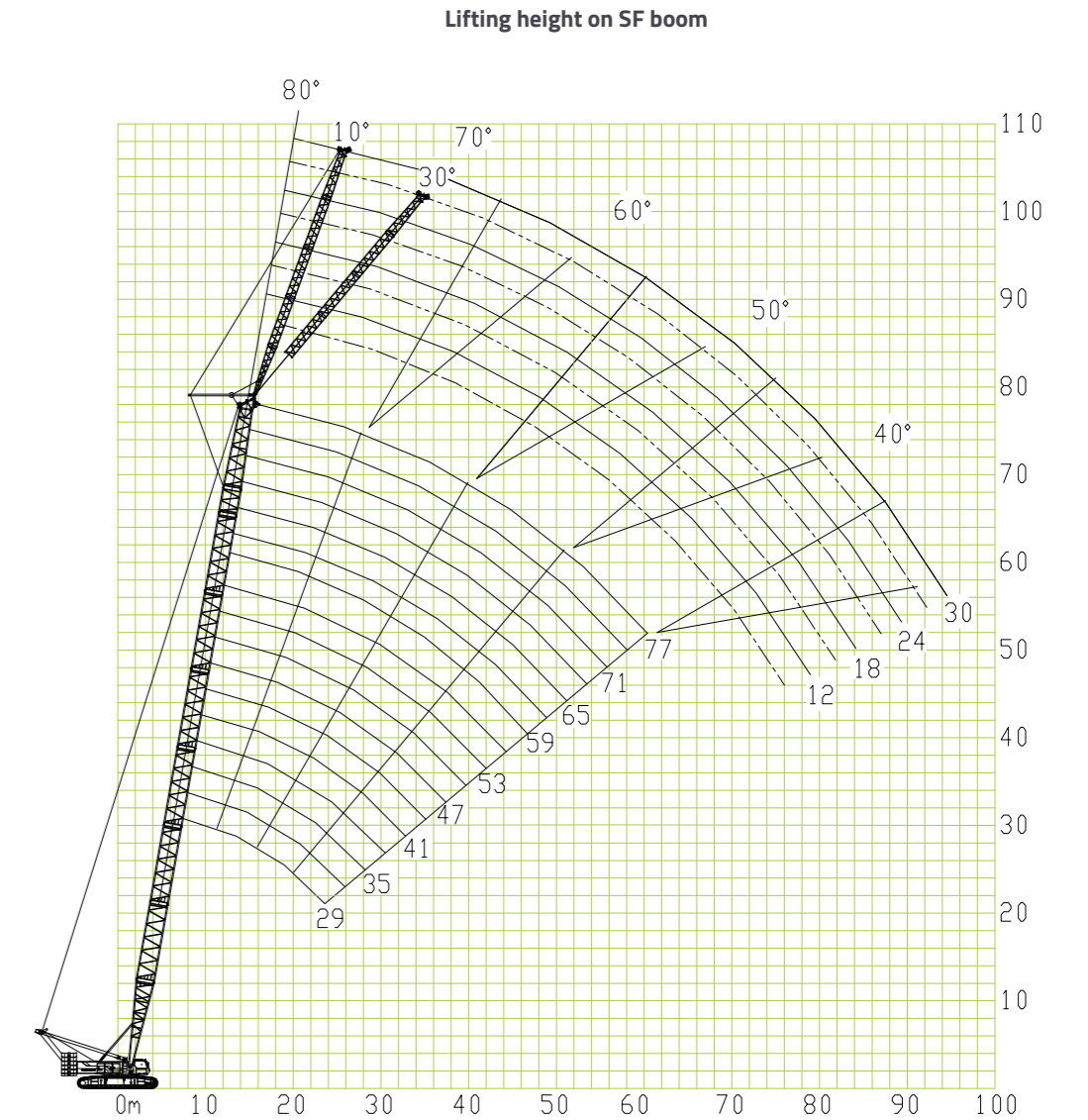
| S-boom length (m) | Lifting capacity on S boom | | | | | | | | | | | | |
|-------------------|----------------------------|------|------|------|------|------|------|------|------|------|------|-----|-----|
| | 53 | 56 | 59 | 62 | 65 | 68 | 71 | 74 | 77 | 80 | 83 | | |
| Radius | | | | | | | | | | | | | |
| 10 | 98 | 86 | | | | | | | | | | | |
| 12 | 93.4 | 85 | 83 | 80 | 70 | 68 | 60.9 | 55.4 | 50.3 | | | | |
| 14 | 79.2 | 77.2 | 77.2 | 70 | 69 | 66.5 | 59.2 | 53.8 | 49 | 43.2 | 39.4 | | |
| 16 | 67 | 67 | 67 | 65 | 65 | 64 | 57.4 | 52.2 | 47.4 | 41.9 | 38 | | |
| 18 | 58.3 | 58.2 | 58 | 57.2 | 56.6 | 55.9 | 54.8 | 50.4 | 44.7 | 40.6 | 36.8 | | |
| 20 | 50.7 | 50.5 | 50.3 | 50.2 | 49.4 | 48.9 | 48.4 | 47.7 | 43.4 | 39.4 | 35.8 | | |
| 22 | 44.6 | 44.5 | 44.4 | 44.1 | 43.8 | 43.3 | 42.7 | 42.1 | 41.5 | 38.1 | 34.5 | | |
| 24 | 39.8 | 39.5 | 39.4 | 39.3 | 39.1 | 38.5 | 38 | 37.4 | 37 | 36.5 | 33.4 | | |
| 26 | 35.7 | 35.6 | 35.4 | 35.2 | 34.8 | 34.5 | 34.2 | 33.6 | 33.2 | 32.6 | 32.1 | | |
| 28 | 32.4 | 32.2 | 31.8 | 31.5 | 31.2 | 30.8 | 30.5 | 30.1 | 29.7 | 29.3 | 28.9 | | |
| 30 | 29.5 | 29.2 | 28.8 | 28.4 | 28.1 | 27.8 | 27.3 | 27 | 26.7 | 26.3 | 25.9 | | |
| 32 | 26.5 | 26.5 | 26.1 | 25.8 | 25.3 | 25 | 24.6 | 24.4 | 23.9 | 23.6 | 23.3 | | |
| 34 | 24.5 | 24.2 | 23.8 | 23.5 | 23 | 22.7 | 22.4 | 21.9 | 21.6 | 21.3 | 21 | | |
| 36 | 22.5 | 22.1 | 21.7 | 21.4 | 21.1 | 20.6 | 20.3 | 20 | 19.6 | 19.2 | 18.9 | | |
| 38 | 20.5 | 20.3 | 20 | 19.5 | 19.2 | 18.9 | 18.5 | 18.1 | 17.8 | 17.4 | 17.1 | | |
| 40 | 19 | 18.7 | 18.3 | 18 | 17.7 | 17.2 | 16.9 | 16.6 | 16.1 | 15.8 | 15.5 | | |
| 42 | 17.6 | 17.2 | 16.9 | 16.6 | 16.1 | 15.8 | 15.5 | 15 | 14.7 | 14.4 | 14 | | |
| 44 | 16.3 | 15.9 | 15.6 | 15.2 | 14.8 | 14.5 | 14.1 | 13.8 | 13.4 | 13.1 | 13 | | |
| 46 | 15.1 | 14.8 | 14.4 | 14 | 13.7 | 13.3 | 12.9 | 12.6 | 12.4 | 12.2 | 12 | | |
| 48 | | 13.7 | 13.4 | 12.9 | 12.6 | 12.3 | 11.8 | 11.7 | 11.5 | 11.3 | 11 | | |
| 50 | | 12.7 | 12.4 | 11.9 | 11.6 | 11.3 | 11 | 10.9 | 10.7 | 10.5 | 10 | | |
| 52 | | | 11.4 | 11.1 | 10.7 | 10.3 | 10.3 | 10.1 | 9.9 | 9.7 | 9.3 | | |
| 54 | | | | 10.2 | 9.9 | 9.5 | 9.1 | 9.4 | 9.2 | 8.9 | 8.5 | | |
| 56 | | | | | 9.1 | 8.9 | 8.8 | 8.7 | 8.5 | 8.2 | 8.2 | | |
| 58 | | | | | | 8.4 | 8 | 8.3 | 8.1 | 7.9 | 7.6 | 7.3 | |
| 60 | | | | | | | 7.4 | 7.7 | 7.5 | 7.3 | 7 | 6.6 | |
| 62 | | | | | | | | 7.2 | 7 | 6.8 | 6.5 | 6.2 | |
| 64 | | | | | | | | | 6.5 | 6.3 | 6 | 5.6 | |
| 66 | | | | | | | | | | 5.7 | 5.8 | 5.5 | |
| 68 | | | | | | | | | | | 5.2 | 5.1 | |
| 70 | | | | | | | | | | | | 4.7 | |
| 72 | | | | | | | | | | | | | 3.8 |

NOTE:
When tip boom is used, the lifting capacity on tip boom is the same as that on heavy duty boom at the same radius, but its max. lifting capacity should not exceed 25 t.

LIFTING PERFORMANCE

| SL-boom length (m) | Lifting capacity on SL boom | | | |
|--------------------|-----------------------------|-----------|-----------|------|
| | 86 | 89 | 92 | 95 |
| Radius | | | | |
| 16 | 30.9/16.3 | 28.1/16.9 | 25.3/17.4 | |
| 18 | 30 | 27.3 | 24.9 | 21 |
| 20 | 29.9 | 25.9 | 24 | 20.4 |
| 22 | 27.9 | 24.6 | 22.8 | 19.7 |
| 24 | 27 | 23.9 | 21.7 | 19 |
| 26 | 26.1 | 23 | 20.6 | 18 |
| 28 | 25.2 | 22 | 19.8 | 17 |
| 30 | 23.1 | 21 | 19.2 | 16 |
| 32 | 21.2 | 20.3 | 18.3 | 15.8 |
| 34 | 19.4 | 18.6 | 17.7 | 14.4 |
| 36 | 17.8 | 17.1 | 16.5 | 13 |
| 38 | 16.3 | 15.7 | 15.7 | 11.9 |
| 40 | 14.9 | 14.6 | 14.5 | 10.8 |
| 42 | 13.8 | 13.5 | 13.4 | 9.8 |
| 44 | 12.7 | 12.4 | 12.3 | 9 |
| 46 | 11.7 | 11.5 | 11.4 | 8.2 |
| 48 | 10.8 | 10.5 | 10.4 | 7.4 |
| 50 | 9.9 | 9.6 | 9.5 | 6.7 |
| 52 | 9.1 | 8.8 | 8.7 | 6 |
| 54 | 8.4 | 8.1 | 8 | 5.3 |
| 56 | 7.7 | 7.4 | 7.3 | 4.8 |
| 58 | 7.1 | 6.7 | 6.6 | 4.3 |
| 60 | 6.5 | 6.1 | 6 | 3.8 |
| 62 | 5.9 | 5.6 | 5.5 | 3.3 |
| 64 | 5.4 | 5.1 | 5 | 2.9 |
| 66 | 5 | 4.6 | 4.5 | 2.7 |
| 68 | 4.5 | 4 | 3.9 | 2.6 |
| 70 | 4.1 | 3.4 | 2.8 | 2.5 |
| 72 | 3.7 | 2.8 | 2.7 | 2.4 |
| 74 | 3.4 | 2.7 | 2.6 | 2.3 |
| 76 | | 2.6 | 2.5 | 2.3 |
| 78 | | 2.5 | 2.4 | 2.2 |
| 80 | | | 2.2 | 2.1 |
| 82 | | | | 2 |

Lifting performance on SF boom



LIFTING PERFORMANCE

| F-jib angle (°) | 10.0 | 30.0 | 10.0 | 30.0 | 10.0 | 30.0 | 10.0 | 30.0 |
|-------------------|---------|------|------|------|------|------|------|------|
| S-boom length (m) | 29.0 | | | | | | | |
| F-jib length (m) | 12.0 | | 18.0 | | 24.0 | | 30.0 | |
| Radius | | | | | | | | |
| 10 | 34/10.5 | | | | | | | |
| 12 | 33.0 | | | | | | | |
| 14 | 32.5 | | 27.0 | | | | | |
| 16 | 32.0 | 28.8 | 26.8 | | 18.2 | | | |
| 18 | 31.3 | 26.8 | 25.7 | 20.5 | 18.1 | | 13.0 | |
| 20 | 30.7 | 25.6 | 24.9 | 20.1 | 17.8 | | 12.9 | |
| 22 | 30.0 | 24.5 | 24.2 | 19.1 | 17.3 | 14.1 | 12.6 | |
| 24 | 29.0 | 23.4 | 23.4 | 18.3 | 16.9 | 14.0 | 12.5 | |
| 26 | 28.0 | 22.4 | 22.8 | 17.5 | 16.6 | 13.9 | 12.3 | 10.0 |
| 28 | 27.0 | 21.6 | 22.1 | 16.8 | 16.2 | 13.6 | 12.0 | 9.9 |
| 30 | 25.5 | 20.9 | 21.2 | 16.2 | 15.9 | 13.0 | 11.7 | 9.8 |
| 32 | 24.0 | 20.2 | 20.7 | 15.6 | 15.5 | 12.5 | 11.5 | 9.6 |
| 34 | 22.6 | 19.6 | 20.0 | 15.0 | 15.2 | 12.0 | 11.2 | 9.4 |
| 36 | 21.7 | 19.2 | 18.9 | 14.6 | 14.9 | 11.6 | 10.9 | 9.2 |
| 38 | | 18.8 | 18.0 | 14.1 | 14.7 | 11.1 | 10.6 | 9.0 |
| 40 | | | 17.1 | 13.6 | 14.1 | 10.8 | 10.4 | 8.7 |
| 42 | | | 16.1 | 13.2 | 13.8 | 10.5 | 10.2 | 8.4 |
| 44 | | | | 12.9 | 13.5 | 10.1 | 10.0 | 8.2 |
| 46 | | | | | 13.0 | 9.8 | 9.8 | 8.0 |
| 48 | | | | | 12.2 | 9.6 | 9.5 | 7.8 |
| 50 | | | | | | 9.0 | 9.4 | 7.5 |
| 52 | | | | | | | 9.2 | 7.4 |
| 54 | | | | | | | 9.1 | 7.2 |
| 56 | | | | | | | | 7.2 |

| F-jib angle (°) | 10.0 | 30.0 | 10.0 | 30.0 | 10.0 | 30.0 | 10.0 | 30.0 |
|-------------------|------|------|------|------|------|------|------|------|
| S-boom length (m) | 38.0 | | | | | | | |
| F-jib length (m) | 12.0 | | 18.0 | | 24.0 | | 30.0 | |
| Radius | | | | | | | | |
| 14 | 32.5 | | | | | | | |
| 16 | 32.0 | 28.5 | 26.0 | | | | | |
| 18 | 31.3 | 28.1 | 24.9 | | 17.8 | | | |
| 20 | 30.7 | 26.9 | 24.2 | 19.8 | 17.5 | | 12.8 | |
| 22 | 30.0 | 25.9 | 23.5 | 19.5 | 17.1 | | 12.5 | |
| 24 | 29.0 | 24.8 | 22.7 | 19.2 | 16.6 | 14.0 | 12.3 | |
| 26 | 28.0 | 23.9 | 22.2 | 18.4 | 16.3 | 13.9 | 12.0 | |
| 28 | 27.0 | 23.0 | 21.4 | 17.7 | 15.9 | 13.7 | 11.7 | 9.7 |
| 30 | 25.5 | 22.2 | 20.6 | 17.1 | 15.6 | 13.5 | 11.3 | 9.6 |
| 32 | 24.0 | 21.5 | 20.1 | 16.5 | 15.3 | 13.2 | 11.1 | 9.4 |
| 34 | 22.6 | 20.8 | 19.4 | 15.9 | 14.9 | 12.7 | 10.8 | 9.3 |
| 36 | 21.7 | 20.3 | 18.3 | 15.4 | 14.6 | 12.3 | 10.6 | 9.1 |
| 38 | 20.9 | 19.5 | 17.5 | 14.9 | 14.4 | 11.8 | 10.3 | 8.9 |
| 40 | 19.4 | 18.6 | 16.6 | 14.3 | 13.9 | 11.4 | 10.1 | 8.8 |
| 42 | 18.3 | 17.4 | 15.7 | 13.7 | 13.6 | 11.1 | 9.9 | 8.6 |
| 44 | 17.1 | 16.5 | 14.9 | 12.8 | 13.3 | 10.7 | 9.7 | 8.6 |
| 46 | | 15.7 | 14.4 | 12.1 | 12.8 | 10.4 | 9.5 | 8.3 |
| 48 | | | 13.9 | 11.6 | 12.0 | 10.1 | 9.3 | 8.1 |
| 50 | | | 13.4 | 10.8 | 11.3 | 9.8 | 9.2 | 7.9 |
| 52 | | | | 10.3 | 10.7 | 9.5 | 8.9 | 7.7 |
| 54 | | | | | 10.1 | 9.2 | 8.8 | 7.5 |
| 56 | | | | | 9.6 | 9.1 | 8.6 | 7.4 |
| 58 | | | | | | 8.7 | 8.3 | 7.2 |
| 60 | | | | | | | 8.2 | 7.1 |
| 62 | | | | | | | 8.0 | 7.0 |
| 64 | | | | | | | | 7.0 |

LIFTING PERFORMANCE

| F-jib angle (°) | 10.0 | 30.0 | 10.0 | 30.0 | 10.0 | 30.0 | 10.0 | 30.0 |
|-------------------|------|------|------|------|------|------|------|------|
| S-boom length (m) | 47.0 | | | | | | | |
| F-jib length (m) | 12.0 | | 18.0 | | 24.0 | | 30.0 | |
| Radius | | | | | | | | |
| 14 | 32.5 | | | | | | | |
| 16 | 32.0 | | 25.2 | | | | | |
| 18 | 31.3 | 27.5 | 24.2 | | 17.3 | | | |
| 20 | 30.7 | 27.1 | 23.5 | | 17.0 | | 12.4 | |
| 22 | 30.0 | 26.9 | 22.8 | 19.2 | 16.6 | | 12.1 | |
| 24 | 29.0 | 26.0 | 22.0 | 18.9 | 16.2 | | 11.9 | |
| 26 | 28.0 | 25.0 | 21.5 | 18.7 | 15.9 | 13.7 | 11.6 | |
| 28 | 27.0 | 24.2 | 20.8 | 18.3 | 15.5 | 13.5 | 11.3 | |
| 30 | 25.5 | 23.1 | 20.0 | 17.9 | 15.2 | 13.3 | 11.0 | 9.3 |
| 32 | 24.0 | 22.2 | 19.5 | 17.3 | 14.8 | 13.1 | 10.8 | 9.1 |
| 34 | 22.3 | 21.3 | 18.8 | 16.8 | 14.5 | 12.8 | 10.5 | 9.0 |
| 36 | 21.4 | 20.5 | 17.8 | 16.2 | 14.2 | 12.5 | 10.3 | 8.8 |
| 38 | 20.5 | 19.1 | 17.0 | 15.7 | 14.0 | 12.0 | 10.0 | 8.7 |
| 40 | 19.1 | 18.2 | 16.1 | 15.2 | 13.5 | 11.7 | 9.8 | 8.6 |
| 42 | 17.8 | 17.1 | 15.2 | 14.2 | 13.2 | 11.5 | 9.6 | 8.4 |
| 44 | 16.6 | 16.2 | 14.5 | 13.3 | 12.9 | 11.0 | 9.4 | 8.4 |
| 46 | 15.4 | 15.4 | 14.0 | 12.4 | 12.4 | 10.6 | 9.2 | 8.2 |
| 48 | 14.4 | 14.6 | 13.5 | 11.7 | 11.6 | 10.2 | 9.0 | 8.1 |
| 50 | 13.5 | 13.7 | 13.0 | 11.3 | 11.0 | 9.8 | 8.9 | 7.9 |
| 52 | 12.6 | 12.8 | 12.5 | 10.5 | 10.4 | 9.5 | 8.7 | 7.8 |
| 54 | | 12.0 | 12.0 | 10.0 | 9.8 | 9.1 | 8.6 | 7.7 |
| 56 | | | 11.6 | 9.2 | 9.3 | 9.0 | 8.3 | 7.6 |
| 58 | | | 10.8 | 9.0 | 8.8 | 8.6 | 8.1 | 7.5 |
| 60 | | | | 8.0 | 8.4 | 8.3 | 8.0 | 7.4 |
| 62 | | | | | 8.0 | 8.0 | 7.8 | 7.2 |
| 64 | | | | | 7.5 | 7.5 | 7.5 | 7.1 |
| 66 | | | | | | 7.0 | 7.3 | 7.0 |
| 68 | | | | | | | 7.0 | 6.9 |
| 70 | | | | | | | 6.8 | 6.4 |
| 72 | | | | | | | | 5.6 |

| F-jib angle (°) | 10.0 | 30.0 | 10.0 | 30.0 | 10.0 | 30.0 | 10.0 | 30.0 |
|-------------------|------|------|------|------|------|------|------|------|
| S-boom length (m) | 56.0 | | | | | | | |
| F-jib length (m) | 12.0 | | 18.0 | | 24.0 | | 30.0 | |
| Radius | | | | | | | | |
| 16 | 32.0 | | | | | | | |
| 18 | 31.5 | | 25.1 | | | | | |
| 20 | 30.9 | 27.0 | 24.2 | | 16.8 | | | |
| 22 | 30.4 | 26.6 | 23.4 | | 16.6 | | 12.1 | |
| 24 | 28.3 | 26.5 | 22.7 | 18.9 | 16.4 | | 12 | |
| 26 | 27.0 | 26.0 | 22.0 | 18.7 | 16.1 | | 11.8 | |
| 28 | 26.3 | 23.5 | 21.4 | 18.6 | 15.8 | 13.5 | 11.5 | |
| 30 | 25.6 | 21.4 | 20.8 | 18.3 | 15.5 | 13.4 | 11.3 | |
| 32 | 24.8 | 19.5 | 20.2 | 18.1 | 15.2 | 13.2 | 11 | 9.2 |
| 34 | 23.5 | 18.6 | 19.7 | 17.8 | 15 | 13.1 | 10.8 | 9.1 |
| 36 | 21.6 | 18.1 | 19.2 | 17.1 | 14.7 | 12.9 | 10.5 | 8.9 |
| 38 | 19.9 | 17.6 | 18.7 | 15.8 | 14.4 | 12.8 | 10.3 | 8.8 |
| 40 | 18.4 | 17.2 | 17.9 | 14.7 | 14.2 | 12.6 | 10.2 | 8.6 |
| 42 | 17 | 16.8 | 17.0 | 13.7 | 13.5 | 12.4 | 9.9 | 8.6 |
| 44 | 15.8 | 16.2 | 16.2 | 12.7 | 12.6 | 12.1 | 9.7 | 8.4 |
| 46 | 14.7 | 15.1 | 15.1 | 12.5 | 11.8 | 11.9 | 9.5 | 8.3 |
| 48 | 13.7 | 14.0 | 14 | 12.1 | 11.1 | 11.4 | 9.3 | 8.3 |
| 50 | 12.7 | 13.0 | 13.1 | 11.9 | 10.4 | 10.8 | 9.2 | 8.1 |
| 52 | 11.9 | 12.1 | 12.2 | 11.6 | 9.8 | 10.2 | 9 | 8 |
| 54 | 11.1 | 11.3 | 11.4 | 11.4 | 9.2 | 9.6 | 8.9 | 7.8 |
| 56 | 10.4 | 10.6 | 10.7 | 11.1 | 9.0 | 9.0 | 8.7 | 7.7 |
| 58 | 9.7 | 9.9 | 10 | 10.4 | 8.8 | 8.6 | 8.4 | 7.7 |
| 60 | 9.1 | 9.2 | 9.4 | 9.7 | 8.6 | 8.0 | 8 | 7.5 |
| 62 | | | 8.8 | 9.1 | 8.5 | 7.6 | 7.5 | 7.4 |
| 64 | | | 8.3 | 8.5 | 8.3 | 7.3 | 7.1 | 7.4 |
| 66 | | | 7.7 | 7.9 | 8 | 7.2 | 6.8 | 7.1 |
| 68 | | | | | 7.5 | 7.1 | 6.5 | 6.7 |
| 70 | | | | | 7 | 7.0 | 6 | 6.4 |
| 72 | | | | | 6.6 | 6.5 | 5.5 | 6 |
| 74 | | | | | | | 5 | 5.6 |
| 76 | | | | | | | 4.4 | 5 |
| 78 | | | | | | | 3.6 | 4.4 |

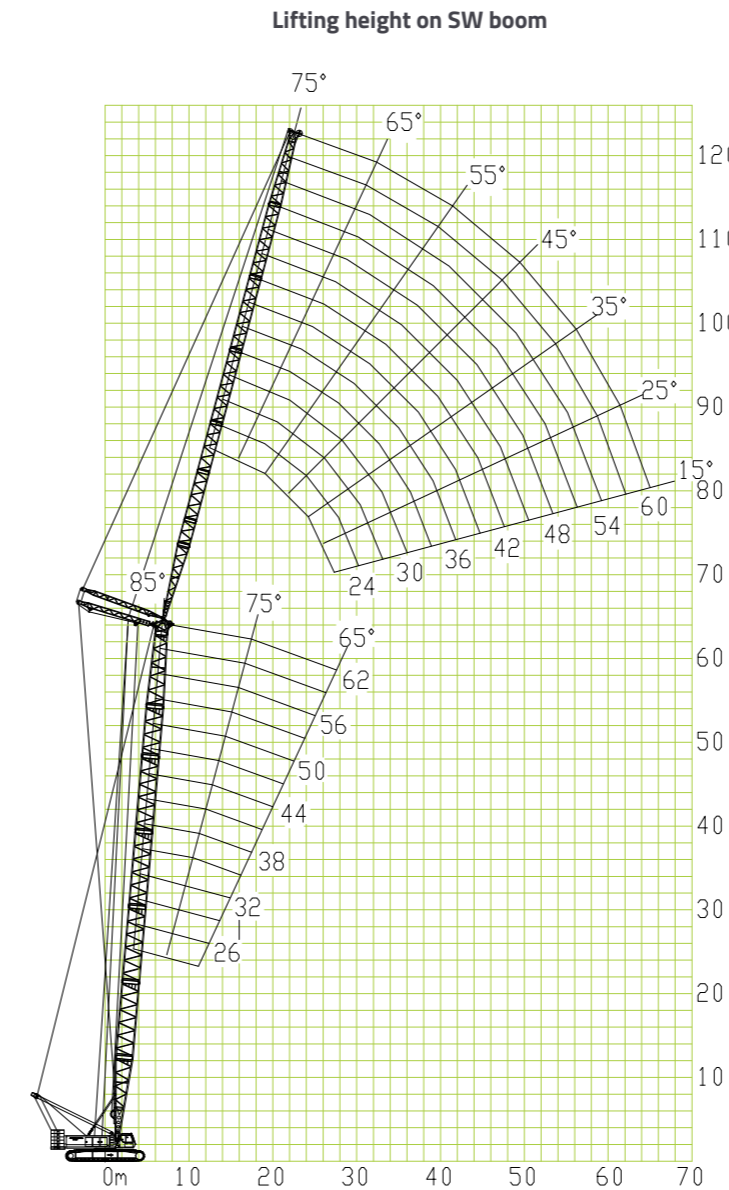
LIFTING PERFORMANCE

| F-jib angle (°) | 10.0 | 30.0 | 10.0 | 30.0 | 10.0 | 30.0 | 10.0 | 30.0 |
|-------------------|------|------|------|------|------|------|------|------|
| S-boom length (m) | 71.0 | | | | | | | |
| F-jib length (m) | 12.0 | | 18.0 | | 24.0 | | 30.0 | |
| Radius | | | | | | | | |
| 18 | 32.0 | | | | | | | |
| 20 | 31.8 | | 25.3 | | | | | |
| 22 | 30.4 | 27.0 | 24.5 | | 17.7 | | | |
| 24 | 27.5 | 26.5 | 23.8 | | 17.1 | | | |
| 26 | 27.0 | 25.3 | 23.2 | 18.9 | 16.7 | | 12.1 | |
| 28 | 26.3 | 22.9 | 22.5 | 18.7 | 16.1 | | 12 | |
| 30 | 25.8 | 21.1 | 21.8 | 18.6 | 15.6 | 13.5 | 11.7 | |
| 32 | 24.5 | 20.5 | 21.0 | 18.5 | 15.3 | 13.4 | 11.5 | |
| 34 | 22.3 | 19.9 | 19.8 | 17.9 | 15.5 | 13.3 | 11.3 | 9.2 |
| 36 | 20.4 | 19.4 | 19.2 | 16.5 | 16.2 | 13.2 | 11.1 | 9.1 |
| 38 | 18.7 | 19.0 | 18.8 | 15.2 | 16.5 | 13.1 | 10.8 | 9 |
| 40 | 17.2 | 17.8 | 17.6 | 14.4 | 16.2 | 12.9 | 10.7 | 8.9 |
| 42 | 15.8 | 16.4 | 16.2 | 14.0 | 16 | 12.9 | 10.5 | 8.8 |
| 44 | 14.6 | 15.1 | 15 | 13.7 | 15.3 | 12.6 | 10.3 | 8.6 |
| 46 | 13.4 | 14.0 | 13.8 | 13.4 | 14.2 | 11.7 | 10.1 | 8.6 |
| 48 | 12.4 | 12.9 | 12.8 | 13.1 | 13.1 | 10.9 | 9.9 | 8.5 |
| 50 | 11.5 | 11.9 | 11.9 | 12.6 | 12.2 | 10.2 | 9.8 | 8.4 |
| 52 | 10.6 | 11.0 | 11 | 11.7 | 11.3 | 9.5 | 9.2 | 8.3 |
| 54 | 9.8 | 10.2 | 10.2 | 10.8 | 10.5 | 8.9 | 8.6 | 8.3 |
| 56 | 9.1 | 9.5 | 9.5 | 10.0 | 9.8 | 8.4 | 8.1 | 8.1 |
| 58 | 8.4 | 8.8 | 8.8 | 9.3 | 9.1 | 7.9 | 7.7 | 8 |
| 60 | 7.8 | 8.1 | 8.2 | 8.6 | 8.4 | 7.7 | 7.2 | 7.7 |
| 62 | 7.2 | 7.5 | 7.6 | 8.0 | 7.8 | 7.6 | 6.8 | 7.3 |
| 64 | 6.7 | 6.9 | 7 | 7.4 | 7.2 | 7.6 | 6.4 | 6.8 |
| 66 | 6.1 | 6.4 | 6.4 | 6.8 | 6.6 | 7.4 | 6 | 6.5 |
| 68 | 5.6 | 5.8 | 5.8 | 6.2 | 6 | 7.3 | 5.6 | 6.1 |
| 70 | 5 | 5.2 | 5.3 | 5.6 | 5.5 | 6.7 | 5.3 | 5.7 |
| 72 | 4.6 | 4.7 | 4.8 | 5.1 | 5 | 6.2 | 5 | 5.4 |
| 74 | 4.3 | 4.3 | 4.4 | 4.6 | 4.6 | 5.8 | 4.7 | 5.1 |
| 76 | | | 4.1 | 4.3 | 4.3 | 5.3 | 4.4 | 4.8 |
| 78 | | | 3.9 | 4.0 | 4 | 4.9 | 4.1 | 4.4 |
| 80 | | | | 3.7 | 3.8 | 4.4 | 3.8 | 4.2 |
| 82 | | | | | 3.5 | 4.1 | 3.6 | 3.9 |
| 84 | | | | | 3.3 | 3.7 | 3.3 | 3.7 |
| 86 | | | | | | 3.4 | | 3.5 |
| 88 | | | | | | | | 3.2 |

| F-jib angle (°) | 10.0 | 30.0 | 10.0 | 30.0 | 10.0 | 30.0 | 10.0 | 30.0 | |
|-------------------|------|------|------|------|------|------|------|------|-----|
| S-boom length (m) | 77.0 | | | | | | | | |
| F-jib length (m) | 12.0 | | 18.0 | | 24.0 | | 30.0 | | |
| Radius | | | | | | | | | |
| 20 | 32.0 | | | | | | | | |
| 22 | 31.8 | | 25.0 | | | | | | |
| 24 | 30.4 | 22.7 | 24.2 | | 14.3 | | | | |
| 26 | 27.5 | 22.4 | 23.6 | | 13.9 | | 8.3 | | |
| 28 | 27.0 | 22.1 | 23.0 | 16.2 | 13.6 | | 8.0 | | |
| 30 | 26.0 | 21.6 | 22.4 | 16.1 | 13.3 | | 7.8 | | |
| 32 | 23.9 | 21.0 | 22.0 | 15.8 | 13.0 | 9.5 | 7.5 | | |
| 34 | 21.8 | 20.4 | 21.5 | 15.7 | 12.7 | 9.4 | 7.4 | | |
| 36 | 19.9 | 19.9 | 20.4 | 15.5 | 12.4 | 9.2 | 7.1 | 6.9 | |
| 38 | 18.2 | 19.4 | 18.6 | 15.2 | 12.1 | 9.0 | 6.7 | 6.8 | |
| 40 | 16.7 | 17.9 | 17.1 | 14.8 | 11.9 | 8.9 | 6.5 | 6.7 | |
| 42 | 15.3 | 16.3 | 15.7 | 14.4 | 11.6 | 8.8 | 6.4 | 6.7 | |
| 44 | 14.1 | 15.0 | 14.5 | 14.0 | 11.4 | 8.6 | 6.1 | 6.5 | |
| 46 | 12.9 | 13.8 | 13.3 | 13.8 | 11.2 | 8.5 | 6.0 | 6.5 | |
| 48 | 11.9 | 12.6 | 12.3 | 13.4 | 10.9 | 8.4 | 5.9 | 6.4 | |
| 50 | 11 | 11.6 | 11.4 | 12.2 | 10.7 | 8.3 | 5.8 | 6.3 | |
| 52 | 10.1 | 10.7 | 10.5 | 11.2 | 10.4 | 8.2 | 5.5 | 6.3 | |
| 54 | 9.3 | 9.8 | 9.7 | 10.4 | 10 | 8.0 | 5.4 | 6.2 | |
| 56 | 8.6 | 9.0 | 9 | 9.6 | 9.2 | 8.0 | 5.3 | 6.1 | |
| 58 | 7.9 | 8.3 | 8.3 | 8.9 | 8.4 | 7.9 | 5.2 | 6.1 | |
| 60 | 7.3 | 7.6 | 7.6 | 8.1 | 7.7 | 7.8 | 5.0 | 6.1 | |
| 62 | 6.7 | 7.0 | 6.9 | 7.5 | 7.1 | 7.7 | 4.9 | 5.6 | |
| 64 | 6 | 6.4 | 6.3 | 6.8 | 6.5 | 7.7 | 4.8 | 5.1 | |
| 66 | 5.5 | 5.8 | 5.7 | 6.2 | 5.9 | 7.3 | 4.7 | 4.7 | |
| 68 | 4.9 | 5.2 | 5.1 | 5.6 | 5.3 | 6.8 | 4.6 | 4.3 | |
| 70 | 4.5 | 4.7 | 4.6 | 5.0 | 4.8 | 6.2 | 4.6 | 3.9 | |
| 72 | 4.2 | 4.2 | 4.3 | 4.6 | 4.4 | 5.8 | 4.4 | 3.5 | |
| 74 | 3.9 | 3.8 | 4 | 4.3 | 4.2 | 5.3 | 4.3 | 3.4 | |
| 76 | 3.6 | 3.4 | 3.7 | 4.0 | 3.9 | 4.8 | 4.2 | 3.4 | |
| 78 | 3.3 | 3.0 | 3.4 | 3.7 | 3.6 | 4.4 | 4.2 | 3.4 | |
| 80 | | 2.6 | 3.0 | 3.2 | 3.4 | 4.0 | 4.0 | 3.2 | |
| 82 | | | 2.6 | 2.9 | 3.1 | 3.6 | 3.6 | 3.2 | |
| 84 | | | 2.3 | 2.5 | 2.8 | 3.2 | 3.2 | 3.2 | |
| 86 | | | | 2.2 | 2.5 | 2.9 | 3.0 | 3.2 | |
| 88 | | | | | 2.2 | 2.5 | 2.6 | 3.1 | |
| 90 | | | | | | 2.0 | 2.2 | 2.4 | 2.8 |
| 92 | | | | | | | 1.9 | 2.0 | 2.4 |

LIFTING PERFORMANCE

Lifting height on SW boom



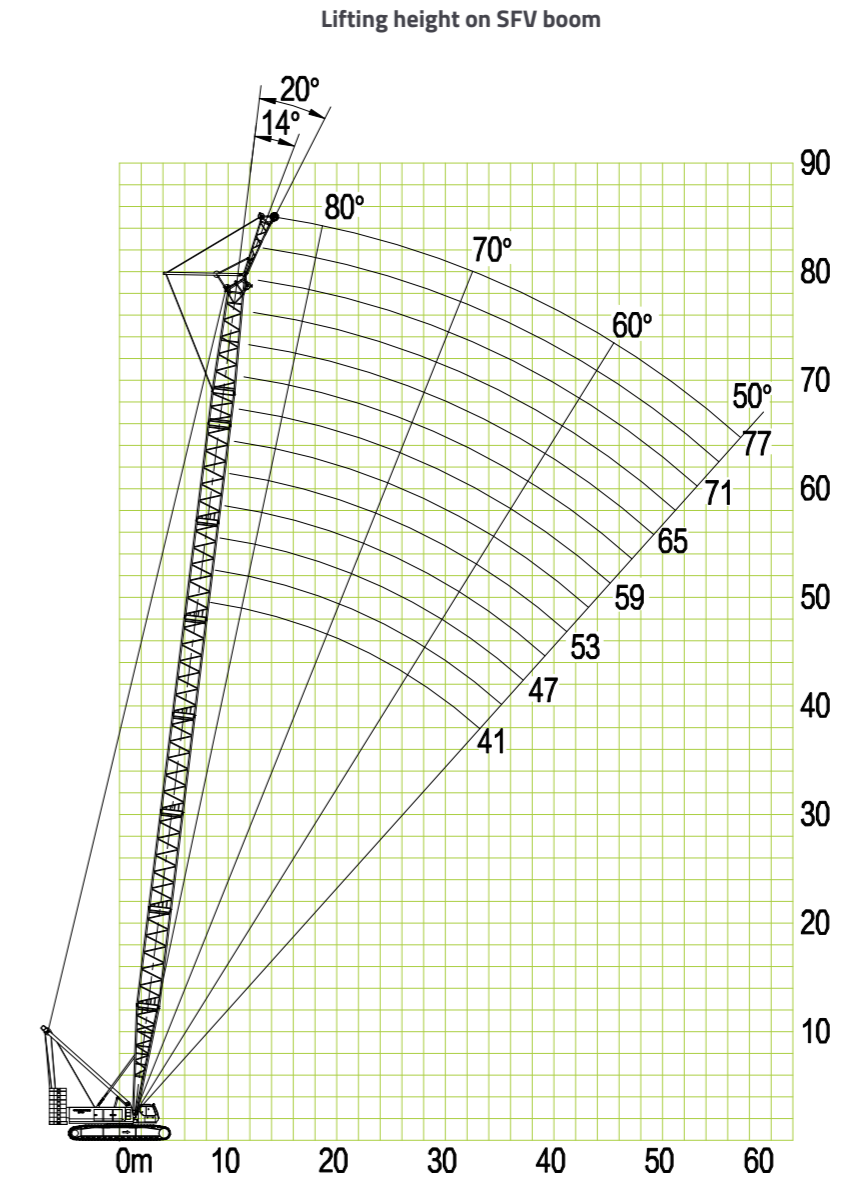
| S-boom length(m) | 29 | | | | | | | | | | | | | | | | | |
|------------------|------|------|------|------|------|------|------|------|------|------|------|------|------|------|-----|------|-----|-----|
| W-jib length(m) | 27 | | | 33 | | | 39 | | | 45 | | | 51 | | | 60 | | |
| S-boom angle | 85° | 75° | 65° | 85° | 75° | 65° | 85° | 75° | 65° | 85° | 75° | 65° | 85° | 75° | 65° | 85° | 75° | 65° |
| Radius(m) | | | | | | | | | | | | | | | | | | |
| 14 | 68.1 | | | 57.3 | | | | | | | | | | | | | | |
| 16 | 62.5 | | | 54 | | | 41.9 | | | | | | | | | | | |
| 18 | 57.2 | | | 50.3 | | | 40.8 | | | 31.2 | | | | | | | | |
| 20 | 53.3 | | | 47 | | | 39.7 | | | 29.8 | | | 22.3 | | | | | |
| 22 | 48.8 | | | 43.9 | | | 38.3 | | | 29.1 | | | 21.7 | | | 12 | | |
| 24 | 44.1 | 42.1 | | 40.9 | | | 37 | | | 28.6 | | | 21.1 | | | 11.4 | | |
| 26 | 40 | 38.4 | | 37.9 | 38 | | 35.4 | | | 27.5 | | | 20.5 | | | 11 | | |
| 28 | 33.1 | 35.1 | | 34.3 | 34.9 | | 33.6 | 32.5 | | 26.9 | | | 20.1 | | | 10.7 | | |
| 30 | 25.6 | 32.3 | | 31.4 | 32.1 | | 30.8 | 32 | | 26.3 | | | 19.6 | | | 10.3 | | |
| 32 | | 29.9 | 27.3 | 28.9 | 29.8 | | 27.2 | 29.6 | | 24.8 | 27 | | 19.1 | 16.7 | | 10 | | |
| 34 | | 27.9 | 25.3 | 25.6 | 27.7 | | 25.1 | 26.9 | | 22.8 | 26.4 | | 18.6 | 16.5 | | 9.7 | | |
| 36 | | 26 | 23.6 | 20.6 | 25.9 | 23 | 23.3 | 24.9 | | 21.1 | 24.5 | | 18.3 | 16.3 | | 9.4 | | |
| 38 | | | 22.1 | 24.3 | 21.5 | 21.7 | 23.3 | 19.6 | 19.6 | 22.8 | | | 17.2 | 15.8 | | 9.1 | 9.8 | |
| 40 | | | 20.7 | 22.9 | 20.2 | 20 | 21.8 | 19.5 | 18.5 | 21.3 | | | 16 | 15.4 | | 8.9 | 9.4 | |
| 42 | | | | | 18.9 | 16.3 | 20.4 | 18.4 | 17.4 | 20 | 17 | 15 | 15 | | | 8.6 | 9.2 | |
| 44 | | | | | 17.7 | 19.3 | 17.2 | 16.5 | 18.7 | 16.7 | 14.1 | 14.7 | | | | 8.4 | 8.9 | |
| 46 | | | | | 16.8 | 18.2 | 16.3 | 15.9 | 17.7 | 15.8 | 12.1 | 14.2 | 14.5 | | | 8.1 | 8.6 | |
| 48 | | | | | | 15.3 | 13.1 | 16.7 | 14.8 | 11.3 | 12.8 | 14.3 | 7.7 | 8.4 | | | | |
| 50 | | | | | | 14.5 | | 15.7 | 14 | 10.8 | 12.3 | 13.4 | 7.4 | 8.2 | 8.6 | | | |
| 52 | | | | | | | 15 | 13.2 | 10.2 | 11.7 | 12.7 | 6.9 | 7.9 | 8.4 | | | | |
| 54 | | | | | | | | 12.5 | 10 | 11.1 | 12.1 | 6.6 | 7.6 | 8.2 | | | | |
| 56 | | | | | | | | 11.9 | 10.6 | 11.3 | 6.3 | 7.1 | 7.9 | | | | | |
| 58 | | | | | | | | 11.3 | 10.1 | 10.8 | 6.1 | 6.8 | 7.6 | | | | | |
| 60 | | | | | | | | | | 10.3 | 5.7 | 6.5 | 7.2 | | | | | |
| 62 | | | | | | | | | | | 9.8 | 5.5 | 6.2 | 6.8 | | | | |
| 64 | | | | | | | | | | | 9.2 | | 5.9 | 6.5 | | | | |
| 66 | | | | | | | | | | | | | 5.6 | 6 | | | | |
| 68 | | | | | | | | | | | | | | 6 | | | | |
| 70 | | | | | | | | | | | | | | | | | | 5.6 |

LIFTING PERFORMANCE

| S-boom length(m) | 62 | | | | | | | | | | | | | | | | | | |
|------------------|------|------|------|------|------|------|------|------|------|------|------|------|------|------|------|------|------|-----|--|
| W-jib length(m) | 27 | | | 33 | | | 39 | | | 45 | | | 51 | | | 60 | | | |
| S-boom angle | 85° | 75° | 65° | 85° | 75° | 65° | 85° | 75° | 65° | 85° | 75° | 65° | 85° | 75° | 65° | 85° | 75° | 65° | |
| Radius(m) | | | | | | | | | | | | | | | | | | | |
| 14 | | | | | | | | | | | | | | | | | | | |
| 16 | 50.6 | | | | | | | | | | | | | | | | | | |
| 18 | 45 | | | 44.4 | | | | | | | | | | | | | | | |
| 20 | 40.6 | | | 39.7 | | | 38.8 | | | | | | | | | | | | |
| 22 | 36.9 | | | 36 | | | 35.3 | | | | 30.7 | | | | 22.6 | | | | |
| 24 | 33.8 | | | 32.8 | | | 32.2 | | | 29.4 | | | 21.9 | | | 14.8 | | | |
| 26 | 30.9 | | | 30.2 | | | 30 | | | 28.2 | | | 21.3 | | | 13.2 | | | |
| 28 | 28.8 | | | 28.1 | | | 27.5 | | | 26.5 | | | 20.7 | | | 12.7 | | | |
| 30 | 26.9 | | | 26.3 | | | 25.6 | | | 25 | | | 20.2 | | | 12.4 | | | |
| 32 | 25 | 26.8 | | 24.4 | | | 23.8 | | | 23.4 | | | 19.8 | | | 12 | | | |
| 34 | | 25 | | 22.8 | 24.4 | | 22.2 | | | 21.9 | | | 19.3 | | | 11.7 | | | |
| 36 | | 23.1 | | 21.4 | 22.5 | | 20.9 | 22.2 | | 20.3 | | | 18.8 | | | 11.3 | | | |
| 38 | | 21.6 | | 20.2 | 21.1 | | 19.7 | 20.6 | | 19.1 | 20.3 | | 18.4 | | | 11 | | | |
| 40 | | 20.3 | | | 20 | | 18.4 | 19.5 | | 17.9 | 19.2 | | 17.5 | | | 10.7 | | | |
| 42 | | 19.4 | | | 19.1 | | 17.5 | 18.2 | | 17 | 18.1 | | 16.6 | 17.5 | | 10.5 | | | |
| 44 | | 18.4 | | | 18.1 | | 16.6 | 17.1 | | 16 | 16.9 | | 15.6 | 16.4 | | 10.3 | | | |
| 46 | | | 14.7 | | 17.2 | | | 16 | | 15.2 | 16 | | 14.8 | 15.6 | | 10 | 11.4 | | |
| 48 | | | 14.3 | | 16.3 | 13.2 | | 15.2 | | 14.6 | 15.3 | | 13.9 | 15 | | 9.6 | 11 | | |
| 50 | | | 13.4 | | 15.5 | 12.6 | | 14.6 | | 14.1 | 14.5 | | 11.7 | 14.4 | | 9.1 | 10.8 | | |
| 52 | | | 12.8 | | | 12.1 | | 14.2 | 11.5 | | 13.8 | | 11.1 | 13.8 | | 8.6 | 10.5 | | |
| 54 | | | 12.2 | | | 11.5 | | 13.8 | 10.9 | | 13.2 | | 10.5 | 13.1 | | 8.1 | 10.3 | | |
| 56 | | | 11.8 | | | 10.9 | | 13.1 | 10.3 | | 12.6 | 10.3 | 10 | 12.5 | | 7.7 | 10 | | |
| 58 | | | | | | 10.3 | | | 9.8 | | 12.2 | 9.7 | | 11.9 | | 7.2 | 9.8 | | |
| 60 | | | | | | 9.8 | | | 9.5 | | 11.9 | 9.4 | | 11.3 | | 6.8 | 9.4 | | |
| 62 | | | | | | | | | 8.9 | | | 8.8 | 10.6 | 8.4 | 6.2 | 8.8 | | | |
| 64 | | | | | | | | | 8.6 | | | 8.4 | 10.3 | 7.8 | 6.2 | 8.4 | 6.9 | | |
| 66 | | | | | | | | | | | | 8.1 | 10 | 7.5 | | 7.9 | 6.6 | | |
| 68 | | | | | | | | | | | | 7.8 | | 7.2 | | 7.5 | 6.3 | | |
| 70 | | | | | | | | | | | | 7.2 | | 6.6 | | 7.1 | 6 | | |
| 72 | | | | | | | | | | | | 6.9 | | 6.3 | | 6.7 | 5.7 | | |
| 74 | | | | | | | | | | | | | | 5.9 | | 6.3 | 5.5 | | |
| 76 | | | | | | | | | | | | | | 5.8 | | 6 | 5.2 | | |
| 78 | | | | | | | | | | | | | | 5.6 | | | 4.9 | | |
| 80 | | | | | | | | | | | | | | 5.3 | | | 4.6 | | |
| 82 | | | | | | | | | | | | | | | | | 4.5 | | |
| 84 | | | | | | | | | | | | | | | | | 4.3 | | |

LIFTING PERFORMANCE

Lifting performance on SFV boom



LIFTING PERFORMANCE

| Radius (m) | S-boom length (m) | | | | | | | |
|------------|-------------------|---------|-------|---------|---------|---------|---------|---------|
| | 41 | | 44 | | 47 | | 50 | |
| | FV-jib angle (°) | | | | | | | |
| | 14 | 20 | 14 | 20 | 14 | 20 | 14 | 20 |
| 10 | 60.0 | 56.9 | 60.0 | 56.9/11 | 60.0/11 | 56.9/11 | | |
| 12 | 60.0 | 54.7 | 60.0 | 54.7 | 60.0 | 54.7 | 60.0/11 | |
| 14 | 60.0 | 50.3 | 60.0 | 52.5 | 60.0 | 52.5 | 60 | 56.9 |
| 16 | 58 | 48.1 | 59.1 | 48.1 | 60.0 | 50.3 | 60 | 52.5 |
| 18 | 54.7 | 45.9 | 56.9 | 45.9 | 56.9 | 48.1 | 60 | 50.3 |
| 20 | 51.4 | 43.8 | 52.4 | 43.8 | 51.9 | 45.9 | 58 | 48.1 |
| 22 | 47.2 | 41.6 | 46.7 | 42.7 | 46.1 | 43.8 | 51.2 | 45.9 |
| 24 | 42 | 39.4 | 41.9 | 41.6 | 41.5 | 41.6 | 45.6 | 43.8 |
| 26 | 37.8 | 37.8 | 37.7 | 37.7 | 37.4 | 37.5 | 40.9 | 41.1 |
| 28 | 34.1 | 34.2 | 34.1 | 34.1 | 33.8 | 34 | 37 | 37.1 |
| 30 | 31.1 | 31.1 | 31 | 31.1 | 30.8 | 30.8 | 33.6 | 33.7 |
| 32 | 28.5 | 28.5 | 28.4 | 28.4 | 28.1 | 28.2 | 30.6 | 30.6 |
| 34 | 27.3/33 | 27.3/33 | 26 | 26 | 25.8 | 25.9 | 27.8 | 28 |
| 36 | | | 25/35 | 25/35 | 23.9 | 23.9 | 25.5 | 25.6 |
| 38 | | | | | 22.9/37 | 22.9/37 | 23.6 | 23.6 |
| 40 | | | | | | | 21.7/39 | 21.8/39 |
| 42 | | | | | | | | |

CAUTION:

- The lifting capacity is given in metric tons, and the sign '* / *' indicates 'lifting capacity / radius'. The values in grey are determined by boom strength, while the rest values are determined by crane stability.
- For SFV boom configuration, S-boom angle = 50° – 83°, FV-jib angle = 14° or 20°, and FV-jib length = 6 m.

LIFTING PERFORMANCE

| Radius (m) | S-boom length (m) | | | | | | | |
|------------|-------------------|---------|---------|---------|---------|---------|---------|---------|
| | 53 | | 56 | | 59 | | 62 | |
| | FV-jib angle (°) | | | | | | | |
| | 14 | 20 | 14 | 20 | 14 | 20 | 14 | 20 |
| 11 | 60.0 | | | | | | | |
| 12 | 60.0 | 56.9 | 60.0 | 56.9 | 60.0 | 56.9/13 | 60.0 | 56.9/13 |
| 14 | 60.0 | 54.7 | 60.0 | 54.7 | 60.0 | 54.7 | 60.0 | 55.8 |
| 16 | 60.0 | 51.4 | 60.0 | 52.5 | 59.1 | 52.5 | 56.9 | 52.5 |
| 18 | 57.4 | 49.2 | 56.9 | 50.3 | 55.8 | 50.3 | 53.6 | 50.3 |
| 20 | 51.2 | 47 | 50.3 | 48.1 | 49.2 | 48.1 | 48.1 | 49.2 |
| 22 | 45.6 | 44.8 | 44.8 | 44.8 | 43.8 | 43.8 | 43.2 | 43.8 |
| 24 | 40.9 | 41.1 | 40.4 | 40.5 | 39.9 | 40 | 39.4 | 39.4 |
| 26 | 37 | 37.1 | 36.6 | 36.7 | 36 | 36.1 | 35 | 35.5 |
| 28 | 33.4 | 33.4 | 33.2 | 33.3 | 32.7 | 32.8 | 31.7 | 32.3 |
| 30 | 30.3 | 30.4 | 30.1 | 30.1 | 29.5 | 29.9 | 29.5 | 29.5 |
| 32 | 27.7 | 27.7 | 27.4 | 27.5 | 27.1 | 27.3 | 27 | 27 |
| 34 | 25.4 | 25.4 | 25.1 | 25.2 | 24.8 | 25 | 24.7 | 24.7 |
| 36 | 23.3 | 23.4 | 23.2 | 23.2 | 22.8 | 22.9 | 22.6 | 22.6 |
| 38 | 21.5 | 21.5 | 21.3 | 21.4 | 21 | 21.1 | 20.8 | 20.8 |
| 40 | 19.9 | 19.9 | 19.8 | 19.8 | 19.5 | 19.5 | 19.2 | 19.2 |
| 42 | 19.2/41 | 19.2/41 | 18.3 | 18.3 | 18 | 18 | 17.7 | 17.8 |
| 44 | | | 17.6/43 | 17.6/43 | 16.6 | 16.7 | 16.5 | 16.5 |
| 46 | | | | | 16.1/45 | 16.1/45 | 15.2 | 15.2 |
| 48 | | | | | | | 14.7/47 | 14.7/47 |
| 50 | | | | | | | | |

| Radius (m) | S-boom length (m) | | | | | | | |
|------------|-------------------|---------|------|-------|------|---------|------|--------|
| | 65 | | 68 | | 71 | | 74 | |
| | FV-jib angle (°) | | | | | | | |
| | 14 | 20 | 14 | 20 | 14 | 20 | 14 | 20 |
| 13 | 55.2 | 54.1 | 49.2 | | 44.6 | | | |
| 14 | 55 | 53.9 | 48.7 | 47.9 | 42.4 | 41.6 | 38 | 37.2 |
| 16 | 53.9 | 53 | 47.6 | 46.8 | 41.6 | 41 | 37.1 | 36.5 |
| 18 | 50.9 | 50.3 | 46.8 | 45.9 | 40.5 | 39.9 | 36.4 | 35.8 |
| 20 | 48.1 | 47.6 | 45.7 | 45.1 | 39.6 | 39.1 | 35.3 | 35 |
| 22 | 42.7 | 42.7 | 41.6 | 42.7 | 38.8 | 38.3 | 34.3 | 33.9 |
| 24 | 38.3 | 38.3 | 37.2 | 37.7 | 37.2 | 37.2 | 33.5 | 33.1 |
| 26 | 35 | 35 | 33.9 | 33.9 | 33.4 | 33.4 | 32.7 | 32.4 |
| 28 | 31.7 | 31.7 | 30.6 | 30.6 | 30.1 | 30.1 | 29.5 | 29.5 |
| 30 | 28.4 | 28.4 | 28.2 | 28.2 | 27.9 | 27.9 | 27.3 | 27.3 |
| 32 | 26.3 | 26.8 | 25.7 | 26.3 | 25.2 | 25.2 | 24.6 | 24.6 |
| 34 | 24.1 | 24.5 | 23.5 | 23.5 | 23 | 23 | 22.4 | 22.4 |
| 36 | 22.4 | 22.4 | 21.9 | 21.9 | 21.3 | 21.3 | 20.8 | 20.8 |
| 38 | 20.6 | 20.7 | 19.7 | 19.7 | 19.1 | 19.7 | 18.6 | 19.1 |
| 40 | 18.9 | 19.1 | 18 | 18.6 | 18 | 18 | 17.5 | 17.5 |
| 42 | 17.5 | 17.5 | 17 | 17 | 16.4 | 16.4 | 15.9 | 15.9 |
| 44 | 16.2 | 16.2 | 15.3 | 15.6 | 15.3 | 15.3 | 14.8 | 14.8 |
| 46 | 15 | 15 | 14.2 | 14.2 | 13.7 | 13.9 | 13.4 | 13.7 |
| 48 | 13.9 | 13.9 | 13.4 | 13.4 | 13.1 | 13.1 | 12.6 | 12.6 |
| 50 | | 13.4/49 | 12.6 | 12.6 | 12 | 12 | 11.5 | 11.5 |
| 52 | | | | 12/51 | 11.2 | 11.2 | 10.7 | 10.9 |
| 54 | | | | | | 10.9/53 | 9.8 | 9.8 |
| 56 | | | | | | | | 9.3/55 |
| 58 | | | | | | | | |

| Radius (m) | S-boom length (m) | |
|------------|-------------------|---------|
| | 77 | |
| | FV-jib angle (°) | |
| | 14 | 20 |
| 14 | 33.6 | 32.5/15 |
| 16 | 32.9 | 32.4 |
| 18 | 32.3 | 31.7 |
| 20 | 31.3 | 30.9 |
| 22 | 30.6 | 30.2 |
| 24 | 29.7 | 29.4 |
| 26 | 28.7 | 28.4 |
| 28 | 26.9 | 26.7 |
| 30 | 26.3 | 26 |
| 32 | 24.1 | 24.1 |
| 34 | 21.9 | 21.9 |
| 36 | 19.7 | 20.2 |
| 38 | 18 | 18.6 |
| 40 | 17 | 17 |
| 42 | 15.3 | 15.3 |
| 44 | 14.2 | 14.2 |
| 46 | 13.1 | 13.1 |
| 48 | 12 | 12 |
| 50 | 10.9 | 10.9 |
| 52 | 10.4 | 10.4 |
| 54 | 9.3 | 9.3 |
| 56 | 8.5 | 8.5 |
| 58 | | |