

ZOOMLION TRUCK CRANE ZTC1100R



ZOOMLION

Zoomlion Heavy Industry Science & Technology Co.,Ltd.

Add: No.677, Lugu Road, Zoomlion Industrial Park, Changsha, Hunan, China, 410205

Copyright©2023 Zoomlion. All rights reserved. Reproduction and copying of any part of contents is not allowed for any purposes without Zoomlion's approval.



Product specifications are subject to change without notice and obligation. The photographs and/or drawing in this document are for illustrative purposes only. Please consult your local ZOOMLION dealer for more information.

website:en.zoomlion.com 2023.06.28

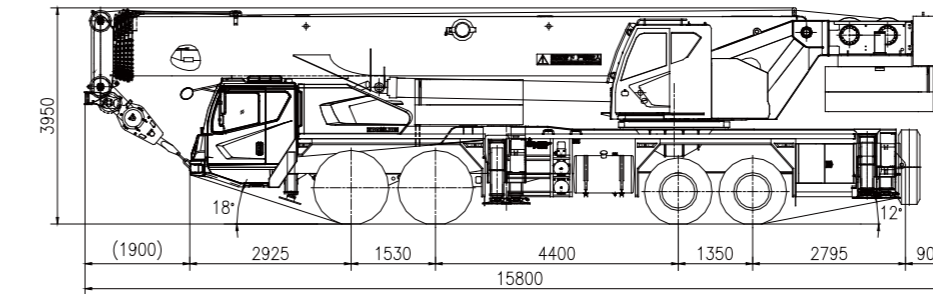
ZOOMLION

4.0
PRODUCTS

CONTENTS

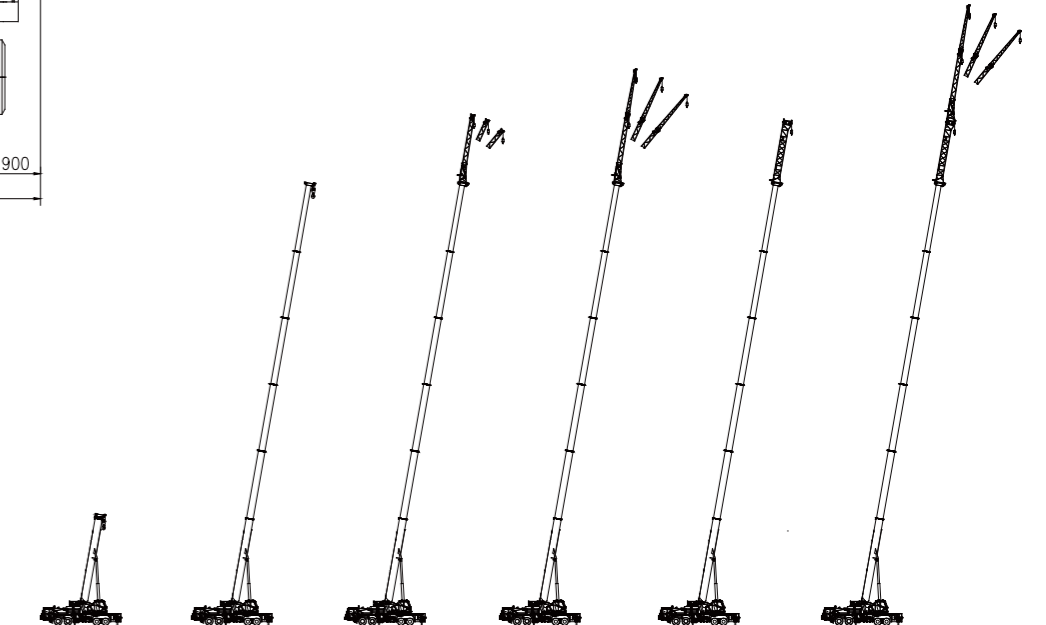
DIMENSIONS	2
BOOM / JIBS COMBINATION	2-3
CRANE AND COMPONENT WEIGHTS	3
LIFTING HEIGHT CURVE	3-4
LIFTING CAPACITY TABLES	4-7
TECHNICAL SPECIFICATIONS	7
MAIN TECHNICAL PARAMETERS.....	8

DIMENSIONS



BOOM / JIBS COMBINATION

Working Condition	Boom/Jib Length
Main boom	12.8-60.5m
Main boom + jib section1	Main boom(56.8m) + jib section1(10.4m)
Main boom + jib section2	Main boom(56.8m) + jib section2(17.5m)
Main boom + jib section1	Main boom(60.5m) + jib section1(10.4m)
Main boom + jib section2	Main boom(60.5m) + jib section2(17.5m)
Main boom + extension	Main boom(56.8m) + extension(9.5m)
Main boom + extension	Main boom(60.5m) + extension(9.5m)
Main boom + extension + jib section1	Main boom(56.8m) + extension(9.5m) + jib section1(10.4m)
Main boom + extension + jib section2	Main boom(56.8m) + extension(9.5m) + jib section2(17.5m)
Main boom + extension + jib section1	Main boom(60.5m) + extension(9.5m) + jib section1(10.4m)
Main boom + extension + jib section2	Main boom(60.5m) + extension(9.5m) + jib section2(17.5m)



CRANE AND COMPONENT WEIGHTS

Axle	1	2	3	4	Total weight
T	9,2	9,2	18,25	18,25	54,9

Hook Detailed Description

Model	Number of pulleys	Max. reeving	Weight Kg	Remarks
90	7	12	830	Straight shank with double hooks (optional)
80	6	12	685	Straight shank with single hook (optional)
70	6	12	689	Straight shank with single hook (optional)
60	6	12	662	Straight shank with double hooks (optional)
60	6	12	670	Straight shank with single hook (optional)
60	5	10	510	Straight shank with single hook (standard)
35	3	6	380	Straight shank with single hook (optional)
18	1	1	280	Straight shank with single hook (optional)
8	-	1	200	Standard

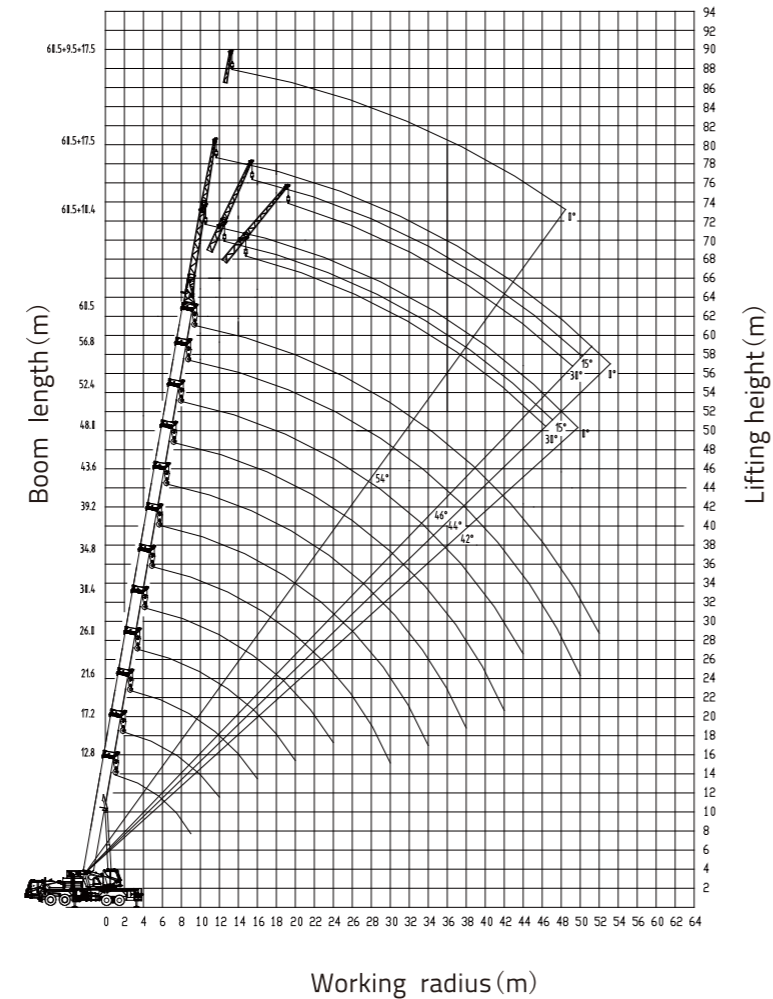
Working Speed

	km/h MAX.		
385/95R25(front) 325/95R24(rear)	89	42	Forward speeds: 12.74/9.44/6.67/4.83/ 3.53/2.64/1.95/1.38/1.0/0.73 Reverse speeds: 13.71/ 2.84

Drive	Operation Speed	Rope diameter/length	Max. single line pull
	140m/min	φ 20.0 mm/310 m	7.5t
	140m/min	φ 20.0 mm/220 m	7.5t
	0-1.6 r/min		
	65s/100s		
	650s/650s		

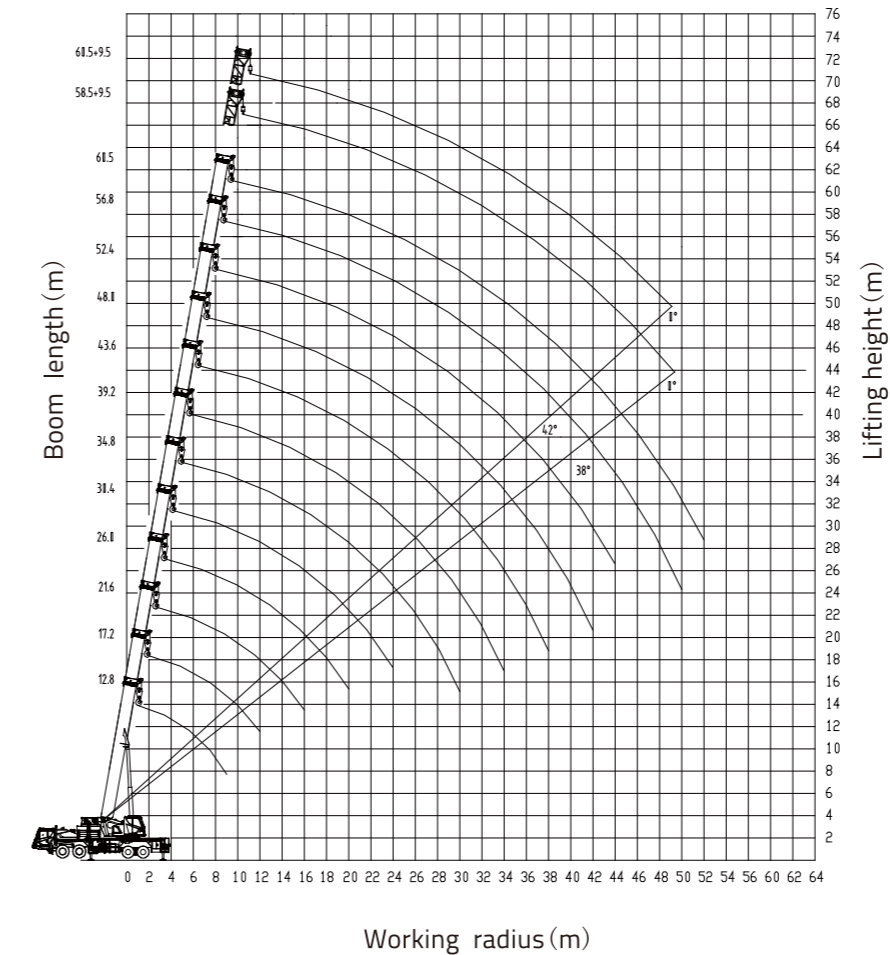
LIFTING HEIGHT CURVE

Lifting height chart with the boom, jib and extension installed



LIFTING HEIGHT CURVE

Lifting height chart with the boom and extension installed



LIFTING CAPACITY TABLES

Unit: ton

Outriggers fully extended to 8.4m, 23.5t counterweight, over side and rear working area										
Working Radius (m)	Boom length (m)									
	12.8*	17.2	17.2	17.2	17.2*	21.6	21.6	21.6	21.6	21.6*
2.5	110.0*									
3.0	100.0	39.5	75.0	80.0	80.0	27.0	40.0	68.0	68.0	68.0
3.5	80.0	37.0	71.0	75.0	75.0	26.0	39.0	67.5	67.5	67.5
4.0	78.0	35.5	68.0	73.0	73.0	25.0	37.0	67.0	67.0	67.0
4.5	74.0	32.0	63.0	70.0	70.0	23.5	36.0	66.0	66.0	66.0
5.0	70.0	30.0	60.0	67.0	67.0	22.5	34.0	63.5	63.5	63.5
6.0	60.5	28.0	53.0	59.0	59.0	20.5	31.5	56.0	56.0	56.0
7.0	48.5	26.0	47.0	49.5	49.5	18.5	30.0	49.0	49.0	49.0
8.0	42.0	24.5	43.0	43.5	43.5	17.0	28.5	43.5	43.5	43.5
9.0	36.5	23.0	39.0	37.0	37.0	15.5	27.0	38.0	37.0	37.0
10.0		22.0	35.6	33.0	33.0	14.5	25.0	34.0	33.0	33.0
11.0		20.5	31.5	30.0	30.0	13.7	24.0	31.0	30.0	29.5
12.0		19.5	28.5	28.0	27.0	12.8	23.0	28.5	28.0	27.0
14.0						11.4	19.8	23.0	22.0	20.5
16.0						10.3	18.5	19.0	18.0	16.5
Reeving	12									
Hook	60T									
Telescoping mode	I	1	1	1	1	1	1	1	1	2
	II	1	1	1	1	2	1	1	1	2
	III	1	1	1	2	1	1	1	2	1
	IV	1	1	2	1	1	1	2	2	1
	V	1	2	1	1	1	3	2	1	1

LIFTING CAPACITY TABLES

Unit: ton

Outriggers fully extended to 8.4m, 23.5t counterweight, over side and rear working area											
Working Radius (m)	Boom length (m)										
	26.0	26.0	26.0	26.0	26.0*	30.4	30.4	30.4	30.4	30.4*	
4.0	27.0	30.0	40.0	61.0	61.0						
4.5	26.0	28.5	39.0	60.0	60.0						
5.0	25.0	27.0	38.0	58.0	58.0	23.5	29.0	36.0	40.0	54.0	
6.0	22.5	24.5	35.0	53.0	53.0	21.5	27.0	33.0	38.0	50.0	
7.0	20.5	22.0	33.0	48.0	48.0	19.5	24.5	30.0	36.0	47.0	
8.0	19.0	20.0	31.0	43.0	43.0	18.0	22.8	27.5	34.0	43.0	
9.0	17.5	18.5	29.0	38.0	38.0	16.5	21.0	25.0	32.0	39.0	
10.0	16.6	17.0	28.0	35.0	33.5	15.2	19.5	23.3	31.0	34.0	
11.0	15.6	16.0	26.5	31.5	30.0	14.2	18.3	21.7	30.0	30.5	
12.0	14.7	15.0	25.5	28.5	27.0	13.2	17.1	20.2	28.5	27.5	
14.0	13.2	13.2	23.5	22.5	21.0	11.5	15.1	17.8	24.3	22.2	
16.0	12.0	11.8	19.8	18.6	17.3	10.2	13.5	15.8	19.6	18.0	
18.0	10.8	10.6	16.4	15.3	14.0	9.2	12.3	14.2	16.3	14.8	
20.0	9.8	9.6	13.8	12.7	11.4	8.4	11.2	13.0	13.6	12.2	
22.0						7.6	10.3	11.8	11.6	10.2	
24.0						7.0	9.5	10.2	10.0	8.6	
Reeving	10					9					
Hook	60T										
Telescoping mode	I	1	1	1	1	2	1	1	1	1	2
	II	1	1	1	2	2	1	1	1	2	2
	III	1	1	2	2	2	1	2	3	2	2
	IV	2	3	2	2	1	3	3	2	2	2
	V	3	2	2	1	1	3	2	2	2	1

Unit: ton

Outriggers fully extended to 8.4m, 23.5t counterweight, over side and rear working area											
Working Radius (m)	Boom length (m)										
	34.8	34.8	34.8	34.8	34.8*	39.2	39.2	39.2	39.2	39.2*	
6.0	23.0	28.0	32.0	40.0	41.0						
7.0	21.0	26.5	29.0	36.5	39.0	22.0	27.0	32.0	35.0	35.0	
8.0	19.5	24.0	27.0	33.0	37.0	20.5	25.0	29.5	34.0	34.0	
9.0	18.0	22.5	25.0	30.5	35.0	19.0	23.5	27.0	31.0	32.0	
10.0	16.8	20.8	23.0	28.5	34.0	17.5	22.0	25.5	29.0	30.0	
11.0	15.7	19.0	21.8	26.5	31.0	16.4	20.5	23.5	27.0	28.0	
12.0	14.6	18.0	20.5	24.9	28.0	15.4	19.0	22.0	25.5	26.5	
14.0	13.0	15.8	18.0	21.8	23.0	13.6	16.7	19.3	22.3	23.0	
16.0	11.5	14.0	16.0	20.2	19.0	12.1	14.9	17.1	18.8	18.5	
18.0	10.5	12.5	14.5	16.6	15.6	11.0	13.4	15.3	15.5	15.1	
20.0	9.5	11.3	13.0	13.5	13.0	10.0	12.1	13.5	12.9	12.5	
22.0	8.8	10.3	11.6	11.4	11.0	9.2	11.0	11.5	10.9	10.5	
24.0	8.1	9.5	10.0	9.8	9.4	8.5	10.1	10.0	9.3	8.9	
26.0	7.5	8.8	8.7	8.5	8.1	7.8	9.2	8.6	8.0	7.6	
28.0	7.0	8.1	7.6	7.4	7.0	7.3	8.1	7.5	6.9	6.5	
30.0	6.5	7.2	6.8	6.4	6.0	6.8	7.1	6.6	6.0	5.6	
32.0						6.3	6.2	5.7	5.1	4.7	
34.0						5.8	5.5	5.0	4.4	4.0	
Reeving	7					6					
Hook	60T										
Telescoping mode	I	1	1	1	1	2	1	1	2	3	
	II	1	1	2	3	2	1	2	3	2	
	III	2	3	3	2	2	3	3	3	2	
	IV	3	3	2	2	2	3	3	2	2	
	V	3	2	2	2	2	3	2	2	2	

Unit: ton

Outriggers fully extended to 8.4m, 23.5t counterweight, over side and rear working area												
Working Radius (m)	Boom length (m)											
	43.6	43.6	43.6	43.6	48.0	48.0	48.0*	52.4	52.4*	56.8*	60.5*	
9.0	20.0	24.0	27.0	28.0								
10.0	19.0	22.5	26.0	26.5	19.0	22.5	23.5					
11.0	18.0	21.0	24.5	25.0	18.5	21.5	22.5					
12.0	16.8	19.8	23.0	23.5	17.5	20.5	21.0	18.0	19.5			
14.0	15.0	17.3	20.0	20.5	15.6	18.5	19.0	16.0	17.5	16.2	13.2	
16.0	13.4	15.3	17.8	18.5	14.0	16.5	17.0	14.8	16.0	14.8	13.1	
18.0	12.0	13.8	15.7	15.1	12.8	14.8	15.3	13.5	14.7	13.5	12.7	
20.0	11.0	12.5	13.1	12.5	11.6	13.3	12.8	12.4	13.0	12.2	11.7	
22.0	10.2	11.3	11.1	10.5	10.5	11.5	10.8	11.6	11.1	11.2	10.5	
24.0	9.3	10.3	9.5	8.9	9.6	9.8	9.2	10.2	9.5	10.0	9.5	
26.0	8.5	8.9	8.2	7.6	9.3	8.5	7.8	8.9	8.2	8.9	8.7	
28.0	8.0	7.8	7.1	6.5	8.4	7.4	6.7	7.8	7.1	7.9	7.7	
30.0	7.4	6.9	6.2	5.6	7.4	6.6	5.8	7.1	6.1	6.9	6.9	
32.0	6.6	6.0	5.3	4.7	6.6	5.6	4.9	6.4	5.3	6.0	6.0	
34.0	5.9	5.3	4.6	4.0	5.8	4.9	4.2	5.7	4.6	5.3	5.3	
36.0	5.2	4.7	4.0	3.4	5.2	4.3	3.6	5.0	3.9	4.6	4.6	
38.0	4.7	4.2	3.4	2.8	4.6	3.7	3.0	4.4	3.4	4.0	4.0	
40.0					4.1	3.2	2.5	3.9	2.9	3.5	3.6	
42.0					3.5	2.7	2.2	3.5	2.4	3.0	3.1	
44.0								3.0	2.0	2.6	2.7	
46.0										2.2	2.3	
48.0										1.9	2.0	
50.0										1.5	1.6	
52.0											1.3	
Reeving	5					4				3		
Hook	60T											
Telescoping mode	I	1	1	2	3	1	2	3	2	3	4	
	II	2	3	3	3	3	3	3	3	3	4	
	III	3	3	3	2	3	3	3	3	3	4	
	IV	3	3	2	2	3	3	2	3	3	4	
	V	3	2	2	2	3	2	2	3	2	4	

Unit: ton

Boom angle (°)	Boom + jib (m)											
	Outriggers fully extended, over side and rear working area, 23.5 t counterweight											
	56.8+10.4			56.8+17.5			60.5+10.4			60.5+17.5		
	0°	15°	30°	0°	15°	30°	0°	15°	30°	0°	15°	30°
80	6.5	5.5	4.5	3.5	2.5	1.8	6.0	5.0	4.0	3.5	2.2	2.0
78	6.5	5.5	4.5	3.2	2.3	1.8	5.8	5.0	4.0	3.2	2.2	1.8
76	6.3	5.3	4.5	3.0	2.2	1.7	5.6	4.8	4.0	3.0	2.1	1.7
74	6.2	5.2	4.5	2.8	2.0	1.7	5.4	4.6	4.0	2.8	2.0	1.7
72	6.1	5.1	4.5	2.6	1.9	1.7	5.2	4.4	4.0	2.6	1.9	1.6
70	6.0	5.0	4.4	2.4	1.9	1.6	5.0	4.2	4.0	2.4	1.8	1.6
68	5.9	4.9	4.3	2.3	1.8	1.6	4.8	4.0	3.8	2.2	1.8	1.6
66	5.6	4.8	4.2	2.2	1.8	1.6	4.6	3.8	3.6	2.0	1.7	1.5
64	5.1	4.7	4.1	2.1	1.7	1.5	4.5	3.6	3.4	1.9	1.7	1.5
62	4.6	4.4	4.0	2.0	1.7	1.5	4.0	3.5	3.2	1.8	1.6	1.4
60	4.1	3.9	3.7	1.9	1.6	1.5	3.5	3.3	3.1	1.7	1.6	1.4
58	3.7	3.5	3.4	1.8	1.6	1.4	3.1	2.9	2.8	1.7	1.5	1.4
56	3.3	3.1	3.0	1.8	1.5	1.4	2.7	2.6	2.5	1.6	1.4	1.3
54	2.9	2.8	2.7	1.7	1.5	1.4	2.4	2.3	2.2	1.6	1.4	1.3
52	2.6	2.5	2.4	1.7	1.4	1.3	2.1	2.0	1.9	1.5	1.4	1.3
50	2.3	2.2	2.1	1.6	1.4	1.3	1.8	1.7	1.6	1.5	1.3	1.3
48	2.0	1.9	1.8	1.5	1.4	1.3	1.6	1.5	1.4	1.3	1.2	1.2
46	1.8	1.7	1.6	1.5	1.3	1.2	1.4	1.3	1.3	1.2	1.1	1.1
44	1.6	1.5	1.4	1.4	1.3	1.2	1.2	1.1	1.1	1.0	0.9	0.9
42	1.4	1.3	1.2	1.2	1.1	1.1	1.0	1.0	1.0			
40	1.2	1.1	1.0	1.1	1.0	1.0						
38	1.0	1.0										
Reeving	1											
Hook	8T											

LIFTING CAPACITY TABLES

Unit: ton

Boom angle (°)	Boom+extension (m)	Boom + extension + jib (m)				
	Outriggers fully extended, over side and rear working area, 23,5 t counterweight					
	56,8+9,5	60,5+9,5	56,8+9,5+10,4	56,8+9,5+17,5	60,5+9,5+10,4	60,5+9,5+17,5
	0°	0°	0°	0°	0°	0°
80	8.5	6.5	4.5	2.7	4.0	2.5
78	8.0	6.4	4.5	2.5	4.0	2.5
76	7.5	6.2	4.5	2.4	4.0	2.3
74	7.0	5.8	4.2	2.2	3.8	2.1
72	6.6	5.4	3.9	2.1	3.6	2.0
70	6.2	5.1	3.6	2.0	3.2	1.9
68	5.8	5.0	3.3	1.9	3.0	1.9
66	5.4	4.9	3.0	1.8	2.9	1.8
64	5.1	4.8	2.9	1.7	2.8	1.8
62	4.8	4.2	2.8	1.7	2.6	1.8
60	4.4	3.7	2.7	1.6	2.2	1.7
58	4.0	3.3	2.2	1.6	1.9	1.6
56	3.5	2.9	2.1	1.5	1.6	1.3
54	3.1	2.5	1.8	1.5	1.3	1.1
52	2.8	2.2	1.5	1.3	1.1	
50	2.5	1.9	1.3	1.0		
48	2.2	1.7	1.0			
46	2.0	1.4				
44	1.7	1.2				
42	1.5	1.0				
40	1.3					
38	1.1					
Reeving	2	1		1		
Hook	18T			8T		

TECHNICAL SPECIFICATIONS

Crane Superstructure

Main boom	One basic boom and 5 telescopic sections welded from high-tensile steel. Main boom length:12.8-60.5m.
Jib	2 section lattice jibs(10.4m,17.5m), offset: 0°,15°,30°.A 9.5 m extension is optional. It can be installed with the boom only or with the boom and jib all together.
Rooster sheave	It is inserted at the boom head of telescopic boom section 5. This option is set up for rapid hoists over the boom head to improve work efficiency when the loads are light.
Slewing platform	The slewing platform is of a single ribbed plate structure and made from high-strength steel plate.
Slewing gear	Dual hydraulic fixed displacement motors, planetary reducer and slewing bearing. Free slewing function.
Derricking mechanism	The front-mounted derricking mechanism installed with a derricking cylinder and a safety balance valve provides the boom with smooth derricking movements from -1° to 80°.
Slewing mechanism	The slewing mechanism is equipped with double slewing gears.
Hoist mechanism	Main hoist mechanism and auxiliary hoist mechanism are driven by a hydraulic variable motor with built-in planetary gear reducer to lift or lower the hook. A brake is fitted between the motor and reducer.
Hydraulic system	Electronic-hydraulic proportional controlled with a computer system. Hydraulic tank :1000L
Electrical system	Double-wired system, 24 Volt DC.
Operator's cab	The cab with spacious room and man-machine friendly layout offers a comfortable operating experience. AC and heater.
Safety devices	Automatic load moment limiter, warning light, digital LCD, limit switch, relief valve, etc.
Counterweight	23.5T counterweight.
Outrigger	H-type outriggers are in box-shaped structure and welded from low-alloy and high-strength steel plate. The 5th outrigger is installed beneath the driver's cab. The crane can realize full range slewing operation with the 5th outrigger is set up.

Crane Carrier

Chassis frame	Made by ZOOMLION with high-tensile steel plate.
Engine	WeichaiWP9H350E62 diesel engine, output 257KW, max. outputtorque 1700N*m. Fuel tank: 450L
Limits for exhaust pollutants and smoke	BSIV(CEV/TREM)

MAIN TECHNICAL PARAMETERS

Item		Value	Remarks	
Working performance	Max. rated lifting capacity	kg	110000	
	Max. load moment of basic boom	kN.m	3557	
	Max. load moment of max. length boom	kN.m	2293	
	Max. lifting height of basic boom	m	14.3	
	Max. lifting height of boom	m	61.3	
	Max. lifting height of jib	m	79.0	
Working speeds	Max. lifting height of jib With the optional 9.5m extension	m	88.4	
	Max. hoist rope speed (Main winch)	m/min	140	Drum 4 th layer
	Max. hoist rope speed (Auxiliary winch)	m/min	140	Drum 4 th layer
	Boom derricking up time	s	65	
	Boom telescoping out time	s	650	
	Slewing speed	r/min	0 - 1.6	
	Max. driving speed	km/h	89	
	Max. gradeability	%	42	
	Min. turning diameter	m	24	
	Min. ground clearance	mm	325	
Mass	Oil consumption per hundred kilometer	L	42	
	Deadweight in driving condition	kg	54900	
	Complete vehicle kerb mass	kg	54770	
	Front axle load	kg	17000	
Dimension	Rear axle load	kg	37900	
	Overall dimensions (L × W × H)	mm	15800×3000×3950	
	Outrigger spread (L)	m	6.71	
	Outrigger spread (W)	m	Fully extended: 8.4 m	
	Tail slewing radius	mm	5100	
	Boom length	m	12.8-60.5	
	Boom angle	°	-1-80	
	Jib length	m	10.4, 17.5	
	Jib angle	°	0, 15, 30	
	Extension length	m	9.5	Optional
Extension angle	°	0		