

ZOOMLION TRUCK CRANE ZTC800V532-1



ZOOMLION

Zoomlion Heavy Industry Science & Technology Co.,Ltd.

Add: No.677, Lugu Road, Zoomlion Industrial Park, Changsha, Hunan, China, 410205

Copyright©2023 Zoomlion. All rights reserved. Reproduction and copying of any part of contents is not allowed for any purposes without Zoomlion's approval.



Product specifications are subject to change without notice and obligation. The photographs and/or drawing in this document are for illustrative purposes only. Please consult your local ZOOMLION dealer for more information.
website:en.zoomlion.com 2023.10.07

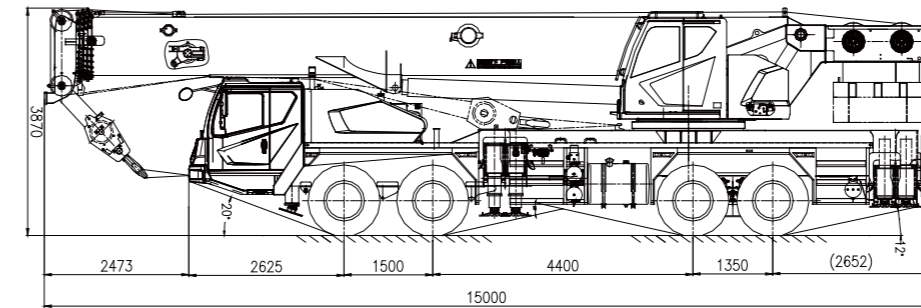
ZOOMLION

4.0
PRODUCTS

CONTENTS

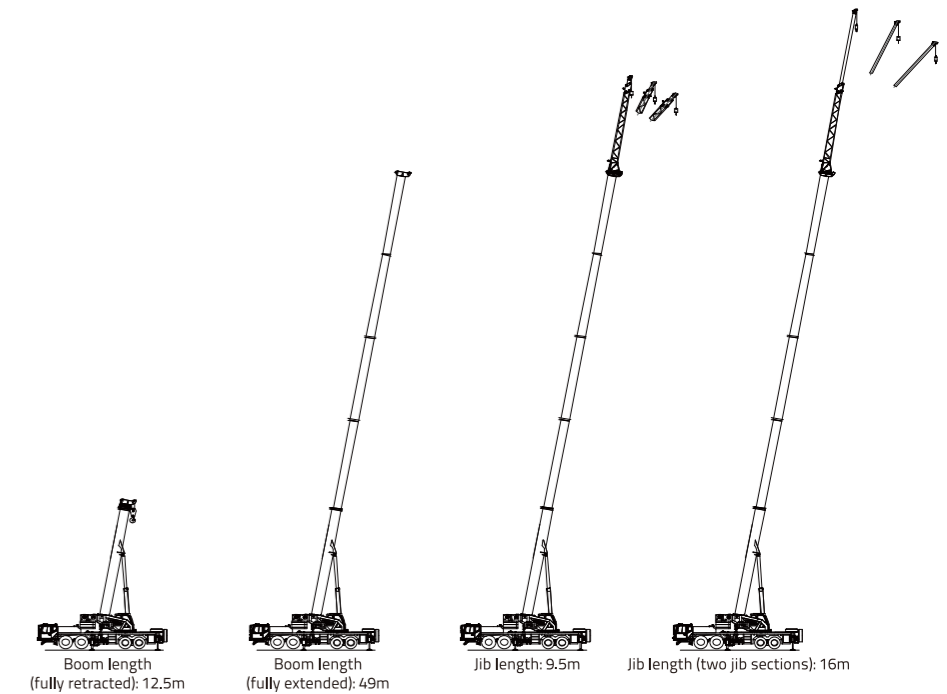
CRANE DIMENSION	2
BOOM COMBINATION	2
CRANE AND COMPONENT WEIGHTS	3
LIFTING HEIGHT CURVE	3
LIFTING CAPACITY TABLES.....	4-5
TECHNICAL SPECIFICATIONS	6
MAIN TECHNICAL PARAMETERS	7

DIMENSIONS



BOOM/JIB COMBINATION

Working Condition	Boom/Jib Length
Boom	12.5-49m
Boom +jibsection1	Boom 49m +(jib section 1)9.5m
Boom +jibsection 1 + jib section 2	Boom 49m +(jib section 1 + jib section 2)16m



CRANE AND COMPONENT WEIGHTS




Axle	1	2	3	4	Total weight
T	9.5	9.5	13	13	45






Note: without auxiliary counterweight, moveable counterweight

Hook Detailed Description

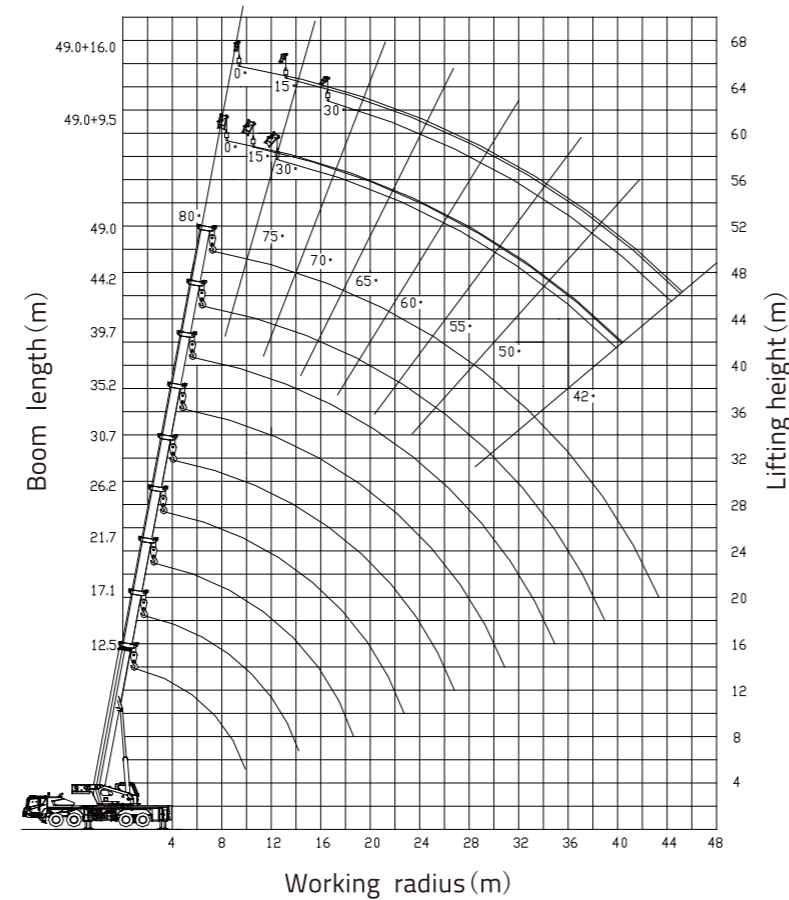
Hook Load T	No. of Sheaves	Max. reeving	Weight Kg	Remarks
60t	6	12	550	standard
8t	-	1	125	standard
35t	3	6	380	optional

Working Speed

	km/h MAX.		
325/95R24	89	48	Forward Gears: 12.74/9.43/6.67/4.83 /3.53/ 2.64/1.95/1.38/1.00/ 0.73 Reverse Gear: 13.73/2.84

Drive	Operation Speed	Rope Diameter/length	Max. Single Line Pull
	130m/min	Φ 20mm/230m	6500Kg
	130m/min	Φ 20mm/140m	6500Kg
	0~1.8r/min		
	55/115		
	110/130		

LIFTING HEIGHT CURVE



LIFTING CAPACITY TABLES

Rated capacity chart(with boom only)

Unit: t

Working radius (m)	Main boom (m)								
	Telescopic cylinder I and outriggers completely extended, over sides and rear, with 16t counterweight								
	12,5	17,1	21,7	26,2	30,7	35,2	39,7	44,2	49,0
3.0	80.0 *	65.0							
3.5	73.0 *	63.0	42.0						
4.0	66.0 *	61.0	42.0						
4.5	60.0 *	60.5	42.0	32.0					
5.0	56.0	54.0	42.0	32.0					
5.5	52.0	50.5	40.0	32.0	29.0				
6.0	46.0	45.5	39.0	32.0	29.0				
7.0	41.0	40.0	34.0	32.0	29.0	26.0			
8.0	35.5	35.0	29.5	29.0	27.0	26.0	21.0		
9.0	28.5	27.5	26.0	26.0	25.0	22.5	19.7	16.5	
10.0		22.5	22.5	22.5	23.0	20.8	18.2	16.0	12.4
11.0		20.5	20.2	21.0	21.0	19.0	17.0	15.0	12.2
12.0		17.5	17.2	18.2	19.0	17.6	15.8	14.2	12.0
14.0			12.7	13.7	14.3	14.7	13.5	12.5	11.5
16.0			9.7	10.5	11.1	11.6	12.0	11.0	10.4
18.0			7.4	8.2	8.8	9.3	9.7	9.7	9.4
20.0				6.5	7.1	7.6	8.0	8.2	8.3
22.0				5.1	5.7	6.2	6.6	6.9	7.2
24.0					4.6	5.1	5.4	5.7	6.0
26.0					3.7	4.2	4.5	4.8	5.1
28.0						3.4	3.7	4.0	4.3
30.0						2.7	3.0	3.3	3.6
32.0							2.5	2.8	3.0
34.0							2.0	2.3	2.5
36.0								1.9	2.1
38.0								1.5	1.8
40.0									1.4
42.0									1.1
44.0									
I	0	4.6	9.2	9.2	9.2	9.2	9.2	9.2	9.2
II	0	0	0	4.5	9.0	13.5	18.0	22.5	27.3
Reeving	12	10	8	6	5	4	4	3	3
Hook									60t

Rated capacity chart(with boom only)

Unit: t

Working radius (m)	Main boom (m)							
	Telescopic cylinder I intermediately extended and outriggers completely extended, over sides and rear, with 16 t fixed counterweight							
	12,5	17,1	21,6	26,1	30,6	35,1	39,6	44,4
3.0	80.0 *	65.0	32.0					
3.5	73.0*	63.0	32.0					
4.0	66.0*	61.0	32.0	30.0				
4.5	60.0 *	60.5	32.0	30.0				
5.0	56.0	54.0	32.0	30.0	27.0			
5.5	52.0	50.5	32.0	30.0	27.0			
6.0	46.0	45.5	32.0	30.0	27.0			
7.0	41.0	40.0	32.0	30.0	27.0	22.0		
8.0	35.5	35.0	30.0	30.0	27.0	21.0	16.5	
9.0	28.5	27.5	27.0	27.0	27.0	20.0	16.5	13.5
10.0		22.5	23.5	24.0	24.0	19.0	16.0	13.0
11.0		20.5	21.5	22.0	22.0	17.5	15.0	12.5
12.0		17.5	18.5	19.4	19.9	16.5	14.0	12.0
14.0			14.0	14.8	15.3	14.6	12.3	11.0
16.0			10.9	11.5	12.0	12.4	11.0	9.7
18.0				9.3	9.8	10.0	9.7	8.7
20.0				7.5	8.0	8.3	8.6	7.8
22.0				6.1	6.6	6.9	7.2	7.0
24.0					5.5	5.8	6.1	6.3
26.0					4.5	4.8	5.1	5.3
28.0						4.1	4.4	4.6
30.0						3.4	3.7	3.9
32.0							3.1	3.2
34.0							2.6	2.8
36.0								2.4
38.0								2.0
40.0I								
II	0	4.6	4.6	4.6	4.6	4.6	4.6	4.6
Reeving	0	0	4.5	9.0	13.5	18.0	22.5	27.3
Hook	12	10	6	6	5	4	3	3
								60t

LIFTING CAPACITY TABLES

Rated capacity chart(with boom only)

Unit: t

Working radius (m)	Main boom (m)						
	Telescopic cylinder I completely retracted and outriggers completely extended, over sides and rear, with 16 t counterweight						
	12,5	17,0	21,5	26,0	30,5	35,0	39,8
3,0	80,0 *	32,0	30,0				
3,5	76,0 *	32,0	30,0				
4,0	68,5 *	32,0	30,0	27,0			
4,5	65,5 *	32,0	30,0	27,0			
5,0	59,0	32,0	30,0	27,0	22,0		
5,5	55,0	32,0	30,0	27,0	22,0		
6,0	46,0	32,0	30,0	27,0	21,0		
7,0	42,0	32,0	30,0	27,0	20,0	16,5	
8,0	35,5	31,0	30,0	27,0	19,0	16,5	14,0
9,0	28,5	27,0	27,0	26,0	18,0	16,0	13,5
10,0		24,0	24,0	24,0	16,5	15,0	13,0
11,0		22,0	22,0	22,0	15,2	14,0	12,5
12,0		19,0	19,5	20,0	14,2	13,0	11,5
14,0			15,5	15,8	12,5	11,2	10,0
16,0			12,2	12,7	11,0	10,0	9,0
18,0				10,3	9,8	9,0	8,0
20,0				8,6	8,8	8,0	7,2
22,0					7,4	7,2	6,5
24,0					6,3	6,5	5,9
26,0					5,3	5,6	5,4
28,0						4,8	5,0
30,0						4,1	4,3
32,0							3,7
34,0							3,2
I	0	0	0	0	0	0	0
II	0	4,5	9,0	13,5	18,0	22,5	27,3
Reeving	12	6	6	5	4	3	3
Hook	60t						

Rated capacity chart with jib

Unit: t

Main boom angle (°)	Main boom (m) + Jib (m) Outriggers completely extended 16t counterweight					
	49,0 + 9,5			49,0 + 16,0		
	0°	15°	30°	0°	15°	30°
80	5,0	3,3	2,5	3,0	2,0	1,5
78	5,0	3,3	2,5	3,0	2,0	1,45
76	4,8	3,2	2,5	2,9	1,9	1,4
74	4,5	3,1	2,5	2,7	1,8	1,35
72	4,2	3,0	2,5	2,5	1,7	1,3
70	3,9	2,9	2,4	2,3	1,65	1,25
68	3,6	2,8	2,3	2,1	1,6	1,25
66	3,4	2,7	2,2	2,0	1,55	1,2
64	3,2	2,6	2,1	1,9	1,5	1,2
62	3,0	2,5	2,05	1,8	1,45	1,15
60	2,9	2,4	2,0	1,7	1,4	1,15
58	2,8	2,3	1,95	1,6	1,35	1,1
56	2,5	2,2	1,9	1,55	1,3	1,1
54	2,2	2,1	1,85	1,5	1,25	1,05
52	1,9	1,8	1,7	1,45	1,2	1,05
50	1,6	1,55	1,5	1,35	1,15	1,0
48	1,4	1,35	1,3	1,2	1,1	0,95
46	1,2	1,15	1,1	1,05	0,95	0,9
44	1,0	0,95	0,9	0,9	0,85	0,8
42	0,85	0,8	0,75	0,75	0,7	0,65
40						
Reeving	1					
Hook	8t					

This crane is provided with various rated capacity charts. The operator should select proper rated lifting load referring to resp. rated capacity charts according to actual working conditions

The values in column 'I' refer to the extendable length of telescopic cylinder I; The values in column 'II' refer to 3 times extendable length of telescopic cylinder II

The working condition marked with asterisk (*) indicates over sides and rear working area

a) For 60t< rated capacity ≤70t, a 70 t hook should be used

b) For 70t< rated capacity ≤80t, an 80 t hook should be used; the reeving is 13 and an additional device should be installed

TECHNICAL SPECIFICATIONS

Crane Superstructure

Main boom	The box-shaped boom consists of 5 U-type boom sections made of low-alloy high-strength steel plate
Jib	2 section lattice jibs(9.5m,16m), offset: 0°,15°,30°
Winch	Main winch and auxiliary winch with variable displacement piston motors and planetary reducers
Slewing mechanism	Hydraulic motor, planetary gear reducer,Slewing cushion valve and normally-closed
BrakeElectrical system	Two-wire system, 24 Volt DC
Operator's cab	The cab with spacious room and man-machine friendly layout offers a comfortable operating experience. AC and heater
Safety devices	Automatic load moment limiter,warning light, limit switch, relief valve,hoisting limit switch etc
Counterweight	16T counterweight

Hydraulic system The open-type hydraulic system adopts advanced pilot-operated proportional joysticks and hydraulic proportional control system.Hrdraulic tank: 1030L

Derricking mechanism 1 front-mounted hydraulic cylinder with balance valve provides the boom with smooth derricking movements from -1° to 80°

Crane Carrier

Outrigger	H-type outriggers
Engine	YCK10380-60, Rated power: 280KW, max. torque 1800N*m.Fuel tank400L
Driver's cab	Modern and luxury driver's cab with man-machine friendly layout offers a comfortable operating experience. AC and heater

MAIN TECHNICAL PARAMETERS

Item		Value	Remark	
Working performance	Max. rated lifting capacity	kg	80000	
	Max. load moment of basic boom	kN.m	2813	
	Max. load moment of max. length main boom	kN.m	1658	
	Max. lifting height of basic boom	m	13.9	
	Max. lifting height of main boom	m	49.8	
	Max. lifting height of jib	m	66.1	These parameters do not include deflection of boom and jib
Working speeds	Max. hoist rope speed (main winch)	m/min	130	At 4th layer
	Max. hoist rope speed (auxiliary winch)	m/min	130	At 4th layer
	Boom derricking up time	s	55	
	Boom telescoping out time	s	110	
	Slewing speed	r/min	0~1.8	
Driving	Max. working altitude	m	2000	
	Max. driving speed	km/h	89	
	Max. gradeability	%	48	
	Min. turning diameter	m	24	
	Min. ground clearance	mm	304	
	Oil consumption per hundred kilometers	L	39	
Mess	Deadweight in driving condition	kg	45000	Without auxiliary counterweight, moveable counterweight
	Complete vehicle kerb mass	kg	44870	
	Front axle load	kg	19000	
	Rear axle load	kg	26000	
Dimensions	Overall dimensions (L×W×H)	mm	15000×2800×3870	
	Longitudinal distance between outriggers	m	6.6	
	Transversal distance between outriggers	m	Completely extended: 8.0 Intermediately extended: 5.26	
	Tail slewing Radius	mm	4300	
	Main boom length	m	12.5~49	
	Boom angle	°	-1~80	
	Jib length	m	9.5、16.0	
	Offset	°	0、15、30	